



BISON Packages for HAAS Lathes



2023



BISON

HAAS TL-1 TL-2

Product Offerings

A2-5 A2-6 Spindles



3-Jaw Scroll Chuck Packages

8" Standard Package



BISON Item: 7-812-0800
 A2-5 Mount: 7-873-085F
 A2-6 Mount: 7-873-086F
 Description: 3-Jaw Scroll Chuck 3275-8"
 Chuck Body: Semi-Steel
 Jaws: 2 Piece Jaws (Master+Top Jaws)
 Price: Call For Pricing

10" Standard Package



BISON Item: 7-812-1000
 A2-5 Mount: 7-873-105F
 A2-6 Mount: 7-873-106F
 Description: 3-Jaw Scroll Chuck 3275-10"
 Chuck Body: Semi-Steel
 Jaws: 2 Piece Jaws (Master+Top Jaws)
 Price: Call For Pricing

8" Premium Package



BISON Item: 7-866-0800
 A2-5 Mount: 7-874-085
 A2-6 Mount: 7-874-086
 Description: 3-Jaw Scroll Chuck 3565-8"
 Chuck Body: Forged-Steel
 Jaws: 2 Piece Jaws (Master+Top Jaws)
 Price: Call For Pricing

10" Premium Package



BISON Item: 7-866-1000
 A2-5 Mount: 7-874-105
 A2-6 Mount: 7-874-106
 Description: 3-Jaw Scroll Chuck 3565-10"
 Chuck Body: Forged-Steel
 Jaws: 2 Piece Jaws (Master+Top Jaws)
 Price: Call For Pricing

4-Jaw Independent Chuck Options

8" Independent



A2-5 Mount: 7-851-0815
 A2-6 Mount: 7-851-0816
 Description: 4-Jaw Independent Chuck
 4314-8" Direct Mount
 Chuck Body: Semi-Steel
 Jaws: Solid Jaws
 Price: Call For Pricing

10" Independent



A2-5 Mount: 7-851-1025
 A2-6 Mount: 7-851-1016
 Description: 4-Jaw Independent Chuck
 4314-10" Direct Mount
 Chuck Body: Semi-Steel
 Jaws: Solid Jaws
 Price: Call For Pricing

Collet Chuck Options

5C Collet Chuck



BISON Item: 7-862-0505
 A2-5 Mount: 7-874-056
 A2-6 Mount: 7-874-056
 Description: 5C Set-Tru Collet Chuck
 3960-5"-5C
 Chuck Body: Forged-Steel
 Price: Call For Pricing

16C Collet Chuck



BISON Item: 7-862-0605
 A2-5 Mount: 7-874-065
 A2-6 Mount: 7-874-066
 Description: 16C Set-Tru Collet Chuck
 3965-6"-16C
 Chuck Body: Forged-Steel
 Price: Call For Pricing

Live Center Options

Standard Option



BISON Item: 7-565-004
 Description: MT4 Live Center
 Precision: 0.0003
 Max Weight: 2,200 lbs
 RPM: 3,000
 Price: Call For Pricing

Precision Option



BISON Item: 7-565-104
 Description: Super Precision MT4 Live Center
 Precision: 0.0001
 Max Weight: 2,200 lbs
 RPM: 3,000
 Price: Call For Pricing

Alternative Options Available



BISON

HAAS ST10/ST10Y

Product Offerings

A2-5 Spindle



Manual Chuck Packages

6" 3-Jaw Set-Tru Chuck



BISON Item: 7-866-0600
 A2-5 Mount: 7-874-065
 Description: 3-Jaw Scroll Chuck 3565-6"
 Chuck Body: Forged-Steel
 Jaws: 2 Piece Jaws (Master+Top Jaws)
 Price: Call For Pricing

6" 4-Jaw Independent Chuck



BISON Item: 7-850-0600
 A2-5 Mount: 7-873-065 (Semi-Finished)
 Description: 4-Jaw Independent Chuck 4306-6"
 Chuck Body: Forged-Steel
 Jaws: Solid Jaws
 Price: Call For Pricing

Power Chuck Packages

6" 3-Jaw Power Chuck



BISON Item: 7-781-0600
 A2-5 Mount: 7-789-5065
 Description: 3-Jaw Power Chuck 2405-160-45K
 Chuck Body: Forged-Steel
 Jaws: 2 Piece Jaws (Master+Soft Top Jaws)
 Price: Call For Pricing

6" 4-Jaw Power Chuck



BISON Item: 7-783-0600
 A2-5 Mount: 7-789-6065
 Description: 4-Jaw Power Chuck 2605-160-45K
 Chuck Body: Forged-Steel
 Jaws: 2 Piece Jaws (Master+Soft Top Jaws)
 Price: Call For Pricing

Collet Chuck Packages

5C Set-Tru Collet Chuck



BISON Item: 7-862-0505
 A2-5 Mount: 7-874-055
 Description: 5C Set-Tru Collet Chuck
 3960-5"-5C
 Chuck Body: Forged-Steel
 Price: Call For Pricing

16C Set-Tru Collet Chuck



BISON Item: 7-862-0605
 A2-5 Mount: 7-874-065
 Description: 16C Set-Tru Collet Chuck
 3965-6"-16C
 Chuck Body: Forged-Steel
 Price: Call For Pricing

Live Center Options

R-Series Live Center



BISON Item: 7-568-103
 Description: 4-Jaw Independent Chuck
 Precision: 0.0001
 Max Weight: 1,100 lbs
 RPM: 5,000
 Price: Call For Pricing

Precision Live Center



BISON Item: 7-565-103
 Description: 4-Jaw Independent Chuck
 Precision: 0.0001
 Max Weight: 990 lbs
 RPM: 4,000
 Price: Call For Pricing

Standard Live Center



BISON Item: 7-565-003
 Description: MT3 Live Center
 Precision: 0.0003
 Max Weight: 990 lbs
 RPM: 4,000
 Price: Call For Pricing

Live Center Set



BISON Item: 7-570-003
 Description: Super Precision MT4 Live Center
 Precision: 0.0004
 Max Weight: 264 lbs
 RPM: 4,000
 Price: Call For Pricing

Alternative Options Available



BISON

HAAS ST15/ST15Y

Product Offerings

A2-6 Spindle



Manual Chuck Packages

8" 3-Jaw Set-Tru Chuck



BISON Item: 7-866-0800
 A2-5 Mount: 7-874-086
 Description: 3-Jaw Scroll Chuck 3565-8"
 Chuck Body: Forged-Steel
 Jaws: 2 Piece Jaws (Master+Top Jaws)
 Price: Call For Pricing

8" 4-Jaw Independent Chuck



BISON Item: 7-856-0816F
 Description: 4-Jaw Independent Chuck
 4317-8" A2-6 Direct Mount
 Chuck Body: Forged-Steel
 Jaws: 2 Piece Jaws (Master+Top Jaws)
 Price: Call For Pricing

Power Chuck Packages

8" 3-Jaw Power Chuck



BISON Item: 7-781-0800
 A2-5 Mount: 7-789-5086
 Description: 3-Jaw Power Chuck 2405-200-52K
 Chuck Body: Forged-Steel
 Jaws: 2 Piece Jaws (Master+Soft Top Jaws)
 Price: Call For Pricing

8" 4-Jaw Power Chuck



BISON Item: 7-783-0800
 A2-5 Mount: 7-789-6086
 Description: 4-Jaw Power Chuck 2605-200-52K
 Chuck Body: Forged-Steel
 Jaws: 2 Piece Jaws (Master+Soft Top Jaws)
 Price: Call For Pricing

Collet Chuck Packages

5C Set-Tru Collet Chuck



BISON Item: 7-862-0505
 A2-5 Mount: 7-874-056
 Description: 5C Set-Tru Collet Chuck
 3960-5"-5C
 Chuck Body: Forged-Steel
 Price: Call For Pricing

16C Set-Tru Collet Chuck



BISON Item: 7-862-0605
 A2-5 Mount: 7-874-066
 Description: 16C Set-Tru Collet Chuck
 3965-6"-16C
 Chuck Body: Forged-Steel
 Price: Call For Pricing

Live Center Options

R-Series Live Center



BISON Item: 7-568-103
 Description: 4-Jaw Independent Chuck
 Precision: 0.0001
 Max Weight: 1,100 lbs
 RPM: 5,000
 Price: Call For Pricing

Precision Live Center



BISON Item: 7-565-103
 Description: 4-Jaw Independent Chuck
 Precision: 0.0001
 Max Weight: 990 lbs
 RPM: 4,000
 Price: Call For Pricing

Standard Live Center



BISON Item: 7-565-003
 Description: MT3 Live Center
 Precision: 0.0003
 Max Weight: 990 lbs
 RPM: 4,000
 Price: Call For Pricing

Live Center Set



BISON Item: 7-570-003
 Description: Super Precision MT4 Live Center
 Precision: 0.0004
 Max Weight: 264 lbs
 RPM: 4,000
 Price: Call For Pricing

Alternative Options Available



BISON

HAAS ST20/ST20Y

Product Offerings

A2-6 Spindle



3-Jaw Scroll Chuck Options

8" Standard Package



BISON Item: 7-812-0800
 A2-6 Mount: 7-873-086F
 Description: 3-Jaw Scroll Chuck 3275-8"
 Chuck Body: Semi-Steel
 Jaws: 2 Piece Jaws (Master+Top Jaws)
 Price: Call For Pricing

10" Standard Package



BISON Item: 7-812-1000
 A2-6 Mount: 7-873-106F
 Description: 3-Jaw Scroll Chuck 3275-10"
 Chuck Body: Semi-Steel
 Jaws: 2 Piece Jaws (Master+Top Jaws)
 Price: Call For Pricing

8" Premium Package



BISON Item: 7-866-0800
 A2-6 Mount: 7-874-086
 Description: 3-Jaw Scroll Chuck 3565-8"
 Set-Tru with Fine Adjustment
 Chuck Body: Forged-Steel
 Jaws: 2 Piece Jaws (Master+Top Jaws)
 Price: Call For Pricing

10" Premium Package



BISON Item: 7-866-1000
 A2-6 Mount: 7-874-106
 Description: 3-Jaw Scroll Chuck 3565-10"
 Set-Tru with Fine Adjustment
 Chuck Body: Forged-Steel
 Jaws: 2 Piece Jaws (Master+Top Jaws)
 Price: Call For Pricing

4-Jaw Independent Chuck Options

8" Independent Chuck



BISON Item: 7-851-0816
 Description: 4-Jaw Independent Chuck
 4314-8" A2-6 Direct Mount
 Chuck Body: Semi-Steel
 Jaws: Solid Jaws
 Price: Call For Pricing

10" Independent Chuck



BISON Item: 7-851-1016
 Description: 4-Jaw Independent Chuck
 4314-10" A2-6 Direct Mount
 Chuck Body: Semi-Steel
 Jaws: Solid Jaws
 Price: Call For Pricing

Power Chuck Options

8" 3-Jaw Power Chuck



BISON Item: 7-781-0800
 A2-6 Mount: 7-789-5086
 Description: 3-Jaw Power Chuck 2405-200-52K
 Chuck Body: Forged-Steel
 Jaws: 2 Piece Jaws (Master+Soft Top Jaws)
 Price: Call For Pricing

10" 3-Jaw Power Chuck



BISON Item: 7-781-1000
 A2-6 Mount: 7-789-5106
 Description: 3-Jaw Power Chuck 2405-250-75K
 Chuck Body: Forged-Steel
 Jaws: 2 Piece Jaws (Master+Soft Top Jaws)
 Price: Call For Pricing

Collet Chuck Options

5C Collet Chuck



BISON Item: 7-862-0505
 A2-6 Mount: 7-874-056
 Description: 5C Set-Tru Collet Chuck
 3960-5"-5C
 Chuck Body: Forged Steel
 Price: Call For Pricing

16C Collet Chuck



BISON Item: 7-862-0605
 A2-6 Mount: 7-874-066
 Description: 16C Set-Tru Collet Chuck
 3965-6"-16C
 Chuck Body: Forged Steel
 Price: Call For Pricing

Alternative Options Available



BISON

HAAS ST25/ST25Y

Product Offerings

A2-6 Spindle



3-Jaw Scroll Chuck Options

10" Standard Package



BISON Item: 7-812-1000
 A2-6 Mount: 7-873-106F
 Description: 3-Jaw Scroll Chuck 3275-10"
 Chuck Body: Semi-Steel
 Jaws: 2 Piece Jaws (Master+Top Jaws)
 Price: Call For Pricing

12" Standard Package



BISON Item: 7-801-1216
 Description: 3-Jaw Scroll Chuck 3215-12"
 Direct Mount A2-6
 Chuck Body: Semi-Steel
 Jaws: 2 Piece Jaws (Master+Top Jaws)
 Price: Call For Pricing

10" Premium Package



BISON Item: 7-866-1000
 A2-6 Mount: 7-874-106
 Description: 3-Jaw Scroll Chuck 3565-10"
 Set-Tru with Fine Adjustment
 Chuck Body: Forged-Steel
 Jaws: 2 Piece Jaws (Master+Top Jaws)
 Price: Call For Pricing

12" Premium Package



BISON Item: 7-866-1200
 A2-6 Mount: 7-874-126
 Description: 3-Jaw Scroll Chuck 3565-12"
 Set-Tru with Fine Adjustment
 Chuck Body: Forged-Steel
 Jaws: 2 Piece Jaws (Master+Top Jaws)
 Price: Call For Pricing

4-Jaw Independent Chuck Options

10" Independent Chuck



BISON Item: 7-851-1016
 Description: 4-Jaw Independent Chuck
 4314-10" A2-6 Direct Mount
 Chuck Body: Semi-Steel
 Jaws: Solid Jaws
 Price: Call For Pricing

12" Independent Chuck



BISON Item: 7-851-1226
 Description: 4-Jaw Independent Chuck
 4314-12" A2-6 Direct Mount
 Chuck Body: Semi-Steel
 Jaws: Solid Jaws
 Price: Call For Pricing

Power Chuck Options

10" 3-Jaw Power Chuck



BISON Item: 7-781-1000
 A2-6 Mount: 7-789-5106
 Description: 3-Jaw Power Chuck 2405-250-75K
 Chuck Body: Forged-Steel
 Jaws: 2 Piece Jaws (Master+Soft Top Jaws)
 Price: Call For Pricing

12" 3-Jaw Power Chuck



BISON Item: 7-781-1200
 A2-6 Mount: 7-789-5126
 Description: 3-Jaw Power Chuck 2405-315-91K
 Chuck Body: Forged-Steel
 Jaws: 2 Piece Jaws (Master+Soft Top Jaws)
 Price: Call For Pricing

Collet Chuck Options

5C Collet Chuck



BISON Item: 7-862-0505
 A2-6 Mount: 7-874-056
 Description: 5C Set-Tru Collet Chuck
 3960-5"-5C
 Chuck Body: Forged Steel
 Price: Call For Pricing

16C Collet Chuck



BISON Item: 7-862-0605
 A2-6 Mount: 7-874-066
 Description: 16C Set-Tru Collet Chuck
 3965-6"-16C
 Chuck Body: Forged Steel
 Price: Call For Pricing

Alternative Options Available



BISON

HAAS ST30/ST30Y

Product Offerings

A2-6 Spindle



3-Jaw Scroll Chuck Options

10" Standard Package



BISON Item: 7-812-1000
 A2-6 Mount: 7-873-106F
 Description: 3-Jaw Scroll Chuck 3275-10"
 Chuck Body: Semi-Steel
 Jaws: 2 Piece Jaws (Master+Top Jaws)
 Price: Call For Pricing

12" Standard Package



BISON Item: 7-801-1216
 Description: 3-Jaw Scroll Chuck 3215-12"
 Direct Mount A2-6
 Chuck Body: Semi-Steel
 Jaws: 2 Piece Jaws (Master+Top Jaws)
 Price: Call For Pricing

10" Premium Package



BISON Item: 7-866-1000
 A2-6 Mount: 7-874-106
 Description: 3-Jaw Scroll Chuck 3565-10"
 Set-Tru with Fine Adjustment
 Chuck Body: Forged-Steel
 Jaws: 2 Piece Jaws (Master+Top Jaws)
 Price: Call For Pricing

12" Premium Package



BISON Item: 7-866-1200
 A2-6 Mount: 7-874-126
 Description: 3-Jaw Scroll Chuck 3565-12"
 Set-Tru with Fine Adjustment
 Chuck Body: Forged-Steel
 Jaws: 2 Piece Jaws (Master+Top Jaws)
 Price: Call For Pricing

4-Jaw Independent Chuck Options

10" Independent Chuck



BISON Item: 7-851-1016
 Description: 4-Jaw Independent Chuck
 4314-10" A2-6 Direct Mount
 Chuck Body: Semi-Steel
 Jaws: Solid Jaws
 Price: Call For Pricing

12" Independent Chuck



BISON Item: 7-851-1226
 Description: 4-Jaw Independent Chuck
 4314-12" A2-6 Direct Mount
 Chuck Body: Semi-Steel
 Jaws: Solid Jaws
 Price: Call For Pricing

Power Chuck Options

10" 3-Jaw Power Chuck



BISON Item: 7-781-1000
 A2-6 Mount: 7-789-5106
 Description: 3-Jaw Power Chuck 2405-250-75K
 Chuck Body: Forged-Steel
 Jaws: 2 Piece Jaws (Master+Soft Top Jaws)
 Price: Call For Pricing

12" 3-Jaw Power Chuck



BISON Item: 7-781-1200
 A2-6 Mount: 7-789-5126
 Description: 3-Jaw Power Chuck 2405-315-91K
 Chuck Body: Forged-Steel
 Jaws: 2 Piece Jaws (Master+Soft Top Jaws)
 Price: Call For Pricing

Collet Chuck Options

5C Collet Chuck



BISON Item: 7-862-0505
 A2-6 Mount: 7-874-056
 Description: 5C Set-Tru Collet Chuck
 3960-5"-5C
 Chuck Body: Forged Steel
 Price: Call For Pricing

16C Collet Chuck



BISON Item: 7-862-0605
 A2-6 Mount: 7-874-066
 Description: 16C Set-Tru Collet Chuck
 3965-6"-16C
 Chuck Body: Forged Steel
 Price: Call For Pricing

Alternative Options Available



BISON HAAS DS30Y Product Offerings A2-6 Spindle



3-Jaw Scroll Chuck Options

10" Standard Package



BISON Item: 7-812-1000
A2-6 Mount: 7-873-106F
Description: 3-Jaw Scroll Chuck 3275-10"
Chuck Body: Semi-Steel
Jaws: 2 Piece Jaws (Master+Top Jaws)
Price: Call For Pricing

12" Standard Package



BISON Item: 7-801-1216
Description: 3-Jaw Scroll Chuck 3215-12"
Direct Mount A2-6
Chuck Body: Semi-Steel
Jaws: 2 Piece Jaws (Master+Top Jaws)
Price: Call For Pricing

10" Premium Package



BISON Item: 7-866-1000
A2-6 Mount: 7-874-106
Description: 3-Jaw Scroll Chuck 3565-10"
Set-Tru with Fine Adjustment
Chuck Body: Forged-Steel
Jaws: 2 Piece Jaws (Master+Top Jaws)
Price: Call For Pricing

12" Premium Package



BISON Item: 7-866-1200
A2-6 Mount: 7-874-126
Description: 3-Jaw Scroll Chuck 3565-12"
Set-Tru with Fine Adjustment
Chuck Body: Forged-Steel
Jaws: 2 Piece Jaws (Master+Top Jaws)
Price: Call For Pricing

4-Jaw Independent Chuck Options

10" Independent Chuck



BISON Item: 7-851-1016
Description: 4-Jaw Independent Chuck
4314-10" A2-6 Direct Mount
Chuck Body: Semi-Steel
Jaws: Solid Jaws
Price: Call For Pricing

12" Independent Chuck



BISON Item: 7-851-1226
Description: 4-Jaw Independent Chuck
4314-12" A2-6 Direct Mount
Chuck Body: Semi-Steel
Jaws: Solid Jaws
Price: Call For Pricing

Power Chuck Options

10" 3-Jaw Power Chuck



BISON Item: 7-781-1000
A2-6 Mount: 7-789-5106
Description: 3-Jaw Power Chuck 2405-250-75K
Chuck Body: Forged-Steel
Jaws: 2 Piece Jaws (Master+Soft Top Jaws)
Price: Call For Pricing

12" 3-Jaw Power Chuck



BISON Item: 7-781-1200
A2-6 Mount: 7-789-5126
Description: 3-Jaw Power Chuck 2405-315-91K
Chuck Body: Forged-Steel
Jaws: 2 Piece Jaws (Master+Soft Top Jaws)
Price: Call For Pricing

Collet Chuck Options

5C Collet Chuck



BISON Item: 7-862-0505
A2-6 Mount: 7-874-056
Description: 5C Set-Tru Collet Chuck
3960-5"-5C
Chuck Body: Forged Steel
Price: Call For Pricing

16C Collet Chuck



BISON Item: 7-862-0605
A2-6 Mount: 7-874-066
Description: 16C Set-Tru Collet Chuck
3965-6"-16C
Chuck Body: Forged Steel
Price: Call For Pricing

Alternative Options Available



BISON

HAAS ST35/ST35Y

Product Offerings

A2-8 Spindle



3-Jaw Scroll Chuck Options

12" Standard Package



BISON Item: 7-812-1200
 A2-8 Mount: 7-873-128F
 Description: 3-Jaw Scroll Chuck 3275-12"
 Chuck Body: Semi-Steel
 Jaws: 2 Piece Jaws (Master+Top Jaws)
 Price: Call For Pricing

16" Standard Package



BISON Item: 7-801-1618
 Description: 3-Jaw Scroll Chuck 3215-16"
 Direct Mount A2-8
 Chuck Body: Semi-Steel
 Jaws: 2 Piece Jaws (Master+Top Jaws)
 Price: Call For Pricing

12" Premium Package



BISON Item: 7-866-1200
 A2-6 Mount: 7-874-128
 Description: 3-Jaw Scroll Chuck 3565-12"
 Set-Tru with Fine Adjustment
 Chuck Body: Forged-Steel
 Jaws: 2 Piece Jaws (Master+Top Jaws)
 Price: Call For Pricing

16" Premium Package



BISON Item: 7-866-1600
 A2-6 Mount: 7-874-168
 Description: 3-Jaw Scroll Chuck 3565-16"
 Set-Tru with Fine Adjustment
 Chuck Body: Forged-Steel
 Jaws: 2 Piece Jaws (Master+Top Jaws)
 Price: Call For Pricing

4-Jaw Independent Chuck Options

12" Independent Chuck



BISON Item: 7-851-1218
 Description: 4-Jaw Independent Chuck
 4314-12" A2-8 Direct Mount
 Chuck Body: Semi-Steel
 Jaws: Solid Jaws
 Price: Call For Pricing

16" Independent Chuck



BISON Item: 7-851-1628
 Description: 4-Jaw Independent Chuck
 4314-16" A2-8 Direct Mount
 Chuck Body: Semi-Steel
 Jaws: Solid Jaws
 Price: Call For Pricing

Power Chuck Options

12" 3-Jaw Power Chuck



BISON Item: 7-781-1200
 A2-6 Mount: 7-789-5128
 Description: 3-Jaw Power Chuck 2405-315-91K
 Chuck Body: Forged-Steel
 Jaws: 2 Piece Jaws (Master+Soft Top Jaws)
 Price: Call For Pricing

16" 3-Jaw Power Chuck



BISON Item: 7-781-1600
 A2-6 Mount: 7-789-51608
 Description: 3-Jaw Power Chuck 2405-400-120K
 Chuck Body: Forged-Steel
 Jaws: 2 Piece Jaws (Master+Soft Top Jaws)
 Price: Call For Pricing

Collet Chuck Option

16C Collet Chuck



BISON Item: 7-862-0605
 A2-6 Mount: 7-874-068
 Description: 16C Set-Tru Collet Chuck
 3965-6"-16C
 Chuck Body: Forged Steel
 Price: Call For Pricing

Alternative Options Available



BISON

HAAS ST40/ST40L

Product Offerings

A2-8 Spindle



3-Jaw Scroll Chuck Options

16" Standard Package



BISON Item: 7-801-1618
 Description: 3-Jaw Scroll Chuck 3215-16"
 Direct Mount A2-8
 Chuck Body: Semi-Steel
 Jaws: 2 Piece Jaws (Master+Top Jaws)
 Price: Call For Pricing

20" Standard Package



BISON Item: 7-812-2000
 A2-8 Mount: 7-873-208F
 Description: 3-Jaw Scroll Chuck 3275-20"
 Chuck Body: Semi-Steel
 Jaws: 2 Piece Jaws (Master+Top Jaws)
 Price: Call For Pricing

16" Premium Package



BISON Item: 7-866-1600
 A2-6 Mount: 7-874-168
 Description: 3-Jaw Scroll Chuck 3565-16"
 Set-Tru with Fine Adjustment
 Chuck Body: Forged-Steel
 Jaws: 2 Piece Jaws (Master+Top Jaws)
 Price: Call For Pricing

20" Premium Package



BISON Item: 7-866-2000
 A2-6 Mount: 7-874-208
 Description: 3-Jaw Scroll Chuck 3565-20"
 Set-Tru with Fine Adjustment
 Chuck Body: Forged-Steel
 Jaws: 2 Piece Jaws (Master+Top Jaws)
 Price: Call For Pricing

4-Jaw Independent Chuck Options

16" Independent Chuck



BISON Item: 7-851-1628
 Description: 4-Jaw Independent Chuck
 4314-16" A2-8 Direct Mount
 Chuck Body: Semi-Steel
 Jaws: Solid Jaws
 Price: Call For Pricing

20" Independent Chuck



BISON Item: 7-851-2028
 Description: 4-Jaw Independent Chuck
 4314-20" A2-8 Direct Mount
 Chuck Body: Semi-Steel
 Jaws: Solid Jaws
 Price: Call For Pricing

Power Chuck Options

16" 3-Jaw Power Chuck



BISON Item: 7-781-1600
 A2-6 Mount: 7-789-51608
 Description: 3-Jaw Power Chuck 2405-400-120K
 Chuck Body: Forged-Steel
 Jaws: 2 Piece Jaws (Master+Soft Top Jaws)
 Price: Call For Pricing

20" 3-Jaw Power Chuck



BISON Item: 7-781-2000
 A2-6 Mount: 7-789-52008
 Description: 3-Jaw Power Chuck 2405-500-160K
 Chuck Body: Forged-Steel
 Jaws: 2 Piece Jaws (Master+Soft Top Jaws)
 Price: Call For Pricing

Collet Chuck Option

16C Collet Chuck



BISON Item: 7-862-0605
 A2-6 Mount: 7-874-068
 Description: 16C Set-Tru Collet Chuck
 3965-6"-16C
 Chuck Body: Forged Steel
 Price: Call For Pricing

Alternative Options Available



BISON

HAAS ST45/ST45L

Product Offerings

A2-11 Spindle



3-Jaw Scroll Chuck Options

20" Semi-Steel Package



BISON Item: 7-801-2029
 Description: 3-Jaw Scroll Chuck 3275-20"
 Direct Mount A2-11
 Chuck Body: Semi-Steel
 Jaws: 2 Piece Jaws (Master+Top Jaws)
 Price: Call For Pricing

20" Froged Steel Package



BISON Item: 7-821-2029
 Description: 3-Jaw Scroll Chuck 3515-20"
 Direct Mount A2-11
 Chuck Body: Semi-Steel
 Jaws: 2 Piece Jaws (Master+Top Jaws)
 Price: Call For Pricing

20" Premium Package



BISON Item: 7-866-2000
 A2-11 Mount: 7-874-209
 Description: 3-Jaw Scroll Chuck 3565-20"
 Set-Tru with Fine Adjustment
 Chuck Body: Forged-Steel
 Jaws: 2 Piece Jaws (Master+Top Jaws)
 Price: Call For Pricing

20" Heavy Duty Package



BISON Item: 7-825-2011
 Description: 3-Jaw Scroll Chuck 3515-20"
 Big Bore A2-11 Direct Mount
 Chuck Body: Forged-Steel
 Jaws: 2 Piece Jaws (Master+Top Jaws)
 Price: Call For Pricing

4-Jaw Independent Chuck Options

20" Independent Chuck



BISON Item: 7-859-2033
 Description: 4-Jaw Independent Chuck
 4317-20" A2-11 Direct Mount
 6.50" Thru-Bore
 Chuck Body: Forged-Steel
 Jaws: 2 Piece Jaws (Master+Soft Top Jaws)
 Price: Call For Pricing

Power Chuck Options

20" 3-Jaw Power Chuck



BISON Item: 7-781-2000
 A2-11 Mount: 7-789-52011
 Description: 3-Jaw Power Chuck 2405-500-160K
 160mm Thru-Hole
 Chuck Body: Forged-Steel
 Jaws: 2 Piece Jaws (Master+Soft Top Jaws)
 Price: Call For Pricing

Pneumatic Chuck Option

20" 3-Jaw Pneumatic Chuck



BISON Item: 7-785-2000
 A2-11 Mount: Special Plate
 Description: 2500-500-230 Pneumatic Chuck
 OD Clamping, 230mm Thru-Hole
 Chuck Body: Forged Steel
 Price: Call For Pricing

Alternative Options Available

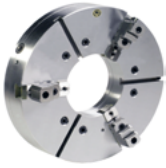


BISON HAAS ST55 Product Offerings A2-20 Spindle



3-Jaw Scroll Chuck Options

25" Heavy Duty Package



BISON Item: 7-825-2520
Description: 3-Jaw Scroll Chuck 3515-25"
Direct Mount A2-20, 12.6" Bore
Chuck Body: Forged-Steel
Jaws: 2 Piece Jaws (Master+Top Jaws)
Price: Call For Pricing

4-Jaw Independent Chuck Options

25" Independent Chuck



BISON Item: 7-859-2555
Description: 4-Jaw Independent Chuck 4317-25"
A2-20 Direct Mount, 12.6" Bore
Chuck Body: Forged-Steel
Jaws: 2 Piece Jaws (Master+Soft Top Jaws)
Price: Call For Pricing

Power Chuck Options

20" 3-Jaw Power Chuck



BISON Item: 7-781-2000
A2-20 Mount: Special Plate
Description: 3-Jaw Power Chuck 2405-500-160K
160mm Thru-Hole
Chuck Body: Forged-Steel
Jaws: 2 Piece Jaws (Master+Soft Top Jaws)
Price: Call For Pricing

25" 3-Jaw Power Chuck



BISON Item: 7-781-2500
A2-20 Mount: Special Plate
Description: 3-Jaw Power Chuck 2405-630-200K
200mm Thru-Hole
Chuck Body: Forged-Steel
Jaws: 2 Piece Jaws (Master+Soft Top Jaws)
Price: Call For Pricing

Pneumatic Chuck Options

20" 3-Jaw Pneumatic Chuck



BISON Item: 7-785-2000
A2-20 Mount: Special Plate
Description: 2500-500-230 Pneumatic Chuck
OD Clamping, 230mm Thru-Hole
Chuck Body: Forged Steel
Price: Call For Pricing
*ID & OD Clamping Chuck Also Available

25" 3-Jaw Pneumatic Chuck



BISON Item: 7-781-2500
A2-20 Mount: Special Plate
Description: 2500-630-325 Pneumatic Chuck
OD Clamping, 325mm Thru-Hole
Chuck Body: Forged-Steel
Price: Call For Pricing
*ID & OD Clamping Chuck Also Available

Alternative Options Available