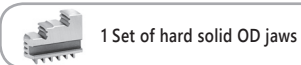
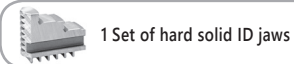




3504-P



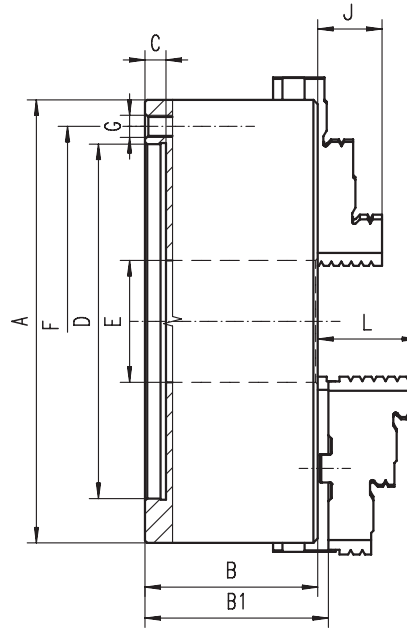
Standard accessories



Spare parts 99-141

Technical data 142-148

Code No.	Type
7-829-0300P	3504-3"-P
7-829-0400P	3504-4"-P
7-829-0500P	3504-5"-P
7-829-0600P	3504-6"-P
7-829-0800P	3504-8"-P
7-829-1000P	3504-10"-P
7-829-1200P	3504-12"-P
7-829-1600P	3504-16"-P
7-829-2000P	3504-20"-P
7-829-2500P	3504-25"-P



- BISON PREMIUM chucks are characterized by exceptionally high accuracy values for all operations that require maximum precision - specially designed for our most demanding customers
- Hardened and ground working surfaces
- Balanced scroll plate
- Chucks ø20" and above have additional T-slots

A [in]	B [in]	B1 [in]	C [in]	D H7 [in]	E [in]	F [in]	G	J [in]	L [in]	Weight [lbs]
3.15	1.73	-	0.12	2.20	0.63	2.64	3xM6	0.51	-	3.31
3.94	1.97	-	0.12	2.76	0.79	3.27	3xM8	0.63	-	6.17
4.92	2.34	2.53	0.16	3.74	1.40	4.25	3xM8	0.79	1.57	11.02
6.30	2.68	2.87	0.16	4.92	1.65	5.51	6xM10	1.26	1.69	22.05
7.87	3.07	3.26	0.16	6.30	2.17	6.93	6xM10	1.14	1.77	38.58
9.84	3.50	3.65	0.20	7.87	2.99	8.82	6xM12	1.34	2.09	63.93
12.40	3.79	3.99	0.20	10.24	4.06	11.26	6xM16	1.69	2.24	110.23
15.75	4.29	4.60	0.20	12.99	5.35	14.25	6xM16	2.17	2.64	187.39
19.69	4.69	5.11	0.20	16.54	7.48	18.03	6xM16	2.36	3.11	319.67
24.80	5.08	5.52	0.28	21.46	9.92	23.07	6xM16	2.76	3.43	551.16

Larger diameters available on page 82-93!

3505-P



Standard accessories



Spare parts 99-141

Technical data 142-148

Type	Code No.
-	-
-	-
3505-5"-P	7-820-0500P
3505-6"-P	7-820-0600P
3505-8"-P	7-820-0800P
3505-10"-P	7-820-1000P
3505-12"-P	7-820-1200P
3505-16"-P	7-820-1600P
3505-20"-P	7-820-2000P
3505-25"-P	7-820-2500P