



3-JAW SELF-CENTERING SCROLL CHUCKS

- FRONT MOUNT PLAIN BACK
- FORGED STEEL BODY



- 1
- 2
- 3
- 4
- 5

■ Precision Models Available Upon Request

3574



Standard accessories



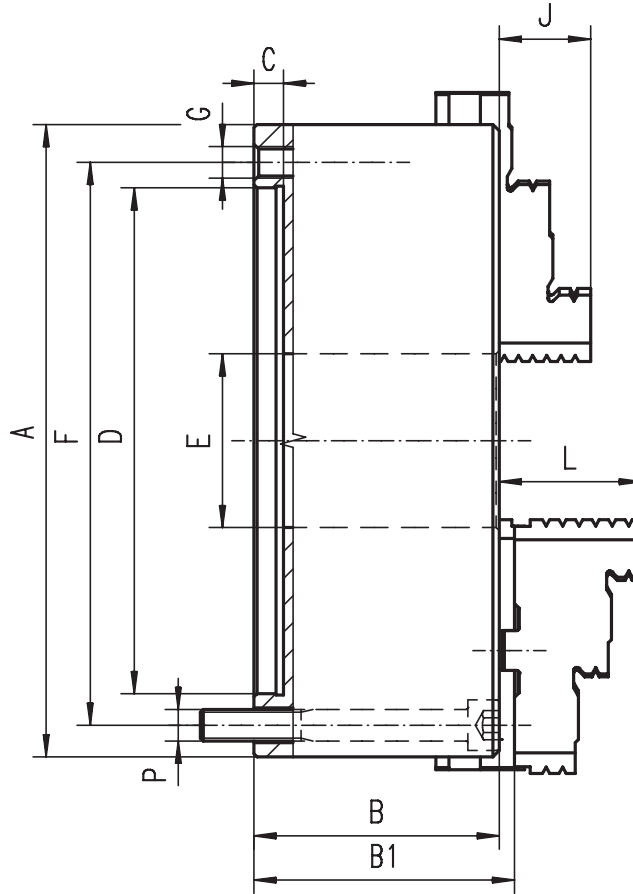
1 Set of hard solid ID jaws



1 Set of hard solid OD jaws



1 Wrench + 1 Hex key



3575



Standard accessories



1 Set of hard top jaws



1 Set of hard master jaws



1 Wrench + 1 Hex key

- Hardened and ground working surfaces
- Balanced scroll plate
- Chucks ø20" and above have additional T-slots
- Flexible mounting system: mounting from the back or front of the chuck by use of an adapter plate

Code No.	Type	A [in]	B [in]	B1 [in]	C [in]	D H7 [in]	E [in]	F [in]	G	J [in]	L [in]	3574	3575	Weight [lbs]	Type	Code No.
													P			
7-817-0300	3574-3"	3.15	1.73	-	0.12	2.20	0.63	2.64	3xM6	0.51	-	3xM6	3x 1/4-20	3.31	-	-
7-817-0400	3574-4"	3.94	1.97	-	0.12	2.76	0.79	3.27	3xM8	0.63	-	3xM8	3x 5/16-18	6.17	-	-
7-817-0500	3574-5"	4.92	2.34	2.53	0.16	3.74	1.40	4.25	3xM8	0.79	1.57	3xM8	3x 5/16-18	11.02	3575-5"	7-813-0500
7-817-0600	3574-6"	6.30	2.68	2.87	0.16	4.92	1.65	5.51	3xM10	1.26	1.69	3xM10	3x 3/8-16	22.05	3575-6"	7-813-0600
7-817-0800	3574-8"	7.87	3.07	3.26	0.16	6.30	2.17	6.93	3xM10	1.14	1.77	3xM10	3x 3/8-16	38.58	3575-8"	7-813-0800
7-817-1000	3574-10"	9.84	3.50	3.65	0.20	7.87	2.99	8.82	3xM12	1.34	2.09	3xM12	3x 1/2-13	63.93	3575-10"	7-813-1000
7-817-1200	3574-12"	12.40	3.83	3.99	0.20	10.24	4.06	11.26	3xM16	1.69	2.24	3xM16	3x 5/8-11	110.23	3575-12"	7-813-1200
7-817-1600	3574-16"	15.75	4.29	4.60	0.20	12.99	5.35	14.25	3xM16	2.17	2.64	3xM16	3x 5/8-11	187.39	3575-16"	7-813-1600
7-817-2000	3574-20"	19.69	4.69	5.11	0.20	16.54	7.48	18.03	6xM16	2.36	3.11	6xM16	6x 5/8-11	319.67	3575-20"	7-813-2000
7-817-2500	3574-25"	24.80	5.08	5.52	0.28	21.46	9.92	23.07	6xM16	2.76	3.43	6xM16	6x 5/8-11	551.16	3575-25"	7-813-2500