

- FRONT MOUNT PLAIN BACK
- CAST IRON BODY

3274



Standard accessories



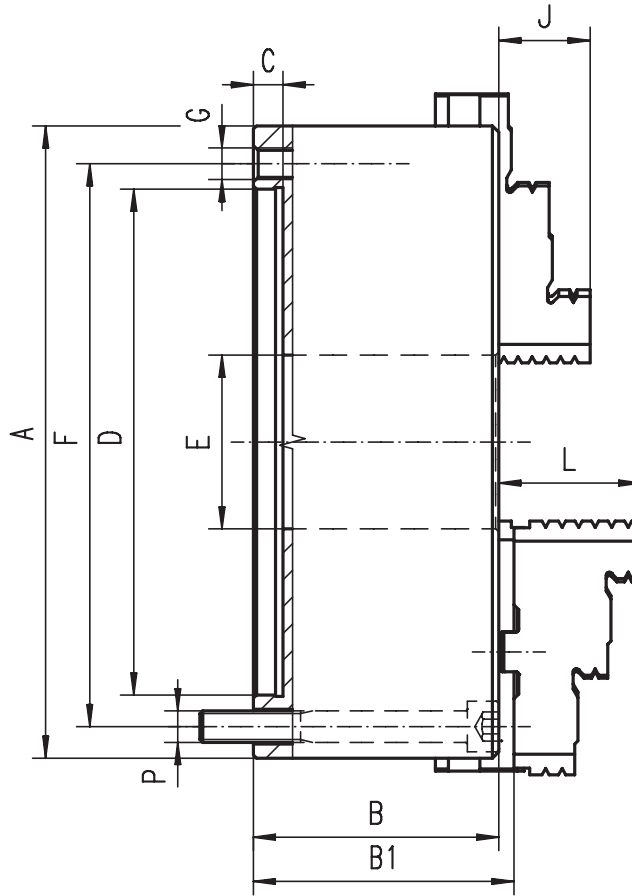
1 Set of hard solid ID jaws



1 Set of hard solid OD jaws



1 Wrench + 1 Hex key



3275



Standard accessories



1 Set of hard top jaws



1 Set of hard master jaws



1 Wrench + 1 Hex key

- Ground working surfaces
- Flexible mounting system: mounting from the back or front of the chuck by use of an adapter plate

Code No.	Type	A [in]	B [in]	B1 [in]	C [in]	D H7 [in]	E [in]	F [in]	G	J [in]	L [in]	P	Weight [lbs]	Type	Code No.
7-811-0300	3274-3"	3.15	1.73	-	0.12	2.20	0.63	2.64	3xM6	0.51	-	3x 1/4-20	3.31	-	-
7-811-0400	3274-4"	3.94	1.97	-	0.12	2.76	0.79	3.27	3xM8	0.63	-	3x 5/16-18	6.17	-	-
7-811-0500	3274-5"	4.92	2.20	2.39	0.16	3.74	1.26	4.25	3xM8	0.79	1.57	3x 5/16-18	11.02	3275-5"	7-812-0500
7-811-0600	3274-6"	6.30	2.54	2.73	0.16	4.92	1.65	5.51	3xM10	1.26	1.69	3x 3/8-16	22.05	3275-6"	7-812-0600
7-811-0800	3274-8"	7.87	2.95	3.14	0.16	6.30	2.17	6.93	3xM10	1.14	1.77	3x 3/8-16	38.58	3275-8"	7-812-0800
7-811-1000	3274-10"	9.84	3.35	3.50	0.20	7.87	2.99	8.82	3xM12	1.34	2.09	3x 1/2-13	63.93	3275-10"	7-812-1000
7-811-1200	3274-12"	12.40	3.70	3.90	0.20	10.24	4.06	11.26	3xM16	1.69	2.24	3x 5/8-11	110.23	3275-12"	7-812-1200
7-811-1600	3274-16"	15.75	4.13	4.48	0.20	12.99	5.35	14.25	3xM16	2.17	2.64	3x 5/8-11	187.39	3275-16"	7-812-1600
7-811-2000	3274-20"	19.69	4.72	5.15	0.20	16.54	7.48	18.03	6xM16	2.36	3.11	6x 5/8-11	319.67	3275-20"	7-812-2000
7-811-2500	3274-25"	24.80	5.31	5.76	0.28	21.46	9.92	23.07	6xM16	2.76	3.43	6x 5/8-11	551.16	3275-25"	7-812-2500