



3-JAW SELF-CENTERING SCROLL CHUCKS



- L-TYPE DIRECT MOUNT
- CAST IRON BODY

1

2

3

4

5

3255



Standard accessories



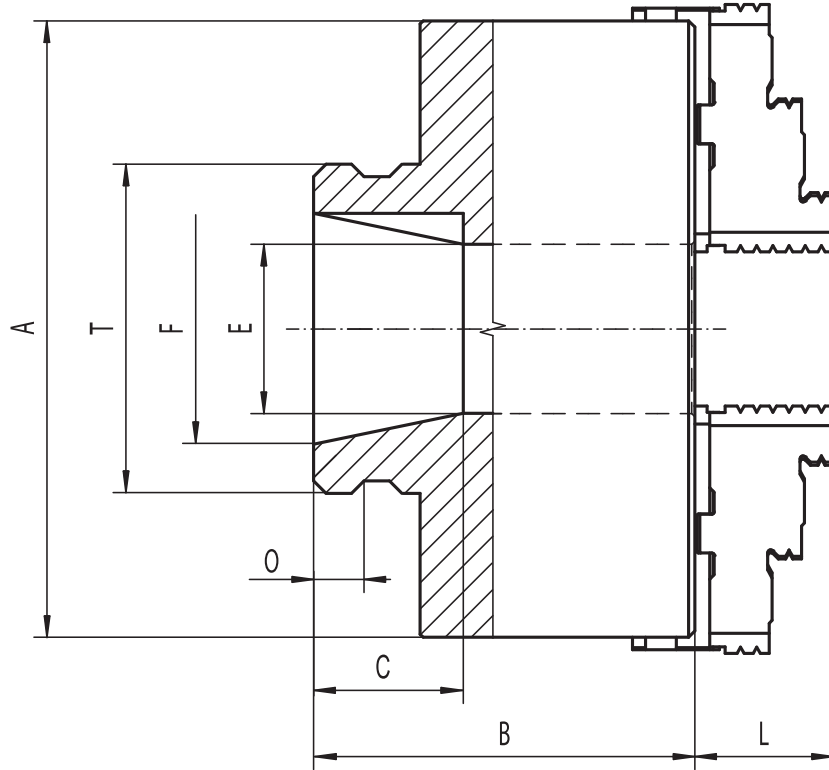
1 Set of hard top jaws



1 Set of hard master jaws



1 Wrench + 1 Hex key



- Hardened and ground working surfaces
- Balanced scroll plate

Code No.	Type	A [in]	Taper size	B [in]	C [in]	E [in]	E max [in]	F [in]	L [in]	O [in]	T [in]	Weight [lbs]
7-804-0641	3255-6" L00	6.30	L00	4.06	2.13	1.65	1.81	2-3/4	1.69	0.55	3-3/4 - 6	23
7-804-0642	3255-6" L0	6.30	L0	4.45	2.52	1.65	1.81	3-1/4	1.69	0.59	4-1/2 - 6	23
7-804-0841	3255-8" L00	7.87	L00	4.37	2.13	2.17	2.50	2-3/4	1.77	0.55	3-3/4 - 6	42
7-804-0842	3255-8" L0	7.87	L0	4.76	2.52	2.17	2.56	3-1/4	1.77	0.59	4-1/2 - 6	42
7-804-0843	3255-8" L1	7.87	L1	5.24	2.99	2.17	2.56	4-1/8	1.77	0.63	6 - 6	42
7-804-1042	3255-10" L0	9.84	L0	5.04	2.52	2.99	2.99	3-1/4	2.09	0.59	4-1/2 - 6	64
7-804-1043	3255-10" L1	9.84	L1	5.51	2.99	2.99	3.46	4-1/8	2.09	0.63	6 - 6	64
7-804-1044	3255-10" L2	9.84	L2	6.02	3.50	2.99	3.46	5-1/4	2.09	0.87	7-3/4 - 5	64
7-804-1242	3255-12" L0	12.40	L0	5.39	2.52	4.06	4.06	3-1/4	2.24	0.59	4-1/2 - 6	134
7-804-1243	3255-12" L1	12.40	L1	5.87	2.99	4.06	4.33	4-1/8	2.24	0.63	6 - 6	134
7-804-1244	3255-12" L2	12.40	L2	6.38	3.50	4.06	4.33	5-1/4	2.24	0.87	7-3/4 - 5	134
7-804-1643	3255-16" L1	15.75	L1	6.18	2.99	4.06	4.06	4-1/8	2.64	0.63	6 - 6	251
7-804-1644	3255-16" L2	15.75	L2	6.69	3.50	4.06	4.06	5-1/4	2.64	0.87	7-3/4 - 5	251