

- FRONT MOUNT PLAIN BACK
- CAST IRON BODY

3674



Standard accessories



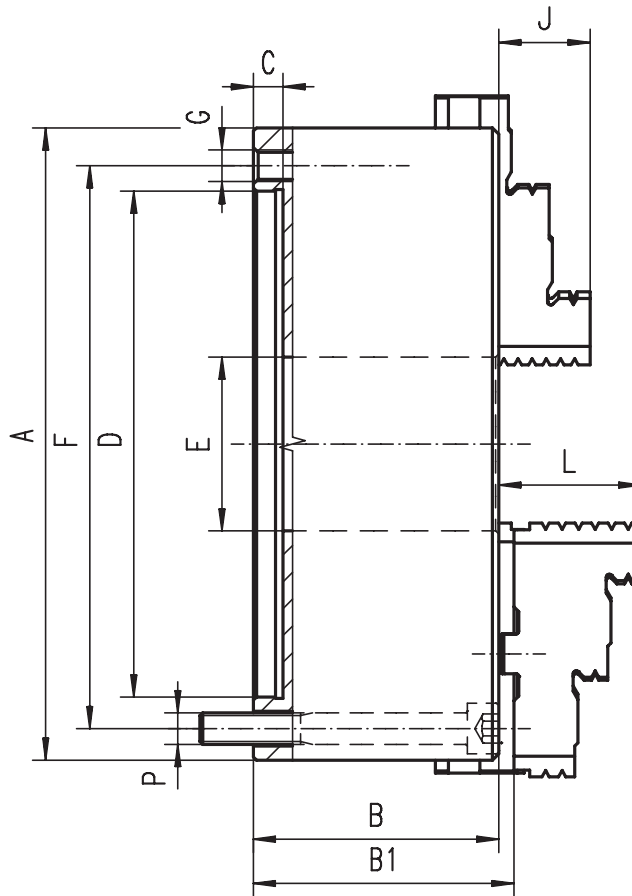
1 Set of hard solid ID jaws



1 Set of hard solid OD jaws



1 Wrench + 1 Hex key



3675



Standard accessories



1 Set of hard top jaws



1 Set of hard master jaws



1 Wrench + 1 Hex key

- Ground working surfaces
- Flexible mounting system: mounting from the back or front of the chuck by use of an adapter plate

Code No.	Type	A [in]	B [in]	B1 [in]	C [in]	D H7 [in]	E [in]	F [in]	G	J [in]	L [in]	3674	3675	Weight [lbs]	Type	Code No.
												P				
7-815-0500	3674-5"	4.92	2.20	2.39	0.16	3.74	1.26	4.25	-	0.79	1.57	3xM8	3xM8	11.02	3675-5"	7-814-0500
7-815-0600	3674-6"	6.30	3.33	2.73	0.16	4.92	1.65	5.51	3xM10	1.26	1.69	3xM10	3 x 3/8-16	22.05	3675-6"	7-814-0600
7-815-0800	3674-8"	7.87	2.95	3.14	0.16	6.30	2.17	6.93	3xM10	1.14	1.77	3xM10	3 x 3/8-16	38.58	3675-8"	7-814-0800
7-815-1000	3674-10"	9.84	3.35	3.50	0.20	7.87	2.99	8.82	3xM12	1.34	2.09	3xM12	3 x 1/2-13	63.93	3675-10"	7-814-1000
7-815-1200	3674-12"	12.40	3.70	3.90	0.20	10.24	4.06	11.26	3xM16	1.69	2.24	3xM16	3 x 5/8-11	110.23	3675-12"	7-814-1200
7-815-1600	3674-16"	15.75	4.13	4.48	0.20	12.99	5.35	14.25	3xM16	2.17	2.64	3xM16	3 x 5/8-11	187.39	3675-16"	7-814-1600
7-815-2000	3674-20"	19.69	4.69	5.11	0.20	16.54	7.48	18.03	6xM16	2.36	3.11	6xM16	6 x 5/8-11	319.67	3675-20"	7-814-2000
7-815-2500	3674-25"	24.80	5.08	5.52	0.28	21.46	9.92	23.07	6xM16	2.76	3.43	6xM16	6 x 5/8-11	551.16	3675-25"	7-814-2500