



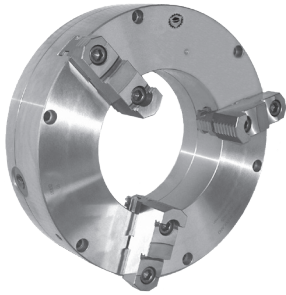
3-JAW SELF-CENTERING SCROLL CHUCKS



- EXTRA LARGE THROUGH-HOLE
- FORGED STEEL BODY

- 1
- 2
- 3
- 4
- 5

3597



Standard accessories



1 Set of hard top jaws



1 Set of soft top jaws

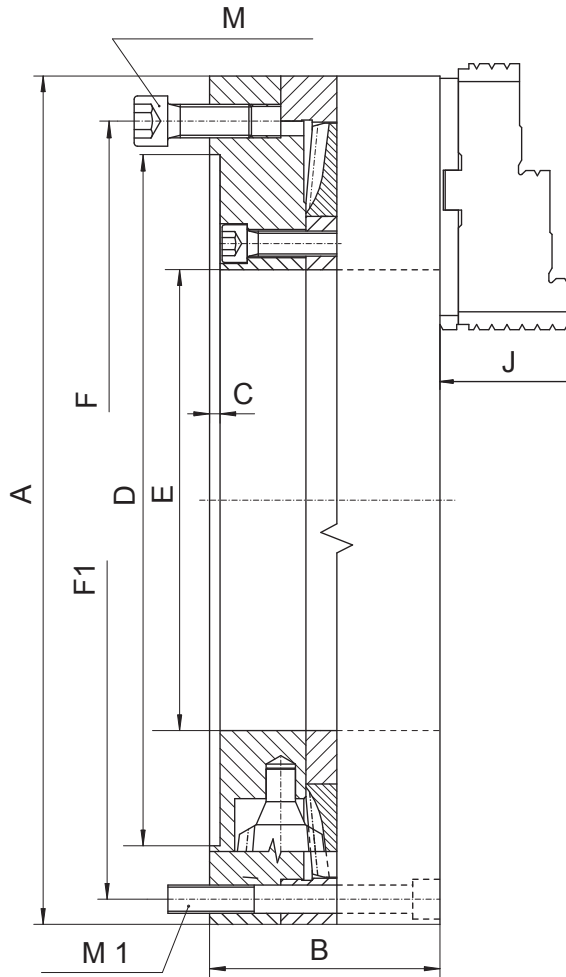


1 Set of hard master jaws



1 Wrench + 1 Hex key

¹⁾ Soft top jaws not included with 3597-12" and 3597-20"



- BISON OIL COUNTRY CHUCKS with large through-holes are designed for gripping long workpieces or pipes during machining
- Hardened and ground working surfaces
- Balanced scroll plate
- High gripping force
- High accuracy
- Chucks can work individually or in pairs, mounted on opposite sides of the lathe spindle

Code No.	Type	A [in]	B [in]	C [in]	D [in]	E [in]	F [in]	F1 [in]	J [in]	M	M1	Clamping range [in]	Max. rpm	Weight [lbs]
7-819-1200S	3597-12"	12.40	3.82	0.20	10.24	5.71	11.26	11.26	2.24	3xM16	3xM16	1.57 - 12.40	2,500	103.62
7-819-1600S	3597-16"	15.94	4.33	0.20	12.99	8.66	14.25	15.00	2.64	6xM16	6xM12	5.43 - 15.98	1,000	160.94
7-819-2000S	3597-20"	20.28	4.72	0.20	16.54	12.60	18.03	18.96	3.11	6xM16	6xM16	10.39 - 20.31	800	264.55
7-819-2600S	3597-26"	25.98	5.51	0.28	21.46	15.98	23.07	24.41	3.43	6xM16	6xM16	13.74 - 24.80	600	507.06