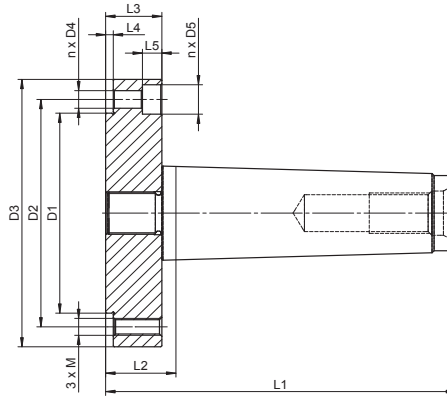


- 1
- 2
- 3
- 4
- 5

9156

DEAD

- Can replace typical center in machine tailstock
- Chuck not included, please select one of the matching types



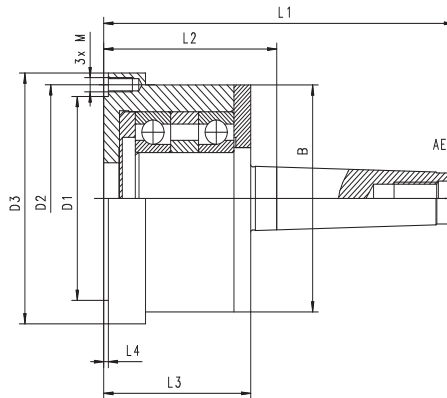
W - Chuck diameter

Code No.	Type	W* [in]	Morse Taper	D1 [in]	D2 [in]	D3 [in]	D4 [in]	D5 [in]	L1 [in]	L2 [in]	L3 [in]	L4 [in]	L5 [in]	M	n	Weight [lbs]
7-915-0302	9156-3"-2	3.15	2	2.20	2.64	3.23	0.25	0.43	3.50	0.98	0.63	0.10	0.28	M6	3	1.54
7-915-0303	9156-3"-3	3.15	3	2.20	2.64	3.23	0.25	0.43	4.02	0.83	0.63	0.10	0.28	M6	3	1.76
7-915-0402	9156-4"-2	3.94	2	2.76	3.27	4.02	0.33	0.55	3.50	0.98	0.63	0.10	0.35	M8	3	2.43
7-915-0403	9156-4"-3	3.94	3	2.76	3.27	4.02	0.33	0.55	4.02	0.83	0.63	0.10	0.35	M8	3	2.65
7-915-0405	9156-4"-5	3.94	5	2.76	3.27	4.02	-	-	6.02	0.93	0.67	0.10	-	M8	3	5.07
7-915-0503	9156-5"-3	4.92	3	3.74	4.25	5.00	0.33	0.55	4.57	1.38	1.02	0.14	0.35	M8	3	5.73
7-915-0504	9156-5"-4	4.92	4	3.74	4.25	5.00	0.33	0.55	5.31	1.28	1.02	0.14	0.35	M8	3	6.17
7-915-0505	9156-5"-5	4.92	5	3.74	4.25	5.00	0.33	0.55	6.38	1.28	1.02	0.14	0.35	M8	3	7.94
7-915-0603	9156-6"-3	6.30	3	4.92	5.51	6.38	0.41	0.67	4.57	1.38	1.02	0.14	0.43	M10	3	9.04
7-915-0604	9156-6"-4	6.30	4	4.92	5.51	6.38	0.41	0.67	5.31	1.28	1.02	0.14	0.43	M10	3	9.48
7-915-0605	9156-6"-5	6.30	5	4.92	5.51	6.38	0.41	0.67	6.38	1.28	1.02	0.14	0.43	M10	3	11.24
7-915-0805	9156-8"-5	7.87	5	6.30	6.93	7.87	0.41	0.71	7.60	2.50	1.02	0.14	0.43	M10	3	18.08
7-915-0806	9156-8"-6	7.87	6	6.30	6.93	7.87	0.41	0.71	8.50	1.34	1.02	0.14	0.43	M10	3	21.38
7-915-1005	9156-10"-5	9.84	5	7.87	8.82	9.84	0.53	0.79	6.42	1.36	1.10	0.14	0.51	M12	6	23.81
7-915-1006	9156-10"-6	9.84	6	7.87	8.82	9.84	0.53	0.79	8.58	1.42	1.10	0.14	0.51	M12	6	30.20

9157

ROTATING

- Can replace typical center in machine tailstock
- Chuck not included, please select one of the matching types



W - Chuck diameter

Code No.	Type	W* [in]	Morse Taper	D1 [in]	D2 [in]	D3 [in]	B [in]	L1 [in]	L2 [in]	L3 [in]	L4 [in]	M	Weight [lbs]
7-573-032	9157-3"-2	3.15	2	2.20	2.64	3.07	-	4.69	2.17	1.97	0.10	M6	3.09
7-573-033	9157-3"-3	3.15	3	2.20	2.64	3.07	-	5.35	2.07	1.97	0.10	M6	3.31
7-573-043	9157-4"-3	3.94	3	2.76	3.27	3.86	-	6.18	2.99	2.80	0.10	M8	7.50
7-573-044	9157-4"-4	3.94	4	2.76	3.27	3.86	-	7.01	2.97	2.80	0.10	M8	8.38
7-573-054	9157-5"-4	4.92	4	3.74	4.25	4.84	-	7.19	3.15	2.89	0.14	M8	12.79
7-573-055	9157-5"-5	4.92	5	3.74	4.25	4.84	-	8.25	3.15	2.89	0.14	M8	7.94
7-573-064	9157-6"-4	6.30	4	4.92	5.51	6.30	4.33	7.32	3.29	3.03	0.14	M10	14.55
7-573-065	9157-6"-5	6.30	5	4.92	5.51	6.30	4.33	8.39	3.29	3.03	0.14	M10	16.53
7-573-085	9157-8"-5	7.87	5	6.30	6.93	7.87	5.12	8.39	3.29	3.03	0.14	M10	22.05
7-573-086	9157-8"-6	7.87	6	6.30	6.93	7.87	6.30	11.38	4.21	3.86	0.14	M10	40.34
7-573-105	9157-10"-5	9.84	5	7.87	8.82	9.84	5.12	8.39	3.29	3.03	0.18	M12	30.20
7-573-106	9157-10"-6	9.84	6	7.87	8.82	9.84	6.30	11.38	4.21	3.86	0.18	M12	49.60

PLEASE SELECT AN APPROPRIATE CHUCK

Type 3574

Type 3575

Type 3274

Type 3275

Type 3774

Type 3775

Type 3674

Type 3675

PLEASE SELECT AN APPROPRIATE CHUCK

Type 3574

Type 3575

Type 3274

Type 3275

Type 3774

Type 3775

Type 3674

Type 3675