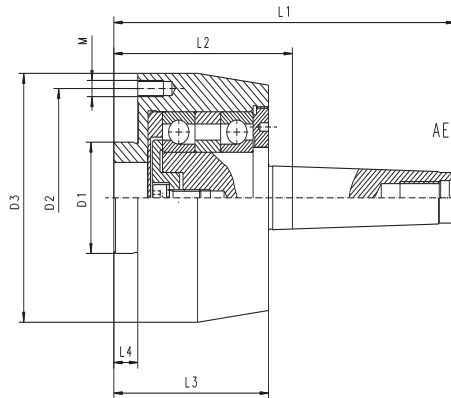


- ROTATING FOR SET-TRU CHUCKS OR INDEPENDENT CHUCKS

- 1
- 2
- 3
- 4
- 5



9167

ROTATING WITH FINE ADJUSTMENT

- Can replace typical center in machine tailstock
- Chuck not included, please select one of the matching types

PLEASE SELECT AN APPROPRIATE CHUCK



Type 3564

3-JAW



Type 3565



Type 3864

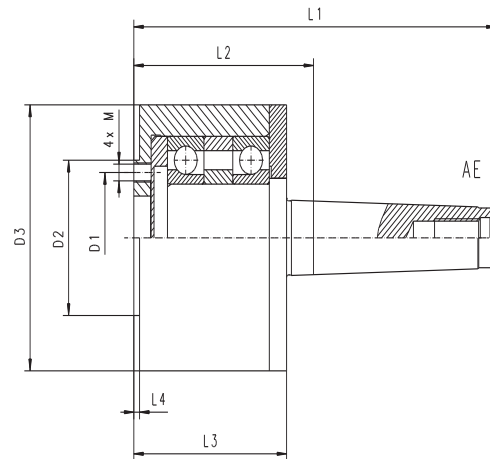
6-JAW



Type 3865

W - Chuck diameter

Code No.	Type	W* [in]	Morse Taper	D1 [in]	D2 [in]	D3 [in]	L1 [in]	L2 [in]	L3 [in]	L4 [in]	M	Weight [lbs]
7-861-9400	9167-4"-3	3.94	3	1.77	3.27	3.86	6.50	3.31	3.11	0.47	3xM8	7.50
7-861-9404	9167-4"-4	3.94	4	1.77	3.27	3.86	7.40	3.37	3.11	0.47	3xM8	8.16
7-861-9500	9167-5"-4	4.92	4	2.17	4.25	4.84	7.85	3.82	3.56	0.55	3xM8	13.89
7-861-9505	9167-5"-5	4.92	5	2.17	4.25	4.84	8.92	3.82	3.56	0.55	3xM8	15.43
7-861-9600	9167-6"-5	6.30	5	3.39	5.51	6.30	9.06	3.96	3.70	0.63	3xM10	24.69



4957

ROTATING

- Can replace typical center in machine tailstock
- Chuck not included, please select one of the matching types

PLEASE SELECT AN APPROPRIATE CHUCK



Type 4306

STEEL

W - Chuck diameter

Code No.	Type	W* [in]	Morse Taper	D1 [in]	D2 [in]	D3 [in]	L1 [in]	L2 [in]	L3 [in]	L4 [in]	M	Weight [lbs]
7-576-044	4957-4"-4	3.94	4	2.13	3.13	3.86	7.01	2.97	2.81	0.14	M8	8.38
7-576-054	4957-5"-4	4.92	4	2.13	2.75	4.53	7.01	2.97	2.81	0.14	M8	8.38
7-576-064	4957-6"-4	6.30	4	2.75	3.25	4.53	7.76	3.72	3.46	0.14	M10	13.45
7-576-065	4957-6"-5	6.30	5	2.75	3.25	4.53	8.82	3.72	3.46	0.14	M10	15.21
7-576-066	4957-6"-6	6.30	6	2.75	3.25	6.14	11.42	4.25	3.94	0.14	M10	36.38