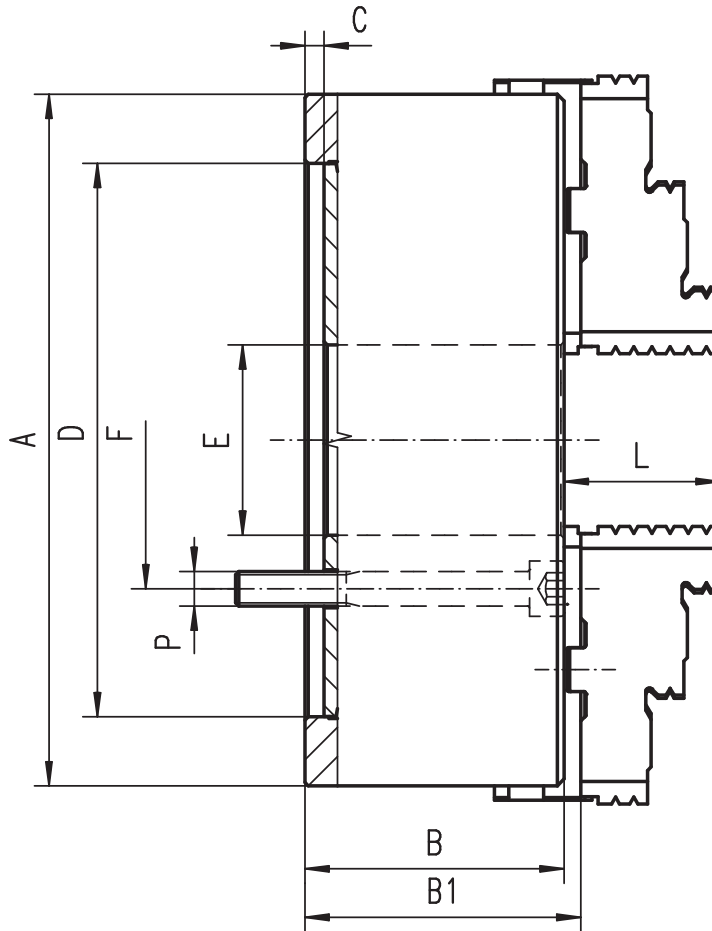



- CAST IRON BODY WITH 3 JAWS
- PLAIN BACK MOUNT WITH OPTIONAL ADAPTER PLATE




- Ground working surfaces
- Chucks above $\varnothing 40$ " have additional T-slots


3205




Standard accessories



1 Set of hard top jaws



1 Set of hard master jaws



1 Wrench

Code No.	Type	Ø A [in]	B [in]	B1 [in]	C [in]	D H7 [in]	E [in]	F [in]	P	L [in]	Weight [lbs]	Taper Size (optional)		
7-800-3200S	3205-32"-12.5"	31.50	5.51	5.96	0.47	17.72	12.50	14.5	6xM24	3.43	848	8	11	15
7-800-3200	3205-32"-10.5"	31.50	5.51	5.96	0.47	17.72	10.51	14.5	6xM24	3.43	848	8	11	15
7-800-4000	3205-40"	39.37	6.73	7.08	0.47	20.47	16.06	18.25	6xM24	3.92	1,521	11	15	20
7-800-4900	3205-49"	49.21	6.89	7.24	0.47	28.35	22.76	25.50	6xM30	3.92	2,755	15	20	28
7-800-5500	3205-55"	55.12	7.28	7.63	0.47	28.35	22.76	25.50	6xM30	3.92	3,527	15	20	28
7-800-6300	3205-63"	62.99	7.48	7.87	0.47	28.35	22.76	25.50	6xM30	4.02	4,409	20	28	
7-800-7100	3205-71"	70.87	7.87	8.26	0.47	28.35	22.76	25.50	6xM30	4.02	6,613	20	28	
7-800-7900	3205-79"	78.74	8.27	8.65	0.47	28.35	22.76	25.50	6xM30	4.02	8,818	20	28	