

- PLAIN BACK MOUNT
- CAST IRON BODY

3204



Standard accessories



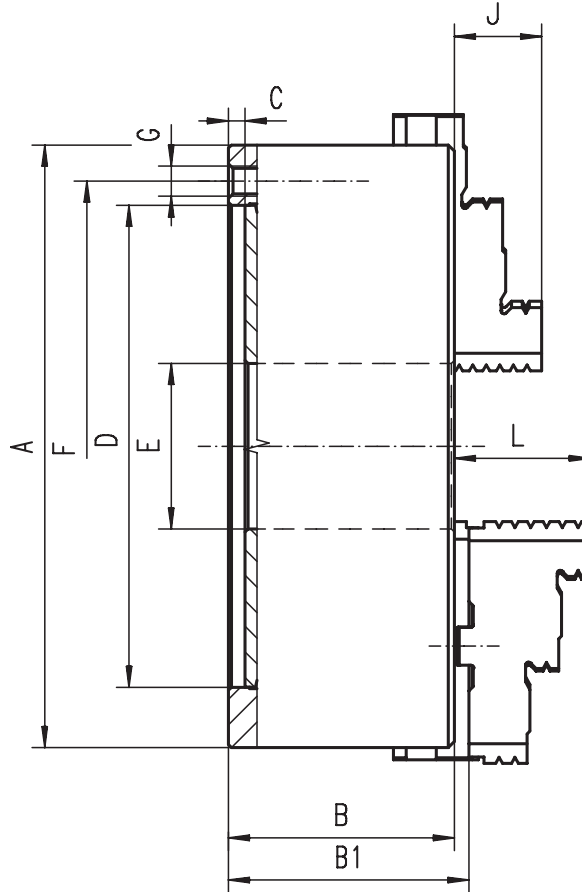
1 Set of hard solid ID jaws



1 Set of hard solid OD jaws



1 Wrench + 1 Hex key



■ Ground working surfaces

3205



Standard accessories



1 Set of hard top jaws



1 Set of hard master jaws



1 Wrench + 1 Hex key

Code No.	Type	A [in]	B [in]	B1 [in]	C [in]	D H7 [in]	E [in]	F [in]	G	J [in]	L [in]	Weight [lbs]	Type	Code No.
7-810-0300	3204-3"	3.15	1.73	-	0.12	2.20	0.63	2.64	3xM6	0.51	-	3.31	-	-
7-810-0400	3204-4"	3.94	1.97	-	0.12	2.76	0.79	3.27	3xM8	0.63	-	6.17	-	-
7-810-0500	3204-5"	4.92	2.20	2.39	0.16	3.74	1.26	4.25	3xM8	0.79	1.57	11.02	3205-5"	7-800-0500
7-810-0600	3204-6"	6.30	2.54	2.73	0.16	4.92	1.65	5.51	6xM10	1.26	1.69	22.05	3205-6"	7-800-0600
7-810-0800	3204-8"	7.87	2.95	3.14	0.16	6.30	2.17	6.93	6xM10	1.14	1.77	38.58	3205-8"	7-800-0800
7-810-1000	3204-10"	9.84	3.35	3.50	0.20	7.87	2.99	8.82	6xM12	1.34	2.09	63.93	3205-10"	7-800-1000
7-810-1200	3204-12"	12.40	3.70	3.90	0.20	10.24	4.06	11.26	6xM16	1.69	2.24	110.23	3205-12"	7-800-1200
7-810-1600	3204-16"	15.75	4.13	4.48	0.20	12.99	5.35	14.25	6xM16	2.17	2.64	187.39	3205-16"	7-800-1600
7-810-2000	3204-20"	19.69	4.72	5.15	0.20	16.54	7.48	18.03	6xM16	2.36	3.11	319.67	3205-20"	7-800-2000
7-810-2500	3204-25"	24.80	5.31	5.76	0.28	21.46	9.92	23.07	6xM16	2.76	3.43	551.16	3205-25"	7-800-2500