

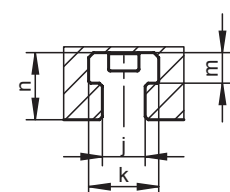
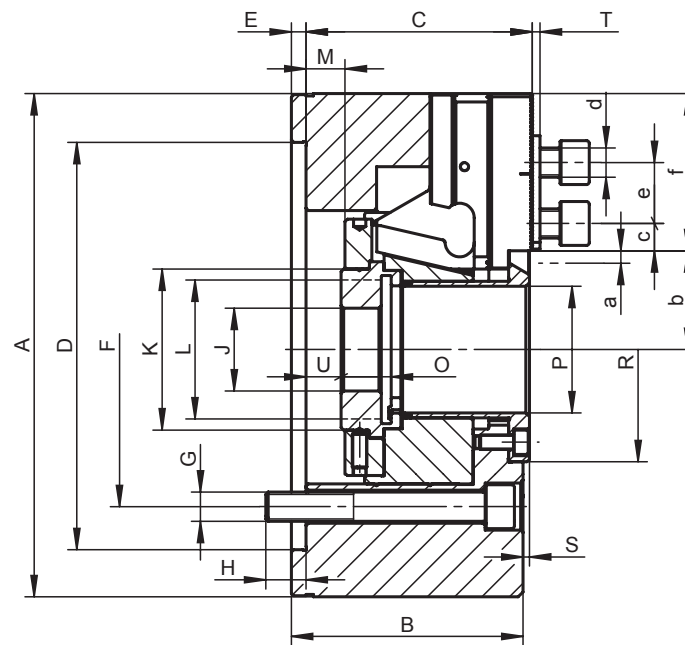
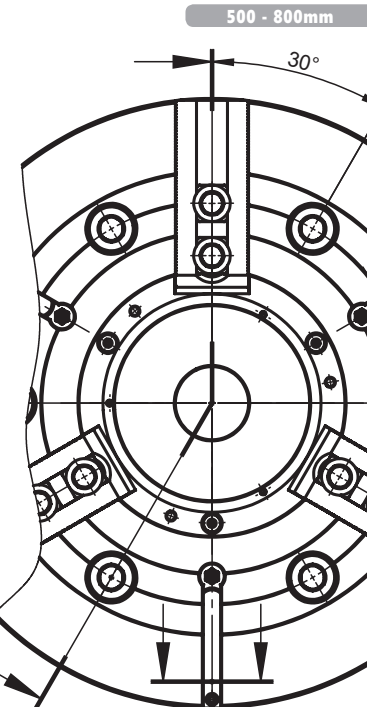
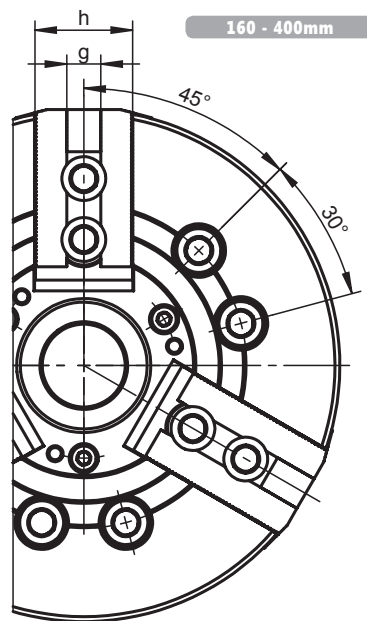
1
2
3
4
5
6



2405



- Manufactured from high grade alloy steel which extends machine life while providing higher rigidity and greater wear resistance
- The drawbar design results in its rigid structure and enables direct power transmission to the master jaws in direct area of jaw guideways – effective counteracting of the loss of gripping force and resulting in high power transmission efficiency
- Hardened and ground working surfaces ensure longer life with maintained accuracy and repeatability
- Master jaws secured against throw-off
- Master jaws lubricated directly
- Unbalance G 6.3
- Chucks with Ø 500mm and greater are equipped with T-slots



- Standard Accessories
- Mounting screws for chuck and jaw, T-nuts
 - Eye bolt (for Ø >200mm)

2405

Code No.	7-771-0600	7-771-0800	7-771-1000	7-771-1200	7-771-1600	7-771-2000	7-771-2500	7-771-3200
Type	2405-160-45	2405-200-52	2405-250-75	2405-315-91	2405-400-120	2405-500-160	2405-630-200	2405-800-255
A [mm]	169	210	254	315	400	500	630	800
B [mm]	81	95	106	108	130	127	160	160
C [mm]	79	93	104	106.5	126.5	127	158	158
Mounting D H6 [mm]	140	170	220	220	300	380	520	520
E [mm]	6	6	6	6	6	6	8	8
F [mm]	104.8	133.4	171.4	171.4	235.0	330.2	463.6	463.6
G [mm]	6 x M10	6 x M12	6 x M16	6 x M16	6 x M20	6 x M24	6 x M24	6 x M24
H [mm]	13.5	16.5	18	27	28	35	34	34
J [mm]	20	20	25	25	60	60	60	60
K [mm]	60	66	94	108	140	182	230	284
L max. [mm]	M55 x 2.0	M60 x 2.0	M85 x 2.0	M100 x 2.0	M130 x 2.5	M170 x 3.0	M200 x 3.0	M250 x 3.0
Max. drawbar stroke M [mm]	16 (13/-3)	22.5 (16/-6.5)	27 (19.5/-7.5)	27 (23/-4)	34 (23/-11)	34.5 (16.8/-17.7)	44 (44/0)	44 (44/0)
O [mm]	19	20.5	25	28	39	43	46	46
P [mm]	45	52	75	91	120	160	200	255
R [mm]	70	92	117	134	164	220	275	330
S [mm]	2.6	2.6	2.6	0.6	0.5	3.0	4.1	4.1
T [mm]	3	3.5	3.5	3.5	4	4	4	4
U min. [mm]	-5	-8	-18.5	-19	-23.0	-32.5	-22.0	-22.0
U max. [mm]	11	14.5	8.5	8	11.0	2.0	22.0	22.0
Jaw stroke a [mm]	3.5	5	6	6	7.85	8	10	10
Serration [in]	1/16"x90°	1/16"x90°	1/16"x90°	1/16"x90°	3/32"x90°	3/32"x90°	3/32"x90°	3/32"x90°
b min. [mm]	30.2	35.5	47.9	56.9	74.65	97	134	162
b max. [mm]	33.7	40.5	53.9	62.9	82.5	105	144	172
c min. [mm]	9	9.5	12.4	12.5	15	16	16	16
c max. [mm]	25	33	41	55	58	86	116	166
d [mm]	M12	M12	M16	M16	M20	M20	M20	M20
e [mm]	24	24.5	32	32	43	43	43	43
f [mm]	51	64.5	73	94	115	143.5	170	225
g H7 [mm]	17	17	21	21	25.5	25.5	25.5	25.5
h [mm]	38	40	45	52	60	60	70	70
j [mm]	-	-	-	-	-	14	22	22
k [mm]	-	-	-	-	-	23	37	37
m [mm]	-	-	-	-	-	10	16	16
n [mm]	-	-	-	-	-	21	35	35
p [mm]	-	-	-	-	-	87	100	160
Max. pulling force [kN]	22	34	43	56	71	90	100	100
Max. clamping force [kN]	57	86	111	144	180	200	200	200
Max. speed [rpm]	6,000	5,000	4,200	3,300	2,500	1,600	1,200	800
Moment of inertia [kgm ²]	0.057	0.15	0.31	0.73	2.15	5	16	48
Weight without top jaws [lbs]	26.46	50.71	83.78	132.28	257.94	365.97	705.48	1,179.47

Larger sizes available upon request!