

1  
2  
3  
4  
5  
6

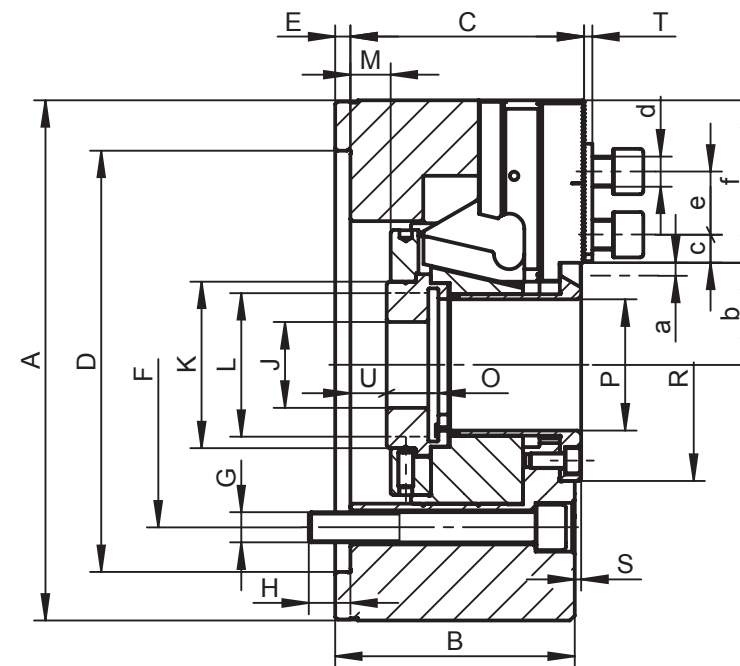
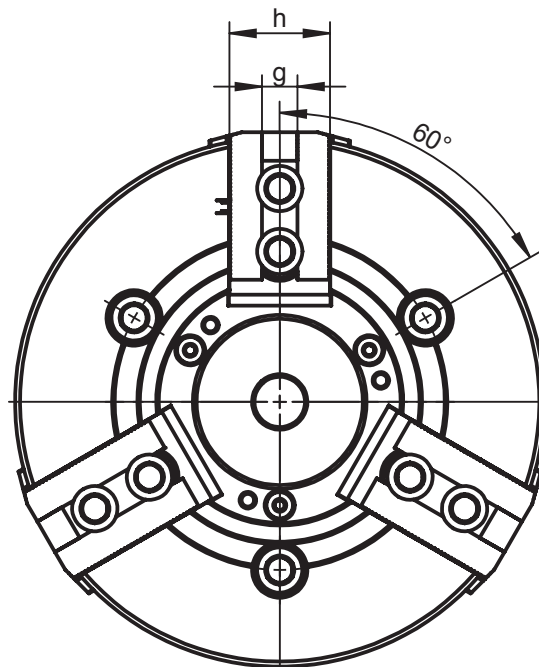


**2405 ZW**

LARGE THROUGH-HOLE



- Manufactured from high grade alloy steel which extends machine life while providing higher rigidity and greater wear resistance
- The drawbar design results in its rigid structure and enables direct power transmission to the master jaws in direct area of jaw guideways – effective counteracting of the loss of gripping force and resulting in high power transmission efficiency
- Hardened and ground working surfaces ensure longer life with maintained accuracy and repeatability
- Master jaws secured against throw-off
- Master jaws lubricated directly
- Unbalance G 6.3
- Chucks with Ø 500mm and greater are equipped with T-slots



Standard Accessories

Mounting screws for chuck and jaw, T-nuts

Eye bolt (for Ø >200mm)

2405 ZW



Type of mounting



Number of jaws



Serration

Code No.	7-771-0660	7-771-0880	7-771-1010	7-771-1220
Type	2405-160-53	2405-200-66	2405-250-81	2405-315-110
A [mm]	169	210	254	315
B [mm]	81	95	106	108
C [mm]	79	93	104	106.5
Mounting D H6 [mm]	140	170	220	300
E [mm]	6	6	6	6
F [mm]	104.8	133.4	171.4	235
G [mm]	3 x M10	3 x M12	3 x M16	3 x M20
H [mm]	13.5	16.5	18	29
J [mm]	20	20	25	25
K [mm]	68	86	96	130
L max. [mm]	M62 x 2	M75 x 2	M90 x 2	M120 x 2
Max. drawbar stroke M [mm]	16 (13/-3)	22.5 (16/-6.5)	27 (19.5/-7.5)	27 (23/-4)t
O [mm]	19	20.5	25	28
P [mm]	53	66	81	110
R [mm]	78	98	123	154
S [mm]	2.6	2.6	2.6	0.6
T [mm]	3	3.5	3.5	3.5
U min. [mm]	-5	-8	-18.5	-19
U max. [mm]	11	14.5	8.5	8
Jaw stroke a [mm]	3.5	5	6	6
Serration [in]	1/16"x90°	1/16"x90°	1/16"x90°	1/16"x90°
b min. [mm]	34	43.5	50	67
b max. [mm]	37.5	48.5	56	73
c min. [mm]	9	9.5	12.4	12.5
c max. [mm]	20	29	41	50
d [mm]	M12	M12	M16	M16
e [mm]	24	24.5	32	32
f [mm]	47.5	58.5	73	85
g H7 [mm]	17	17	21	21
h [mm]	38	40	45	52
Max. pulling force [kN]	22	34	43	56
Max. clamping force [kN]	57	86	111	144
Max. speed [rpm]	6,000	5,000	4,200	3,300
Moment of inertia [kgm <sup>2</sup> ]	0.057	0.15	0.31	0.73
Weight without top jaws [lbs]	26.46	46.30	73.85	121.25

Larger sizes available upon request!