

1  
2  
3  
4  
5  
6

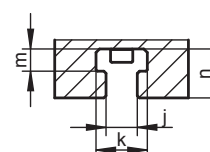
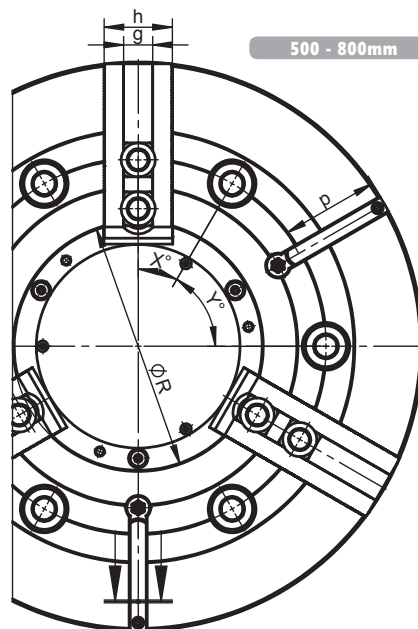
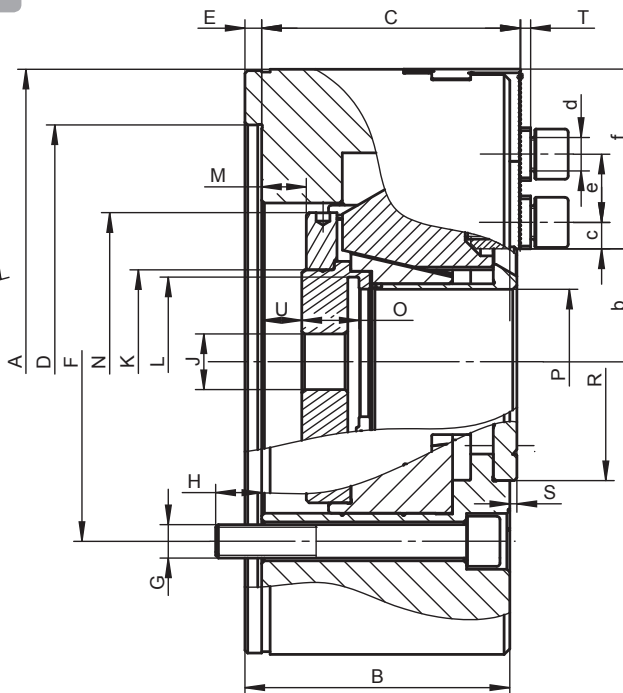
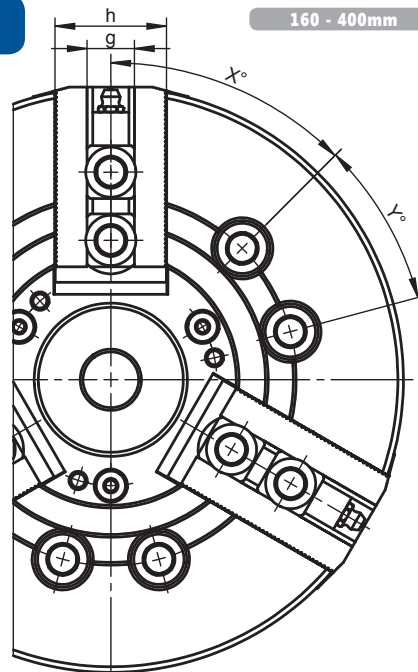


# 2405-A

INTERCHANGEABLE WITH  
SMW-AUTOBLOK TYPE BH-D



- Manufactured from high grade alloy steel which extends machine life while providing higher rigidity and greater wear resistance
- The drawbar design results in its rigid structure and enables direct power transmission to the master jaws in direct area of jaw guideways – effective counteracting of the loss of gripping force and resulting in high power transmission efficiency
- Hardened and ground working surfaces ensure longer life with maintained accuracy and repeatability
- Master jaws secured against throw-off
- Master jaws lubricated directly
- Unbalance G 6.3
- Chucks with Ø 500mm and greater are equipped with T-slots



Standard Accessories

- Hard and Soft Top Jaws
- T-nuts interchangeable with SMW-Autoblok
- Mounting screws for chuck and jaws
- Eye bolt (for Ø >200mm)

2405-A

Code No.	7-761-0600	7-761-0800	7-761-1000	7-761-1200	7-761-1600	7-761-2000	7-761-2500	7-761-3200
Type	2405-160-45A	2405-200-52A	2405-250-75A	2405-315-95A	2405-400-120A	2405-500-160A	2405-630-200A	2405-800-255A
A [mm]	169	210	254	315	400	500	630	800
B [mm]	81	95	106	108	130	127	160	160
C [mm]	79	93	104	106	126.5	127	158	158
Mounting D [mm]	140	170	220	300	300	380	520	520
E [mm]	6	6	6	6	6	6	8	8
F [mm]	104.8	133.4	171.4	235	235	330.2	463.6	463.6
G [mm]	6 x M10	6 x M12	6 x M16	6 x M20	6 x M20	6 x M24	6 x M24	6 x M24
H [mm]	13.5	16.5	18	25	28	35	34	34
J min. [mm]	20	20	25	25	60	60	60	60
K [mm]	60	66	94	111	140	182	230	284
L max. [mm]	M55 x 2	M60 x 2	M85 x 2	M102 x 2	M130 x 2.5	M170 x 3	M200 x 3	M250 x 3
Max. drawbar stroke M [mm]	16 (13/-3)	22.5 (16/-6.5)	27 (19.5/-7.5)	27 (23/-4)	34 (23/-11)	34.5 (16.8/-17.7)	44 (44/0)	44 (44/0)
N [mm]	91	107	142	155	192	244	325	380
O [mm]	19	20.5	25	28	39	43	46	46
P [mm]	45	52	75	95	120	160	200	255
R [mm]	70	92	117	138	164	220	275	330
S [mm]	2.6	2.6	2.6	0.6	0.5	4.1	4.1	4.1
T [mm]	3	3.5	3.5	3.5	4	4	4	4
U [mm]	11/-5	14.5/-8	8.5/-18.5	8/-19.5	11/-23	10/-24.5	22/-22	22/-22
X [mm]	45°	45°	45°	30°	45°	30°	30°	30°
Y [mm]	30°	30°	30°	60°	30°	60°	60°	60°
Jaw stroke a [mm]	3.5	5	6	6	7.85	8	10	10
Serration [in]	1/16"x90°	1/16"x90°	1/16"x90°	1/16"x90°	3/32"x90°	3/32"x90°	3/32"x90°	3/32"x90°
b min./max. [mm]	30.2/33.7	35.5/40.5	47.9/53.9	58.9/64.9	74.7/82.5	97/105	134/144	162/172
c min./max. [mm]	9/25	9.5/33	12.4/41	12.5/50	15/58	16/86	16/116	16/166
d [mm]	M10	M12	M16	M16	M20	M20	M20	M20
e [mm]	24	24.5	32	32	43	43	43	43
f [mm]	51	64.5	73	94	115	143.5	170	225
g [mm]	17/14	17	21	21	25.5	25.5	25.5	25.5
h [mm]	38	40	45	52	60	60	70	70
j [mm]	-	-	-	-	-	14	22	22
k [mm]	-	-	-	-	-	23	37	37
m [mm]	-	-	-	-	-	10	16	16
n [mm]	-	-	-	-	-	21	35	35
p [mm]	-	-	-	-	-	87	100	160
Max. pulling force [kN]	22	34	43	56	71	90	100	100
Max. clamping force [kN]	57	86	111	144	180	200	200	200
Max. speed [rpm]	6,000	5,000	4,200	3,300	2,500	1,600	1,200	800
Moment of inertia [kgm2]	0.057	0.15	0.31	0.73	2.15	5.7	17.7	47.6
Weight without top jaws [lbs]	26.46	48.50	77.16	119.49	241.41	367.07	706.58	1,183.88

Larger sizes available upon request!