

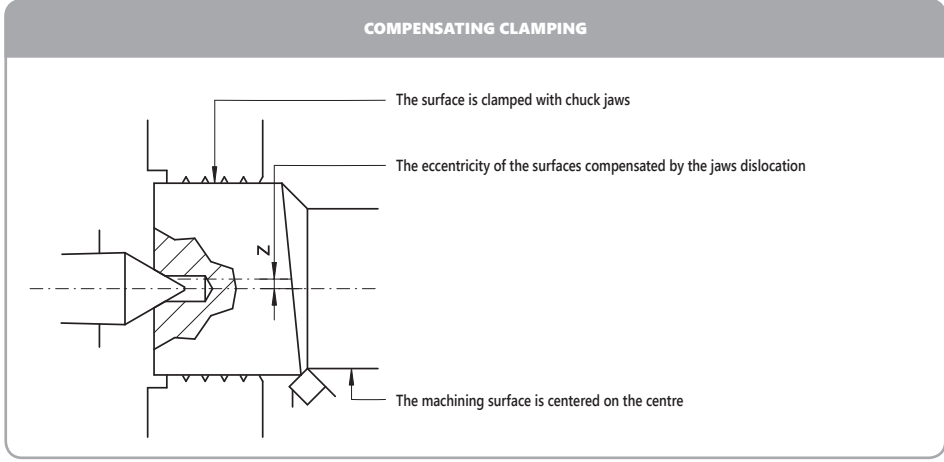
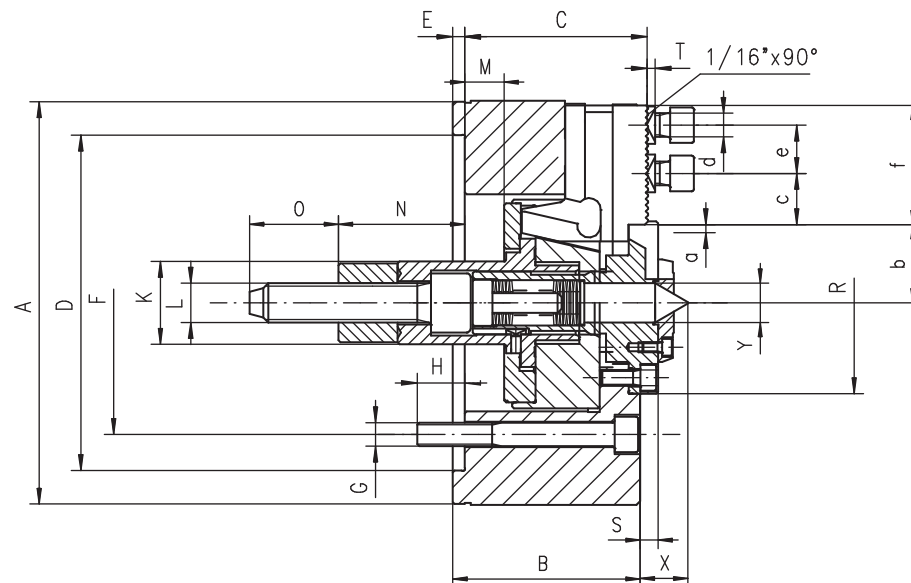
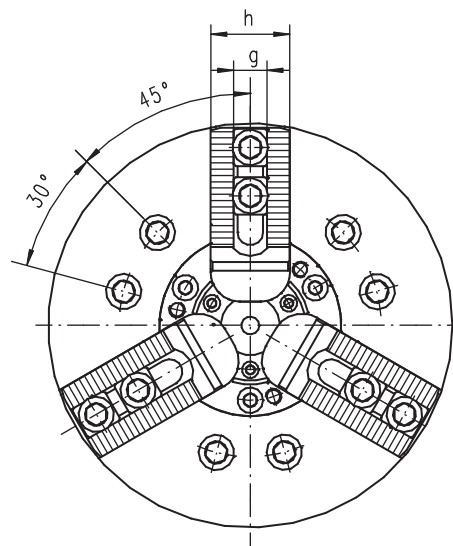
1  
2  
3  
4  
5  
6



**2488**



- Compensation of the eccentricity of the workpiece (see page 192)
- Power transmission wedge system
- High load carrying capacity
- Prolonged durability for sustained performance
- Manufactured from high grade alloy steel which extends machine life while providing higher rigidity and greater wear resistance
- Hardened and ground working surfaces ensure longer life with maintained high accuracy and repeatability
- Master jaws secured against throw-off
- Master jaws lubricated directly
- Unbalance G 6.3



2488

Code No.	7-752-0600	7-752-0800	7-752-1000	7-752-1200
Type	2488-160	2488-200	2488-250	2488-315
A [mm]	169	210	254	315
B [mm]	81	95	106	108
C [mm]	59.5	93	104	106.5
Mounting D H6 [mm]	140	170	220	220
E [mm]	6	6	6	6
F [mm]	104.8	133.4	171.4	171.4
G [mm]	6xM10	6xM12	6xM16	6xM16
H [mm]	13.5	16.5	18	27
K [mm]	38	42	46	46
L [mm]	M16	M20	M24	M24
Max. drawbar stroke M [mm]	16 (13/-3)	22.5 (16/-6.5)	27 (19.5/-7.5)	27 (23/-4)
N [mm]	60	64	91	91
O [mm]	40	45	55	55
R [mm]	70	92	117	134
S [mm]	8	9	7.6	5.6
T [mm]	3	3.5	3.5	3.5
X [mm]	24	24	26.6	26.6
Y [mm]	17	20	25	29
Jaw stroke a [mm]	3.5	5	6	6
b max [mm]	33.7	40.5	53.9	62.9
c min [mm]	9	9.5	12.4	12.5
c max [mm]	25	33	41	55
d [mm]	M12	M12	M16	M16
e [mm]	24	24.5	32	32
f [mm]	51	64.5	73	94
g H7 [mm]	17	17	21	21
h [mm]	38	40	45	52
Serration [in]	1/16"x90°	1/16"x90°	1/16"x90°	1/16"x90°
Max. pulling force [kN]	20	30	40	55
Max. clamping force [kN]	50	72	100	120
Max. speed [rpm]	3,500	3,200	3,000	2,300
Max. compensation on ø z [mm]	3	3	4	4
Moment of inertia [kgm <sup>2</sup> ]	0.1	0.3	0.7	1
Weight without top jaws [lbs]	33.07	55.12	90.39	138.89

- 1
- 2
- 3
- 4
- 5
- 6

2488