

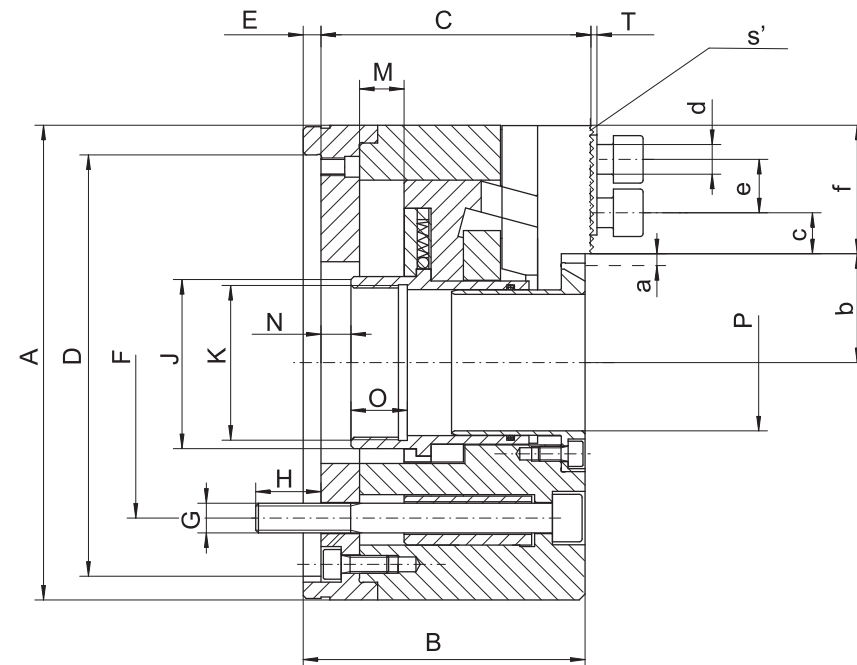
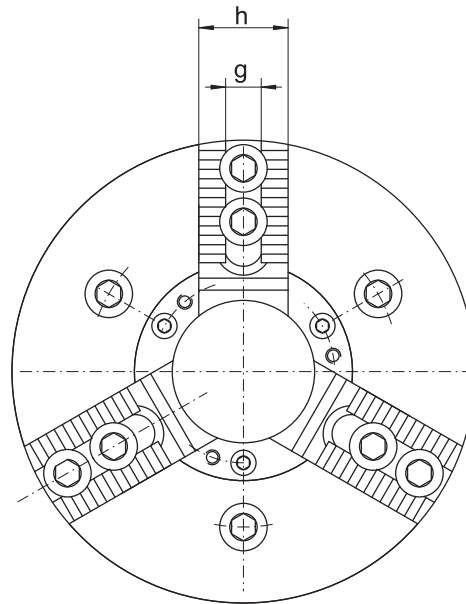
1  
2  
3  
4  
5  
6



**2409**



- Manufactured from high grade alloy steel which extends machine life while providing higher rigidity and greater wear resistance
- The drawbar design results in its rigid structure and enables direct power transmission to the master jaws in direct area of jaw guideways – effective counteracting of the loss of gripping force and resulting in high power transmission efficiency
- Hardened and ground working surfaces ensure longer life with maintained accuracy and repeatability
- Large through-hole works well with high rotational speeds
- Master jaws secured against throw-off
- Master jaws lubricated directly
- Unbalance G 6.3



2409

Code No.	7-741-0500	7-741-0600	7-741-0800	7-741-1000	7-741-1200
Type	2409-130-32	2409-160-46	2409-200-66	2409-250-91	2409-315-91
A [mm]	130	160	200	250	315
B [mm]	80	95	102	118	118
C [mm]	75.5	91	98	114	114
Mounting D H6 [mm]	100	140	170	220	220
E [mm]	6	6	6	6	6
F [mm]	82.6	104.8	133.4	171.4	171.4
G [mm]	3 x M10	3 x M10	3 x M12	3 x M16	3 x M16
H [mm]	22	22	17	25.5	25.5
J [mm]	43	58	80	107	107
K [mm]	M38 x 1.5	M52 x 1.5	M75 x 2.0	M100 x 2	M100 x 2
Max. drawbar stroke M [mm]	12	15	17	20.5	20.5
N [mm]	18.5	10	9.5	10.5	10.5
O [mm]	14	19	20	28	28
P H7 [mm]	32	46	66	91	91
T [mm]	2.5	2.5	3.5	3.5	3.5
Jaw stroke a [mm]	3.2	3.5	4	5	5
b min. [mm]	16	33.5	42.5	57.5	57.5
b max. [mm]	19	37	46.5	62.5	62.5
c min. [mm]	0	7.5	9.2	10.8	10.2
c max. [mm]	23.5	23.5	31.5	31.5	61
d [mm]	9 x M6	6 x M10	6 x M12	6 x M12	6 x M12
E [mm]	12	18	24	24.5	24.5
f [mm]	47.5	45.8	57.2	62	94.5
g H7 [mm]	10	12	17	17	17
h [mm]	25	30	38	40	40
s' [in]	1/16"x90°	1/16"x90°	1/16"x90°	1/16"x90°	1/16"x90°
Max. swing of top jaws [mm]	170	204	258	311	376
Max. pulling force [kN]	25	25	35	50	60
Max. clamping force [kN]	55	55	85	120	140
Max. speed [rpm]	8,000	6,000	5,200	4,500	4,000
Moment of inertia [kgm <sup>2</sup> ]	0.015	0.05	0.1	0.3	0.74
Weight without top jaws [lbs]	17.64	26.46	44.09	68.34	108.03

- 1
- 2
- 3
- 4
- 5
- 6

2409