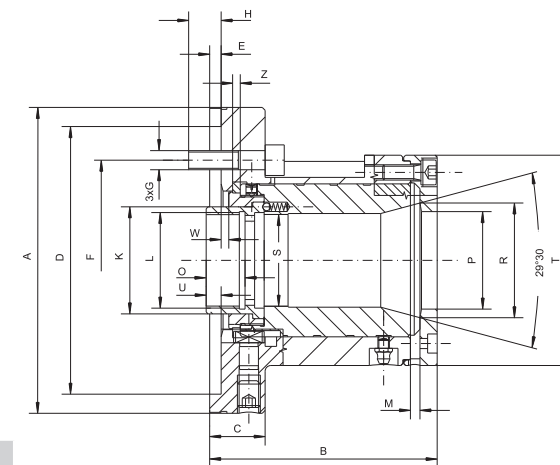


2905



- Mounting with 6 screws and Allen wrench
- Collet 173E for 2905-110-42
- Collet 185E for 2905-140-60
- Collet 193E for 2905-160-80
- Chucks are not equipped with collets



Code No.	Type	A	B	C	DH6	E	F	G	H	K	L	M	O	P	R	SH7	T	U	W	Z	Clamping range			Y*	RPM	Weight
		[mm]																			○	◇	□			
7-743-0400	2905-110-42	160	119	29	140	6	104.8	M10	17	59.5	M55x2.0	5	18	50.8	60	48	110	8.5	4.0	4	2 - 42	6 - 36	6 - 29	25	8,000	19.84
7-743-0500	2905-140-60	190	136	31	170	6	133.4	M12	20	79.0	M70x2.0	5	19	74.0	84	66	138	8.5	3.5	4	4 - 60	8 - 52	7 - 42	30	6,300	29.76
7-743-0600	2905-160-80	240	157	33	220	6	171.4	M16	23	100	M90x2.0	5	20	93.0	107	90	162	9.0	3.5	4	12 - 80	14 - 69	15 - 56	40	4,500	44.09

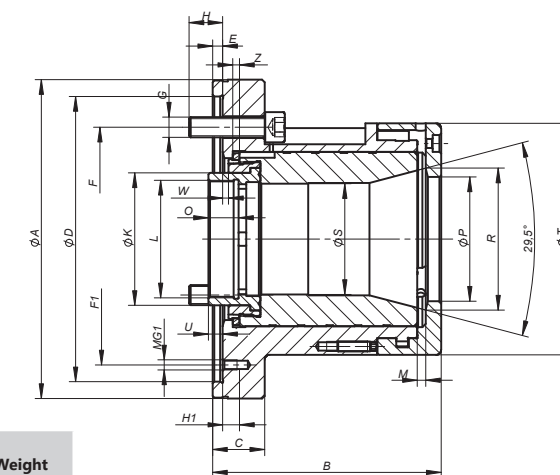
*Max. pulling force

Collets available on page 359-360

2905-S



- Quick mounting system (Bayonet type)
- Collet 173E for 2905-110-42-S
- Collet 185E for 2905-140-60-S
- Collet 193E for 2905-160-80-S
- Chucks are not equipped with collets



Code No.	Type	A	B	C	DH6	E	F	F1	G	G1	H	H1	K	L	M	O	P	R	SH7	T	U	W	Z	Clamping range			Y*	RPM	Weight
		[mm]																					○	◇	□	[kN]			
7-743-0400S	2905-110S-42	160	119	29	140	6	104.8	116	3xM10	3xM6	17	10	59.5	M55x2.0	5	18	50.8	60	48	110	8.5	4.0	4	2 - 42	6 - 36	6 - 29	25	8,000	20.94
7-743-0500S	2905-140S-60	190	136	31	170	6	133.4	150	3xM12	3xM6	20	10	79.0	M70x2.0	5	18	74.0	84	66	138	8.5	3.5	4	4 - 60	8 - 52	7 - 42	3.30	6,300	30.20
7-743-0600S	2905-160S-80	240	157	33	220	6	171.4	200	3xM16	3xM6	23	10	100	M90x2.0	5	20	93.0	107	90	162	9.0	3.5	4	12 - 80	14 - 69	15 - 56	40	4,500	46.30

*Max. pulling force

Collets available on page 359-360