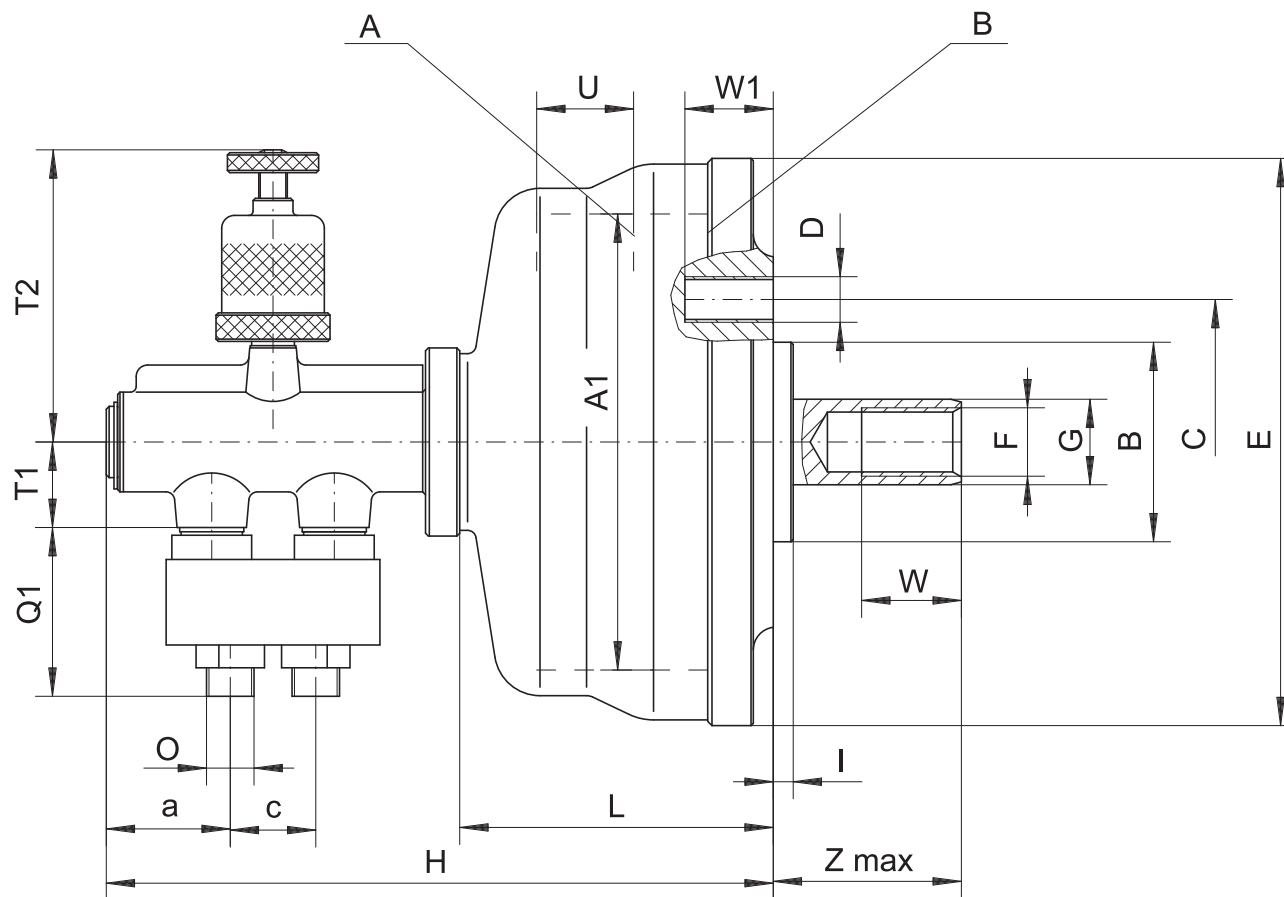


1202

- They are mainly used to drive the lathe chucks and special powered fixtures operating in a horizontal positioning system
- Powered by compressed air
- Max. operating pressure 0.63MPa
- Unbalance G 6.3



Code No.	7-794-206	7-794-208	7-794-210	7-794-212
Type	1202-160	1202-200	1202-250	1202-315
A1 Size [mm]	160	200	250	315
B2 h6 [mm]	70	95	130	160
C [mm]	100	144	180	230
D [mm]	4 x M16	6 x M16	6 x M16	6 x M16
E [mm]	199	239	289	354
F [mm]	M24	M27	M27	M27
G [mm]	30	35	35	35
H [mm]	234	234	234	234
I [mm]	7	7	7	7
L [mm]	110	110	110	110
O [in]	G 3/8"	G 3/8"	G 3/8"	G 3/8"
Q1 [mm]	59	59	59	59
T1 [mm]	30	30	30	30
T2 max. [mm]	120	120	120	120
U Stroke [mm]	34	34	34	34
W [mm]	35	35	35	35
W1 [mm]	31	31	31	31
Z max [mm]	66	66	66	66
a [mm]	45	45	45	45
c [mm]	27	27	27	27
Piston area	A [cm ²]	199.8	312.8	489.4
	B [cm ²]	193.8	304.3	481
Max. push force (p=7.0 MPa) [kN]	9.8	15.4	24.4	39.4
Max. pull force (p=7.0 MPa) [kN]	9.5	15	24	39
Air consumption per double stroke (p=0.1 MPa) [dm ³]	3	3.6	4	5
Max. speed [rpm]	3,000	2,500	2,200	1,700
Moment of inertia [kgm ²]	0.10	0.25	0.46	1.05
Weight [lbs]	20.28	29.32	39.68	54.01

1

2

3

4

5

6

1202