

6522
TWO-PIECE MACHINE VISE
Features:

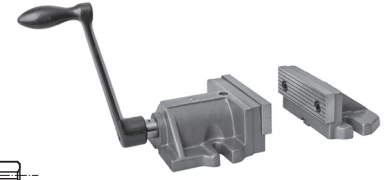
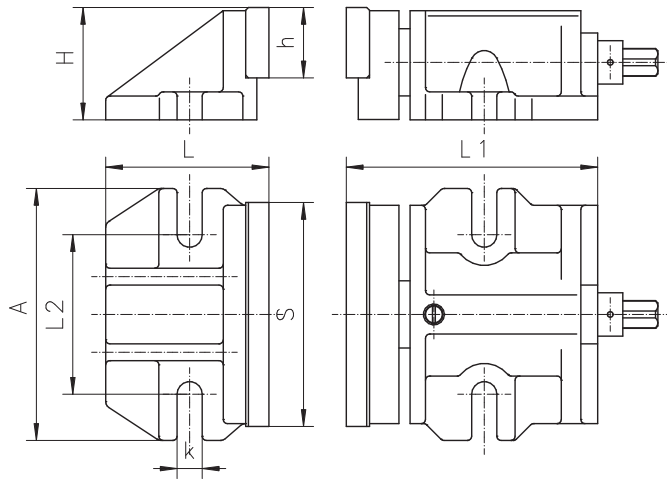
- Facilitates utilization of the full length of the machine bed
- Removable grooved jaw inserts are hardened and ground
- Clamp base body and rigid base are high-quality castings

Application:

- Designed for use where a large clamping force is required

Standard accessories:

- Handcrank
- Slot nuts



Accessories 19-31

Code No.	Type	S	A	H	L	L1	L2	h	k	Max. clamping force [daN]	Weight [lbs]
		[mm]									
7-255-006	6522-160	160	180	80	160	194	114	50	17	4,000	31.9
7-255-008	6522-200	200	196	100	172	258	130	63	17	5,000	57.6

6512
WITH MOVABLE REAR JAW
Features:

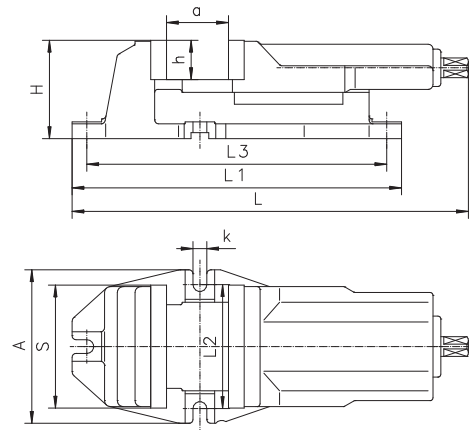
- Removable grooved jaw inserts are hardened and ground
- Lead screw protected against dirt and chips
- Body and movable jaw are high-quality castings

Application:

- Designed for use with milling machines, drill presses, etc.

Standard accessories:

- Handcrank
- Slot nuts



Matching swivel base



Type 6582 Page 19

Accessories 19-31

Code No.	Type	S	A	H	L	L1	L2	L3	a	h	k	Max. clamping force [daN]	Weight [lbs]
		[mm]											
7-222-005	6512-100	100	156	84	294	290	126	260	80	32	14	2,500	21.8
7-222-010	6512-125	125	156	100	347	335	126	305	95	40	14	3,500	35.0
7-222-015	6512-160	160	193	121	423	405	150	365	125	50	18	4,000	63.8
7-222-020	6512-200	200	256	147	515	500	210	460	160	63	18	5,500	123.2
7-222-025	6512-250	250	316	174	615	610	268	566	200	80	22	6,200	156.2