

WITH HYDRAULIC SPINDLE

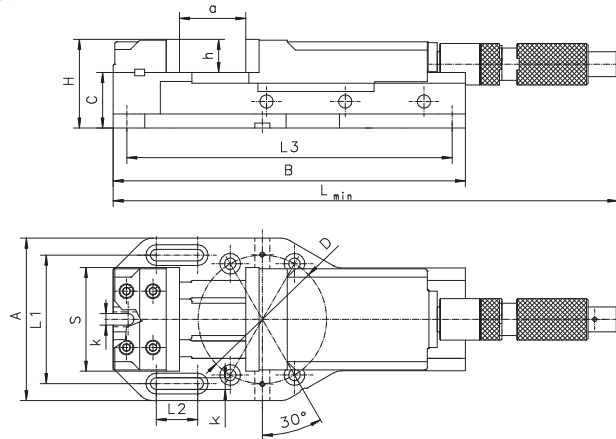
6516

Matching swivel base



Type 6585 Page 20

Accessories 19-31



Features:

- A unique, built-in hydraulic spindle makes operation of the vise easy
- Removable grooved jaw inserts are hardened and ground
- Easy adjusting of clamping range by means of 2 pins
- Sturdy, maintenance-free spindle
- Body and movable jaw are high-quality castings

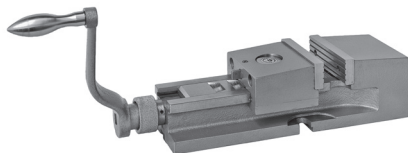
Application:

- These heavy duty machine vises are used in operations where a large clamping force is required

Standard accessories:

- Handcrank
- Slot nuts

Code No.	Type	S	A	B	C	H	L	L1	L2	L3	D	a	h	k	Max. clamping force [daN]	Weight [lbs]
		[mm]														
7-251-005	6516-M125	125	196	425	67	109	530	155	50	389	155	205	42	14	3,500	43.8
7-251-006	6516-M160	160	246	565	80	130	615	200	65	525	200	280	50	18	5,500	115.3
7-251-008	6516-M200	200	304	675	99	162	795	250	90	635	250	375	63	18	7,500	204.6



CAMLOCK MACHINE VISE

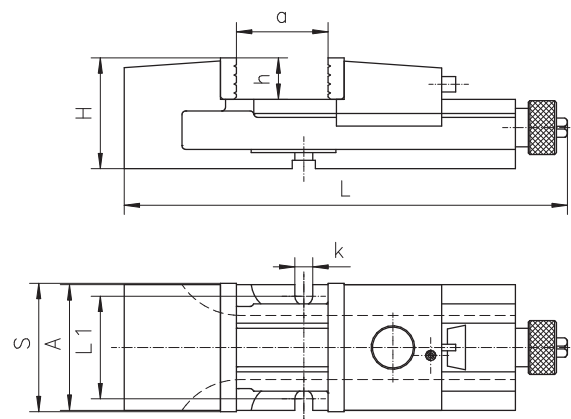
6517

Matching swivel base



Type 6587 Page 21

Accessories 19-31



Features:

- The movable rear jaw can be placed in different positions through a unique cam locking system, making the rear jaw positioning fast and easy
- Removable grooved jaw inserts, one side smooth, the other side grooved, are hardened and ground
- Fully covered lead screw protected against dirt and chips
- Fully ground steel position beam
- Body and rear jaw are high-quality castings

Application:

- Designed for use with milling machines, drill presses, etc.

Standard accessories:

- Handcrank
- Slot nuts

Code No.	Type	S	A	H	L	L1	a	h	k	Max. clamping force [daN]	Weight [lbs]
		[mm]									
7-250-004	6517-M100	100	98	85	346	80	125	32	14	1,800	23.3
7-250-005	6517-M125	125	122	105	418	101	160	40	14	2,500	44.9
7-250-006	6517-M160	160	156	125	524	126	180	50	18	4,200	83.6
7-250-008	6517-M200	200	194	150	695	160	280	63	18	6,200	171.6