

**6530**
**TWO ANGLE SWIVEL MACHINE VISE**
**Features:**

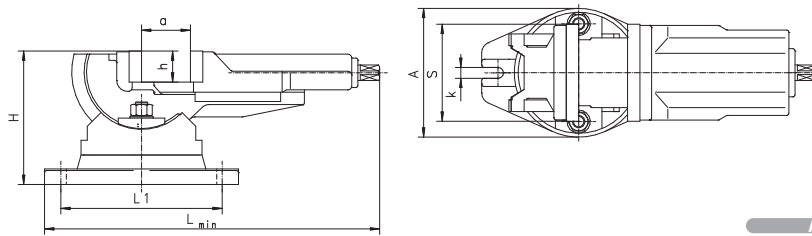
- Up to 90° angle of incline from the horizontal position
- 360° swivel base with ground contact edge and graduation
- Removable grooved jaw inserts are hardened and ground,
- Fully covered lead screw protected against dirt & chips

**Application:**

- Designed for milling, planing and drilling when two angle settings occur

**Standard accessories:**

- Handcrank
- Slot nuts


**Accessories 19-31**

Code No.	Type	S	A	H	L <sub>min</sub>	L1	a	h	k	Max. clamping force [daN]	Weight [lbs]
		[mm]									
7-249-005	6530-100	100	144	145	372	181	80	32	14	2,500	27.5
7-249-010	6530-125	125	168	169	437	208	100	40	14	3,500	44.0
7-249-015	6530-160	160	212	200	450	208	125	50	18	4,500	75.2

**6531**
**SELF-CENTERING MACHINE VISE**
**Features:**

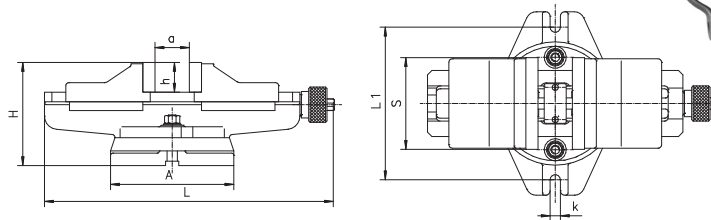
- 360° swivel base with ground contact edge and graduation
- Removable grooved jaw inserts are hardened and ground
- Sturdy design of cast iron

**Application:**

- Designed for various types of milling and planing of forms, slots and grooves

**Standard accessories:**

- Handcrank
- Slot nuts


**Accessories 19-31**

Code No.	Type	S	A	H	L	L1	a	h	k	Max. clamping force [daN]	Weight [lbs]
		[mm]									
7-210-005	6531-125	125	168	136	458	208	100	40	14	2,500	42.3
7-210-006	6531-160	160	212	169	534	248	125	50	18	4,000	73.7
7-210-008	6531-200	200	286	185	591	333	160	63	18	5,500	59.0

**6534**
**THREE ANGLE MULTI-PURPOSE MACHINE VISE**
**Features:**

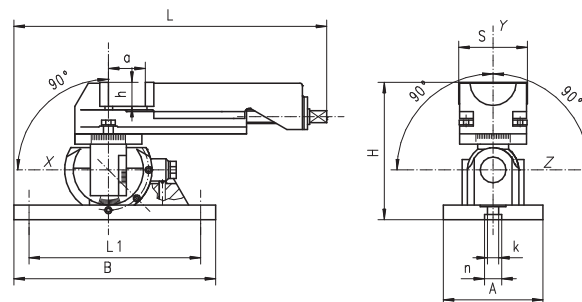
- Made of high-quality iron castings
- Rotation in „Y“ axis within 360°
- Can tilt in two directions within 90° around „X“ axis and tilt within 90° from vertical to horizontal position around „Z“ axis
- Accuracy in every angular position in 3 axes equal to 30°

**Application:**

- For the grinding of surfaces rotated in one or several planes from the base, spotting and drilling holes in such surfaces and for precise milling at low cutting forces

**Standard accessories:**

- Handcrank
- Clamping bolts


**Accessories 19-31**

Code No.	Type	S	A	B	H	L	L1	a	h	k	n	Max. clamping force [daN]	Weight [lbs]
		[mm]											
7-212-008	6534-80M	80	116	235	160	321.5	199	63	25	13	20	1,000	26.9