

QUICK-ACTING MACHINE VISE

6540

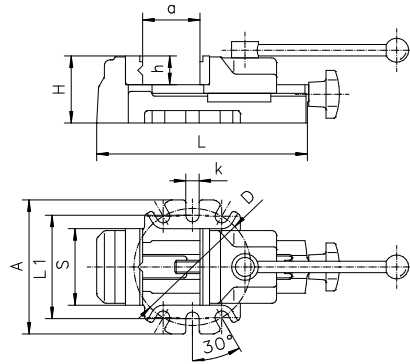
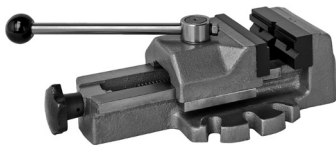
Features:

- The initial clamping is done by the movable jaw, placed closely to the workpiece
- Final clamping of the workpiece is performed by the lever movement of the quick-acting cam-mechanism, which minimizes the required setting time
- Recessed jaw inserts for convenient leveling of workpiece
- Guiding rods and cam mechanism are hardened and ground
- Removable jaw inserts are hardened and blackened
- Body and movable jaw are high-quality castings

Application:

- Designed for milling and drilling operations and instant setting of the workpiece

Code No.	Type	S	A	H	L	L1	L2	a	h	k	Max. clamping force [daN]	Weight [lbs]
		[mm]										
7-260-003	6540-80	80	120	68	226	208	102	80	16.5	12	350	8.8
7-260-004	6540-100	100	160	85	293	257	124	125	16.5	14	400	15.4
7-260-005	6540-125	125	185	90	330	292	147	150	16.5	14	500	22.0
7-260-006	6540-160	160	224	95	380	340	184	160	16.5	18	600	34.1



QUICK-ACTING MACHINE VISE

6542

Features:

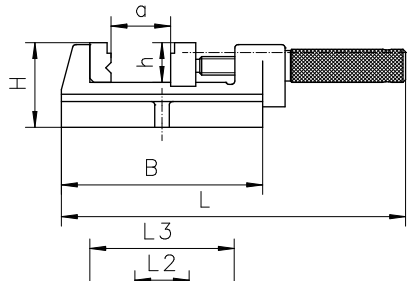
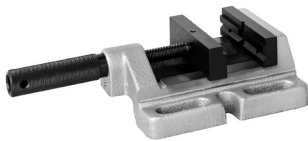
- The clamping of the workpiece is performed by a single rotary movement of the lever
- The V-block is fastened to the fixed jaw, which enables the clamping of bars
- V-block enables horizontal or vertical clamping of flat or round workpieces
- Cam mechanism is hardened and ground
- Removable jaw inserts are hardened and blackened
- Body and movable jaw are high-quality castings

Application:

- Designed for milling and drilling operations, especially for series machining and instant setting of the workpiece

Accessories 19-31

Code No.	Type	S	A	H	L	L1	D	a	h	k	Max. quick grip jaw stroke	Max. clamping force [daN]	Weight [lbs]
		[mm]											
7-205-000	6542-80	80	140	70	220	108	122	80	30	14	4	800	11.4
7-205-005	6542-100	100	165	80	270	133	140	100	35	14	4	1,200	19.6



DRILLING MACHINE VISE

6543

Features:

- Vertical and horizontal V-grooves on the fixed jaw insert and recesses of both jaws enable a wide variety of workpieces to be clamped
- Body is made of high-quality castings

Application:

- Ideal for most drilling and light milling operations

Accessories 19-31

Code No.	Type	S	A	B	H	L	L1	L2	L3	a	h	k	Max. clamping force [daN]	Weight [lbs]
		[mm]												
7-207-003	6543-85M	85	140	152	64	265	114	41	109	70	30	11	400	7.5
7-207-004	6543-100M	100	152	170	64	285	124	57	127	85	30	13	500	8.8
7-207-005	6543-120M	120	176	212	64	360	148	71	169	120	30	13	650	11.0
7-207-006	6543-150M	150	208	262	66	442	178	75	209	150	38	13	800	18.5