

6546
SHAFT HOLDING MACHINE VISE
Features:

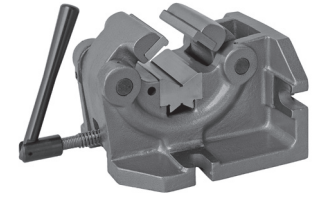
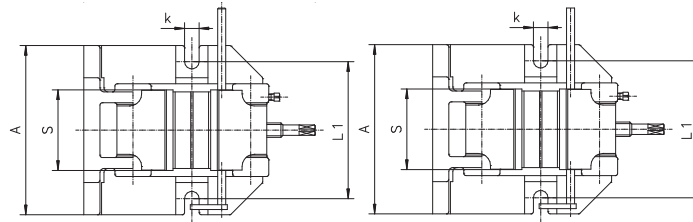
- Able to be set up in both horizontal and vertical positions
- Hardened and ground jaw inserts and V-block
- Sturdy, cast iron design

Application:

- Ideal for most drilling and light milling operations

Standard accessories:

- Handcrank
- Slot nuts



Accessories 19-31

Code No.	Type	S	A	H	L	L1	d	k	Max. clamping force [daN]	Weight [lbs]
		[mm]								
7-225-004	6546-100	100	210	170	287	170	10-63	18	1,000	46.0
7-225-005	6546-125	125	200	235	389	160	15-100	18	1,500	83.2
7-225-006	6546-160	160	242	320	456	202	50-160	18	2,000	171.6

6910
MACHINE VISE WITH PRISMATIC GUIDANCE OF MOVABLE JAW
Features:

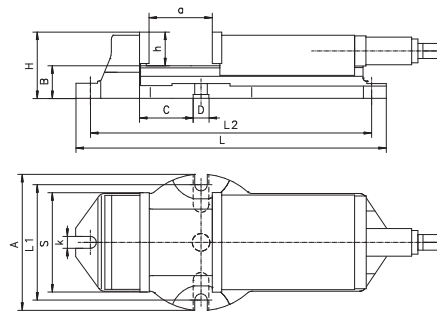
- Smooth jaw inserts are hardened and ground, ensuring longer life with maintained accuracy and repeatability
- Fully covered lead screw in a bronze nut protects against dirt and chips
- Body and movable jaw are high-quality castings

Application:

- Designed for use with milling machines, drill presses, etc

Standard accessories:

- Adjustable end-stop
- Handcrank
- Slot nuts



Matching swivel base



Accessories 19-31

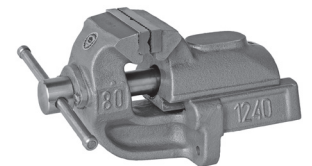
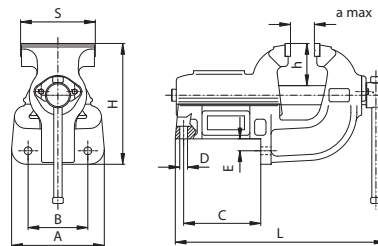
Code No.	Type	S	A	B	C	D	H	L	L1	L2	a	h	k	Max. clamping force [daN]	Weight [lbs]
		[mm]													
7-203-004	6910-105	105	144	46	28.5	25	84	300	122	280	75	38	16	2,500	26.8
7-203-006	6910-155	155	215	52	85.5	25	105	495	183	449	165	53	20	3,800	80.1
7-203-008	6910-210	210	268	67	103.5	25	126	593	236	549	205	59	20	5,300	150.0

1240
HEAVY DUTY TABLE VISE
Features:

- Steel jaw inserts induction hardened and ground
- Jaw inserts with vertical and horizontal recesses for clamping round workpieces
- Lead-screw completely covered to keep dirt out
- Fixed base and movable back jaw

Application:

- This high-quality, rugged vise with dovetail guides is well-suited to extra heavy work



Accessories 19-31

Code No.	Type	S	A	B	C	D	E	H	L	a	h	Max. clamping force [daN]	Weight [lbs]
		[mm]											
7-235-004	1240-80L	80	115	85	87	9	16	140	250	100	51	2,000	15.0
7-235-006	1240-100L	100	115	85	87	9	16	140	250	100	51	2,400	16.3
7-235-008	1240-125L	125	155	100	129	13	20	200	354	140	71	2,800	39.6
7-235-010	1240-150L	150	180	125	187	13	20	222	437	175	79	3,600	68.2
7-235-012	1240-175L	175	180	125	187	13	20	222	437	175	79	4,000	70.4
7-235-014	1240-200L	200	214	150	232	15	26	268	585	250	90	4,300	129.8
7-235-016	1240-250L	250	214	150	232	15	26	268	585	250	90	4,500	135.3