

HEAVY DUTY BENCH VISE

1250

Features:

- Ruggedly constructed with body and jaws made of high-quality cast iron and other parts of alloy steel
- Steel jaw inserts induction hardened and ground, file cut for good grip
- Jaw inserts with vertical and horizontal recesses for clamping round workpieces
- Lead-screw completely covered to keep dirt out

Application:

- Designed for use with milling machines, drill presses, etc.

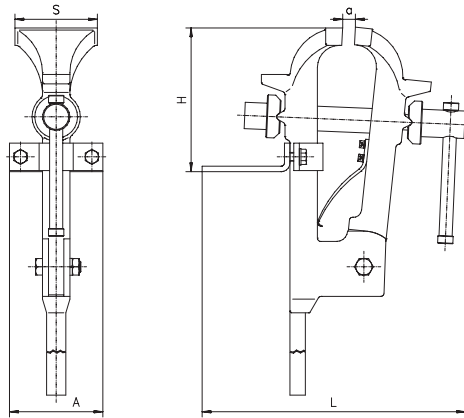
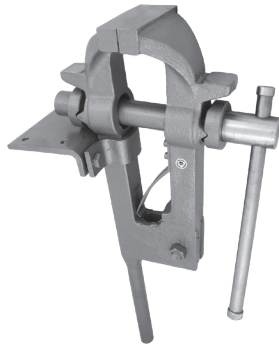
| Code No. | Type | S | A | H | L | a | d | h | Max. clamping force | Weight |
|-----------|-----------|------|-----|-----|-----|-----|----|----|---------------------|--------|
| | | [mm] | | | | | | | [daN] | [lbs] |
| 7-231-005 | 1250-63L | 63 | 120 | 112 | 229 | 63 | 9 | 45 | 1,200 | 8.8 |
| 7-231-010 | 1250-80L | 80 | 137 | 137 | 280 | 80 | 11 | 58 | 1,800 | 14.5 |
| 7-231-015 | 1250-100L | 100 | 137 | 137 | 282 | 80 | 11 | 58 | 2,200 | 16.5 |
| 7-231-020 | 1250-125L | 125 | 156 | 156 | 323 | 100 | 11 | 65 | 2,600 | 23.1 |
| 7-231-025 | 1250-150L | 150 | 170 | 182 | 380 | 125 | 13 | 75 | 3,400 | 35.6 |
| 7-231-030 | 1250-175L | 175 | 190 | 202 | 434 | 150 | 13 | 90 | 3,800 | 50.6 |

Matching swivel base



Type 1282 Page 22

Accessories 19-31



BLACKSMITH'S VISE

1253

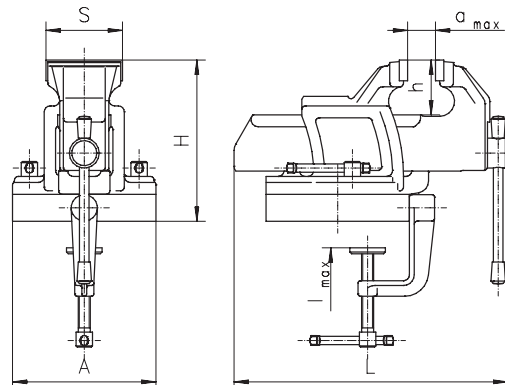
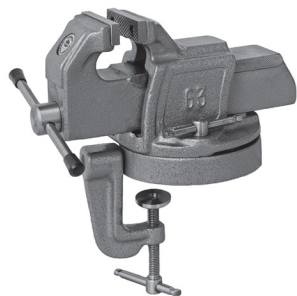
Features:

- Fixed and movable jaws are made of high-grade steel castings
- Knurl cut in jaw clamping surfaces ensures firm and safe clamping

Application:

- Designed to be used for extra heavy locksmith's and blacksmith's work

| Code No. | Type | S | A | B | H | L | a max. | Max. clamping force | Weight |
|-----------|-----------|------|-----|-----|-----|-----|--------|---------------------|--------|
| | | [mm] | | | | | | [daN] | [lbs] |
| 7-234-006 | 1253-150M | 150 | 170 | 820 | 255 | 465 | 135 | 3,700 | 80.5 |



PORTABLE VISE WITH SWIVEL BASE

1256

Features:

- Design is similar to Type 1255
- Swivel base enables the vise to be positioned at any angle
- Must not be fixed to a table thicker than 52mm

| Code No. | Type | S | A | H | L | a max. | h | l | Max. clamping force | Weight |
|-----------|---------|------|-----|-----|-----|--------|----|----|---------------------|--------|
| | | [mm] | | | | | | | [daN] | [lbs] |
| 7-235-002 | 1256-63 | 63 | 120 | 131 | 228 | 63 | 45 | 42 | 1,200 | 11 |