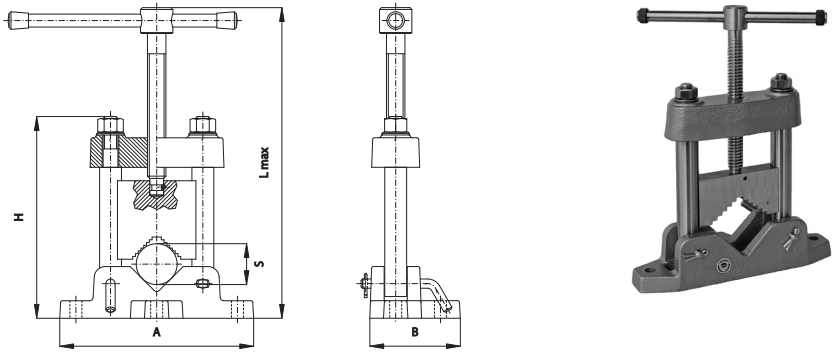


1710
BENCH VISE FOR PIPES
Features:

- Body is made of high-quality cast iron while other parts, including movable jaw are made of steel and hardened

Application:

- This vise is designed for the clamping and working of pipes and tubes of any length



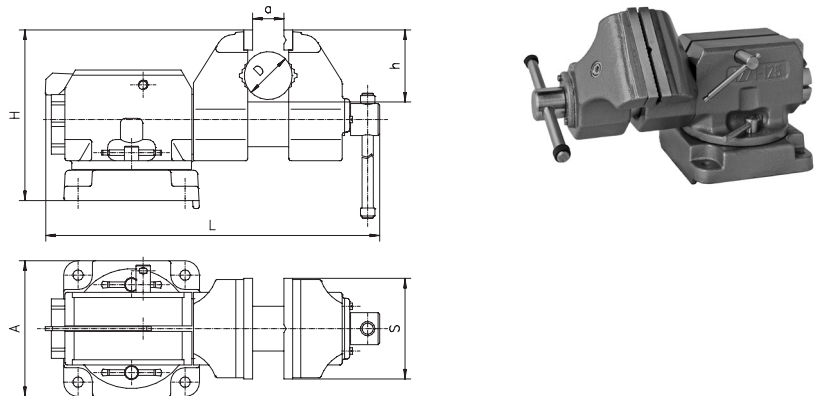
Code No.	Type	S	A	B	H	L max.	Max. clamping force [daN]	Weight [lbs]
		[mm]						
7-324-102	1710-50	15-50	210	98	218	360	2,800	13.2
7-324-103	1710-80	22-80	270	108	250	400	2,800	19.8

1271
HEAVY DUTY AXIS VISE
Features:

- Able to rotate clamped workpiece to any angle in vertical axis and 45° pitch in horizontal axis
- Can clamp round workpieces in V-shaped jaws
- Swivel base which allow rotation through 360° with positive, firm locking in any position
- Steel jaw inserts induction hardened and ground
- Ruggedly constructed with high-quality cast iron body, jaws and base with other parts made of alloy steel
- Lead-screw completely covered to keep dirt out

Application:

- This high-quality, rugged vise with dovetail guides is well-suited to extra heavy work



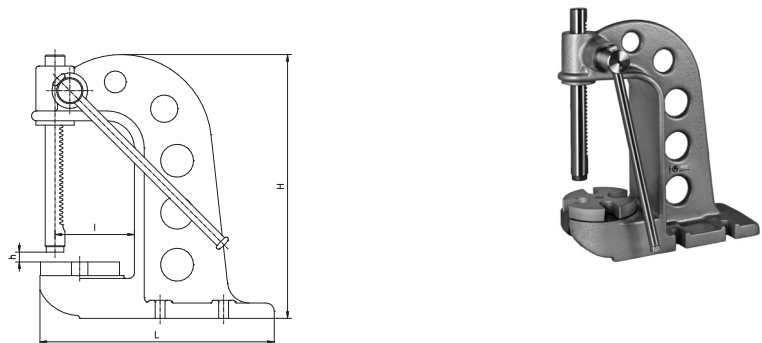
Code No.	Type	S	A	H	L	a max.	h	D	Max. clamping force [daN]	Weight [lbs]
		[mm]								
7-245-005	1271-125	125	170	215	373	150	80	32-60	3,000	60.5

9210
MANUALLY OPERATED PRESS
Features:

- High operating precision
- High pressing force
- Simple operation

Application:

- Designed for use in any kind of pressing of various fitted elements



Code No.	Type	H	h max.	L	I	Max. clamping force [daN]	Weight [lbs]
		[mm]					
7-234-302	9210-485	485	250	420	145	2,000	86.7