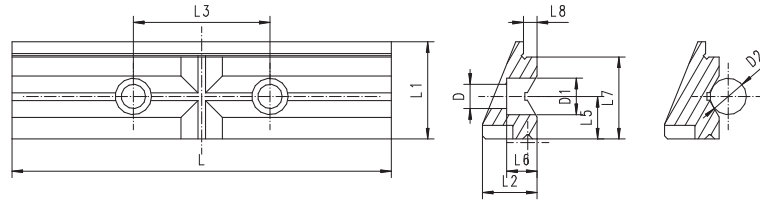


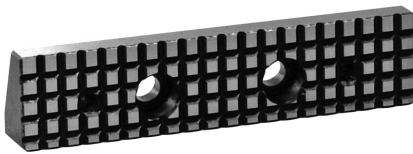
FOR TYPE  
6620, 6622, 6623, 6624, 6820

#### PRISMATIC JAW INSERT

■ 2-pc/set



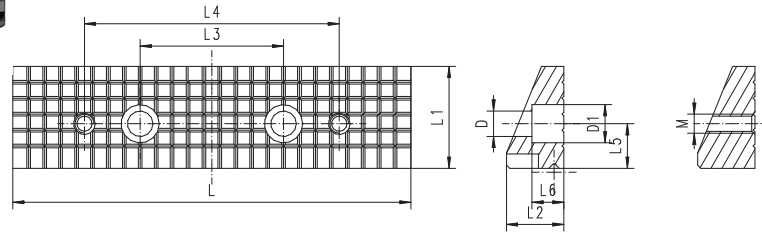
Code No.	L	L1	L2	L3	L4	L5	L6	L7	L8	D	D1	D2
	[mm]											
7-223-804P	100	23	15	32	-	9.5	8.0	19	4.0	6.5	10	3+20
7-223-805P	125	32	18	45	-	14.0	10.0	27	4.5	8.0	12	4+27
7-223-806P	150	42	24	67	-	18.0	13.5	37	5.0	10.0	15	6+41
7-223-808P	200	50	30	74	-	22.0	15.0	40	5.0	10.0	15	7+48



FOR TYPE  
6620, 6622, 6623, 6624, 6820

#### GROOVED JAW INSERT

■ 2-pc/set

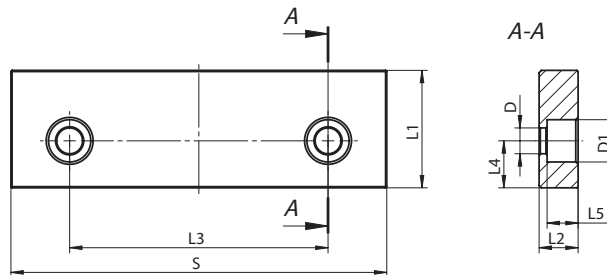


Code No.	L	L1	L2	L3	L4	L5	L6	D	D1	M
	[mm]									
7-223-804G	100	23	15	32	66	9.5	8.0	6.5	10	M5
7-223-805G	125	32	18	45	80	14.0	10.0	8.0	12	M6
7-223-806G	150	42	24	67	110	18.0	13.5	10.0	15	M8
7-223-808G	200	50	30	74	140	22.0	15.0	10.0	15	M8



#### CLAMPING INSERTS FOR MACHINE VISES

- One sided, smooth, hardened and ground
- 2-pc/set



Code No.	S	L1	L2	L3	L4	L5	D	D1	For Type
	[mm]								
7-290-024	100	32	13.5	70	14	10.3	9	15	6512, 6530, 6537
7-290-025	125	40	16.6	85	17	13.2	11	18	6512, 6530, 6531, 6537
7-290-026	160	50	16.6	110	20	13.2	11	18	6512, 6515, 6516, 6522, 6530, 6531, 6537
7-290-028	200	63	21.0	140	28	16.0	14	20	6512, 6515, 6516, 6522, 6531, 6537
7-290-0240	125	42	16.6	89	18	13.2	11	18	6515, 6516