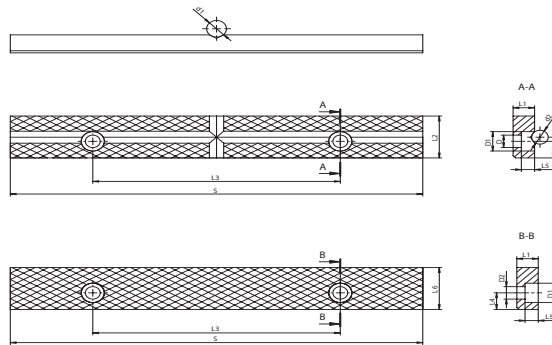


- 1
- 2
- 3
- 4
- 5

CLAMPING INSERTS FOR BENCH VISES

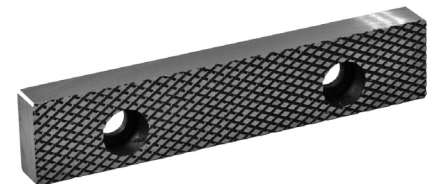
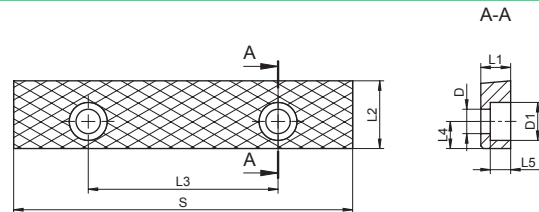
2-pc/set



Code No.	S	L1	L2	L3	L4	L5	L6	D	D1	D2	Clamping range	Clamping range	For Type
											Ø vertical	Ø horizontal	
[mm]													
7-231-910	80	9	20.7	50	8	6.0	20.4	7	11	6.6	3-13	3-13	1240. 1250
7-231-915	100	9	20.7	60	8	6.0	20.4	7	11	6.6	3-13	3-13	1240. 1250
7-231-920	125	9	21.5	60	8	6.5	21.5	7	11	7.0	4-16	3-13	1240. 1250
7-231-925	150	11	25.2	100	10	8.0	25.2	9	14	9.0	4-16	4-16	1240. 1250
7-231-930	175	13	30.3	100	12	8.0	30.3	9	14	9.0	4-16	4-16	1250
7-235-912	175	11	25.2	100	10	8.0	25.2	9	14	9.0	4-16	4-16	1240
7-235-914	200	13	30.3	150	12	8.0	30.3	9	14	9.0	4-16	4-16	1240
7-235-916	250	13	30.3	150	12	8.0	30.3	9	14	9.0	4-16	4-16	1240

CLAMPING INSERTS FOR BENCH VISES

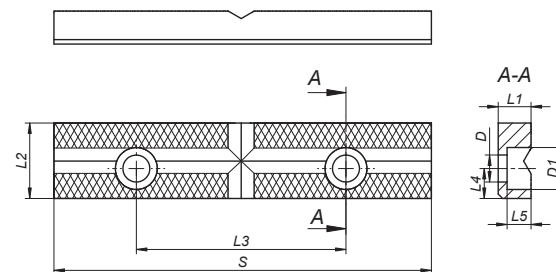
1-pc/set



Code No.	S	L1	L2	L3	L4	L5	D	D1	For Type
7-231-905	63	7	17.4	40	7.5	5.6	6	9.5	1250. 1256
7-235-908	125	11	25.0	70	10.0	7.5	9	14.0	1271

CLAMPING INSERTS FOR BENCH VISES

1-pc/set



Code No.	S	L1	L2	L3	L4	L5	D	D1	For Type
7-245-905	126	11	25.2	70	10	8	9	14.0	1271