

- 1
- 2
- 3
- 4
- 5



HANDCRANK FOR MACHINE VISES

Code No.	Square x Length [mm]	For Type
7-233-042	12 x 160	6517,18-100
7-233-061	14 x 160	6517,18-125, 6531-125, 6546-125, 6531-160, 6524-125
7-233-038	17 x 160	6910,11-105, 6910,11-155, 6910,11-155S, 6910,11-210



HANDCRANK FOR MACHINE VISES

Code No.	Square x Length [mm]	For Type
7-233-040	17 x 200	6512,37-100,125,160,200, 6530-100,125,160, 6522-160,200, 6517,18-160,200, 6546-160, 6531-200
7-210-200H	19 x 200	6512,37-250



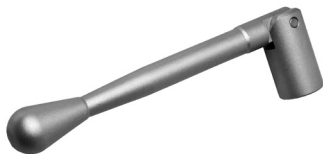
HANDCRANK FOR MACHINE VISES

Code No.	Square x Length [mm]	For Type
7-233-030	11 x 180	6546-100



HANDCRANK FOR MACHINE VISES

Code No.	Hex x Length [mm]	For Type
7-233-050	12 x 200	6515,16-125, 6515,16-160, 6515,16-200



HANDCRANK FOR MACHINE VISES

Code No.	Hex x Length [mm]	For Type
7-233-060	19x228	6523-155



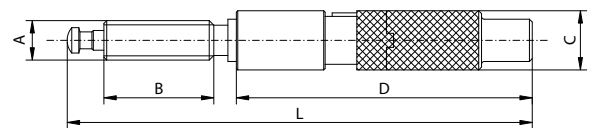
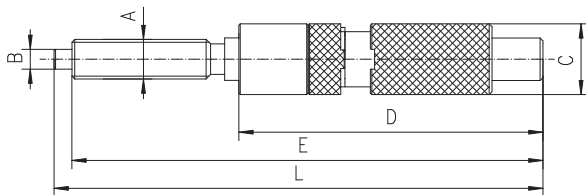
ANGLE SOCKET WRENCH

Code No.	Size [mm]	For (150, 200)
7-223-905	100, 125	6568, 6620, 6622, 6820
7-223-908	150, 200	



- The hydraulic spindle is equipped with a mechanical clutch which makes it possible to choose the type of operation - mechanical only or using the hydraulic system
- Mechanical clamping is especially required when the clamped object is made of deformable materials which could be damaged when clamped with the hydraulic system
- Sturdy design

HYDRAULIC SPINDLE



3690-M

Code No.	Size	For 6515, 6516	A	B	C	D	E	L	Max. clamping force [daN]	Weight [lbs]
			[mm]							
7-296-102	2	125	Tr 28 x 5	14	50	215	392	408	3,500-4,000	6.6
7-296-103	3	160	Tr 32 x 6	16	58	230	465	485	5,500-6,000	9.9
7-296-104	4	200	Tr 36 x 6	18	64	273	608	619	7,500-8,000	15.0

3690-MN

Code No.	Size	For 6621, 6821	A	B	C	D	L	Max. clamping force [daN]	Weight [lbs]
			[mm]						
7-296-002	2	150	Tr28 x 5	110	50	215	370	3,500-4,000	5.3
7-296-003	3	200	Tr32 x 6	117	58	230	403	5,500-6,000	8.4