

6620

Features:

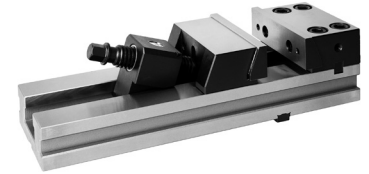
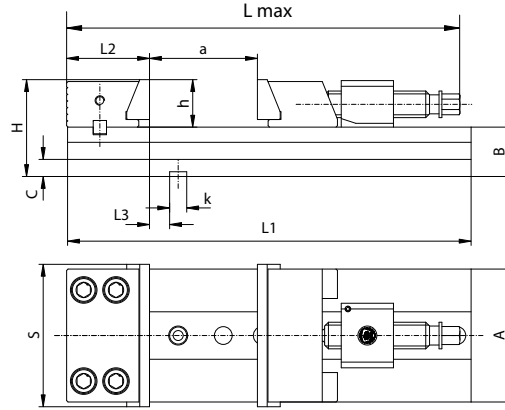
- Revised and upgraded successor model of Type 6577
- Reversible fixed jaw
- Quick re-adjustable, self-adjusting movable jaws
- Can be used with removable jaw inserts
- Made of high-grade alloy steel, stabilized and hardened

Application:

- Designed for precision grinding and milling

Standard accessories:

- Wrench
- Slot nuts with „k“ dimension
- Vise clamps
- Swinging lead plate



Accessories 19-31
Technical Data 32-33

Code No.	Type	S	A	B -0.02	C	H	L max.	L1	L2	L3	a	h	k	Torque on wrench	Max. clamping force	Weight
														[Nm]	[daN]	[lbs]
7-223-040	6620-100-320-165	100	85	35	13	65	389	320	61.80	12.00	165	30	12	40	2,000	21.6
7-223-050	6620-125-335-165	125	105	42	15	82	406	335	68.00	18.00	165	40	12	60	3,000	34.6
7-223-060	6620-150-425-210	150	140	52	18	102	515	425	87.29	21.20	210	50	18	120	4,100	70.3
7-223-062	6620-150-475-260	150	140	52	18	102	565	475	87.29	21.20	260	50	18	120	4,100	77.4
7-223-063	6620-150-520-305	150	140	52	18	102	610	520	87.29	21.20	305	50	18	120	4,100	81.3
7-223-080	6620-200-535-260	200	165	61	20	121	623	535	109.43	38.07	260	60	18	170	4,500	129.7
7-223-082	6620-200-585-310	200	165	61	20	121	673	585	109.43	38.07	310	60	18	170	4,500	135.7
7-223-085	6620-200-635-360	200	165	61	20	121	723	635	109.43	38.07	360	60	18	170	4,500	141.6

6621

Features:

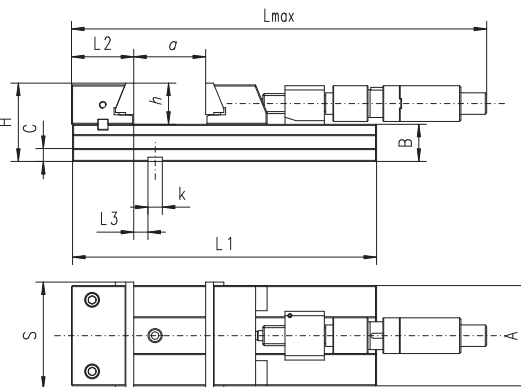
- Optimized and improved successor of the type 6578
- Vise equipped with hydraulic spindle enabling the application of high clamping force and safe clamping with little effort from the operator
- Reversible fixed jaw
- Quick re-adjustable, self-adjusting movable jaws
- Can be used with removable jaw inserts
- Made of high-grade alloy steel, stabilized and hardened

Application:

- Designed for precision grinding and milling

Standard accessories:

- Wrench
- Slot nuts with „k“ dimension
- Vise clamps
- Swinging lead plate



Accessories 19-31
Technical Data 32-33

Code No.	Type	S	A	B -0.02	C	H	L max.	L1	L2	L3	a	h	k	Torque on wrench	Max. clamping force	Weight
														[Nm]	[daN]	[lbs]
7-223-060P	6621-150-425-210	150	140	52	18	102	726	425	87.29	21.20	210	50	18	4,100	73.5	
7-223-062P	6621-150-475-260	150	140	52	18	102	776	475	87.29	21.20	260	50	18	4,100	80.5	
7-223-063P	6621-150-520-305	150	140	52	18	102	821	520	87.29	21.20	305	50	18	4,100	84.5	
7-223-080P	6621-200-535-260	200	165	61	20	121	875	535	109.43	38.07	260	60	18	4,500	135.3	
7-223-082P	6621-200-585-310	200	165	61	20	121	907	585	109.43	38.07	310	60	18	4,500	141.2	
7-223-085P	6621-200-635-360	200	165	61	20	121	957	635	109.43	38.07	360	60	18	4,500	147.2	