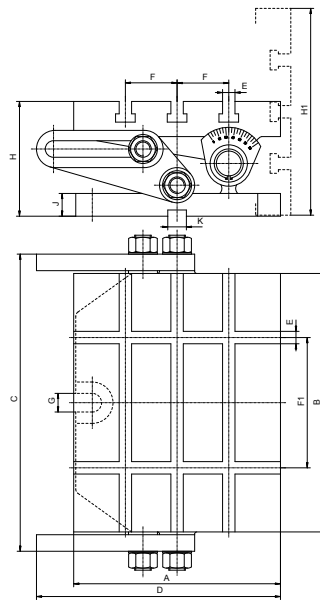


- 1
- 2
- 3
- 4
- 5

5150

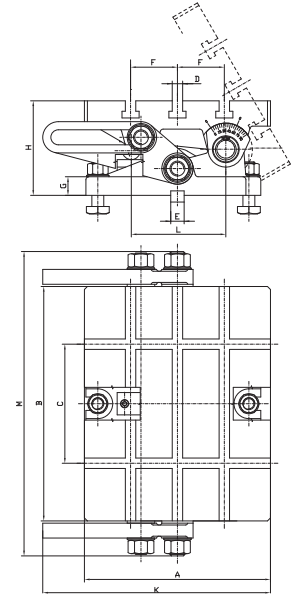
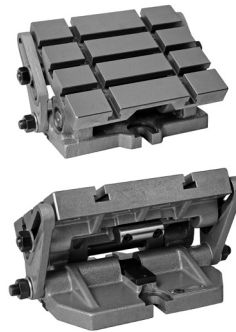
- Easily set at any angle between horizontal and vertical plates
- The plate will accept accessories and workpieces larger than the table top



Code No.	Type	A	B	C	D	E	F	F1	G	H	H1	J	K	Max. working weight	Weight
		[mm]													[lbs]
7-615-008	5150-200x250	200	250	324	236	12	50	126	18	111	201	22	18	132	46.3
7-615-010	5150-250x315	250	315	405	306	14	63	160	18	127	252	25	18	220	81.6

5155

- Easily set at any angle between horizontal and vertical plates
- Swivel plates type 5155 (sine) permit accurate angle setting in 0÷60° range by means of gauge blocks



Code No.	Type	A	B	C	D	E	F	G	H	K	L	M	Max. working weight	Weight
		[mm]												[lbs]
7-615-208	5155-200x250	200	250	126	12	18	50	22	111	236	100	324	132	46.3
7-615-210	5155-250x315	250	315	160	14	18	63	25	127	306	127	405	100	81.6

9450

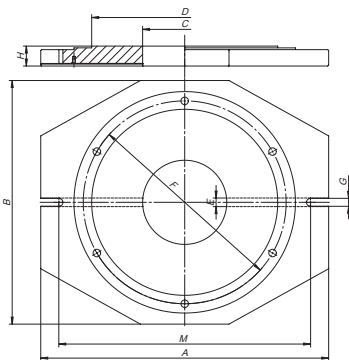
BASES

FOR PLAIN BACK CHUCKS



Standard accessories

- Slot nuts
- Clamping bolts



Code No.	Type	Chuck Size	A	B	C	D	d	E	F	G	H	M	Weight
			[mm]										
7-630-006	9450-160	160	250	190	90	125	11	18	140	14	28	224	10.6
7-630-008	9450-200	200	300	234	130	160	11	18	176	18	32	264	16.5
7-630-010	9450-250	250	354	292	147	200	14	18	224	18	32	322	25.5
7-630-012	9450-315	315	426	362	170	260	17	18	286	18	40	394	35.3
7-630-016	9450-400	400	520	450	170	330	17	18	362	18	48	488	50.7
7-630-020	9450-500	500	640	560	240	420	17	18	458	17	48	608	126.8

9452

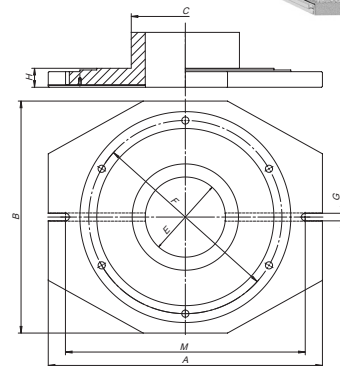
BASES

FOR SET-TRU MOUNTING



Standard accessories

- Slot nuts
- Clamping bolts



Code No.	Type	Chuck Size	A	B	C	E	F	H	M	Weight
			[mm]							
7-630-606	9452-160	160	250	190	86.0	60	140.0	28	224	10.3
7-630-608	9452-200	200	300	234	110.0	70	176.0	28	268	16.2
7-630-610	9452-250	250	354	292	145.0	100	224.0	32	322	25.0
7-630-612	9452-315	315	426	362	180.0	120	286.0	40	394	35.5
7-630-616	9452-400	400	520	450	298.5	120	371.5	48	488	51.2