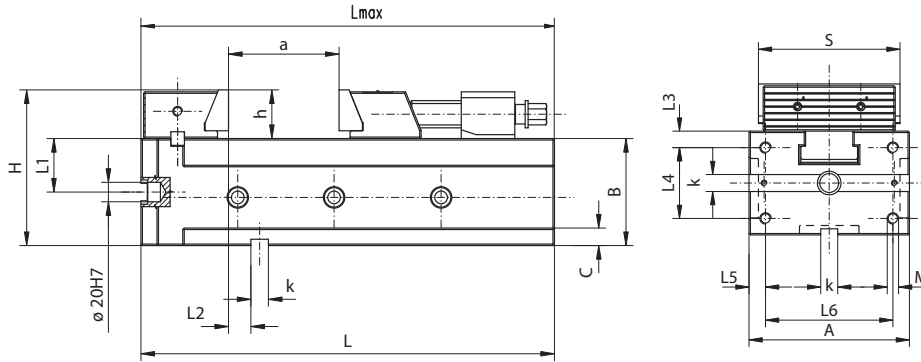
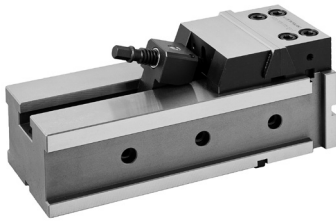


6820



Features:

- Revised and upgraded successor model of Type 6800
- Horizontal, vertical or side mounting
- Set of 4 vises can be used vertically
- Reversible fixed jaw
- Quick re-adjustable, self-adjusting movable jaws
- Can be used with removable jaw inserts
- Made of high-grade alloy steel, stabilized and hardened

Application:

- Designed for precision grinding and milling

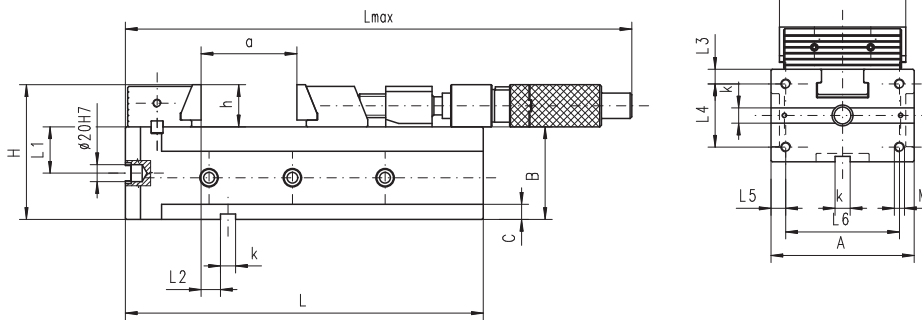
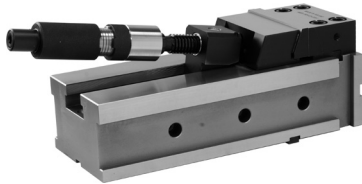
Standard accessories:

- Wrench
- Slot nuts with „k” dimension
- Vise clamps
- Swinging lead plate

Accessories 19-31
Technical Data 32-33

Code No.	Type	S	A	a	B -0.02	C	H	h	K	L max.	L	L1 -0.02	L2 ±0.02	L3 ±0.1	L4 ±0.1	L5 ±0.1	L6 ±0.1	M	Torque on wrench	Max. clamping force	Weight
																			[Nm]	[daN]	[lbs]
7-223-204	6820-100-320-160	100	110	160	75	13	105	30	12	390	320	37.5	14	10	55	15	80	M10	40	2,000	42.2
7-223-206	6820-125-335-160	125	130	160	90	15	130	40	12	406	335	45	19	15	55	17	96	M12	60	3,000	68.6
7-223-208	6820-150-425-205	150	170	205	110	18	160	50	18	515	425	55	23	17.5	75	17.5	135	M12	120	4,100	139.5

6821



Features:

- Revised and upgraded successor model of Type 6801
- Vise equipped with hydraulic spindle enabling the application of high clamping force and safe clamping with little effort from the operator
- Horizontal, vertical or side mounting
- Set of 4 vises can be used vertically
- Reversible fixed jaw
- Quick re-adjustable, self-adjusting movable jaws
- Can be used with removable jaw inserts
- Made of high-grade alloy steel, stabilized and hardened

Application:

- Designed for precision grinding and milling

Standard accessories:

- Wrench
- Slot nuts with "k" dimension
- Vise clamps
- Swinging lead plate

Accessories 19-31
Technical Data 32-33

Code No.	Type	S	A	a	B -0.02	C	H	h	K	L max.	L	L1 -0.02	L2 ±0.02	L3 ±0.1	L4 ±0.1	L5 ±0.1	L6 ±0.1	M	Torque on wrench	Max. clamping force	Weight
																			[Nm]	[daN]	[lbs]
7-223-209	6821-150-425-205	150	170	205	110	18	160	50	18	726	425	55	23	17.5	75	17.5	135	M12	120	4,100	142.6