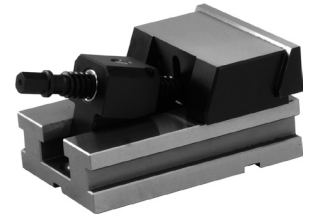
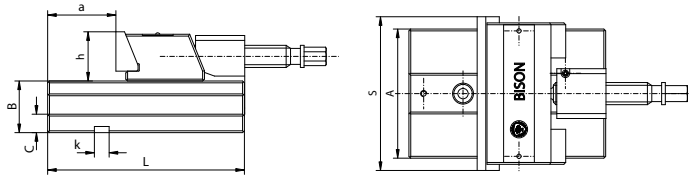


1  
2  
3  
4  
5

**6622**

- Revised and upgraded successor model of Type 6568
- Movable element

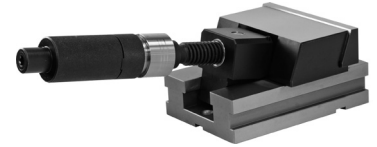
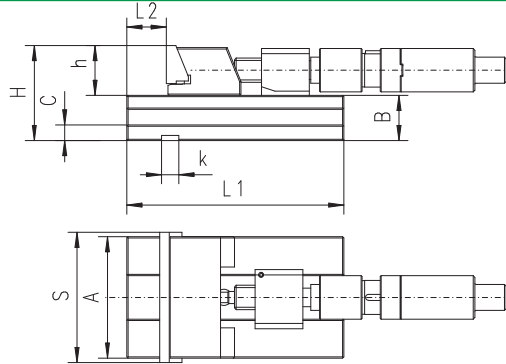


Accessories 19-31  
Technical Data 32-33

| Code No.  | Type     | S    | A   | B  | C  | L   | a  | h  | k  | Max. clamping force<br>[daN] | Weight<br>[lbs] |
|-----------|----------|------|-----|----|----|-----|----|----|----|------------------------------|-----------------|
|           |          | [mm] |     |    |    |     |    |    |    |                              |                 |
| 7-223-124 | 6622-100 | 100  | 85  | 35 | 13 | 140 | 48 | 30 | 12 | 2,000                        | 11.7            |
| 7-223-125 | 6622-125 | 125  | 105 | 42 | 15 | 160 | 60 | 40 | 12 | 3,000                        | 19.1            |
| 7-223-126 | 6622-150 | 150  | 140 | 52 | 18 | 210 | 86 | 50 | 18 | 4,100                        | 45.3            |
| 7-223-128 | 6622-200 | 200  | 165 | 61 | 20 | 240 | 78 | 60 | 18 | 4,500                        | 75.5            |

**6623**

- Revised and upgraded successor model of Type 6571
- Movable element with hydraulic spindle
- Similar to Type 6622

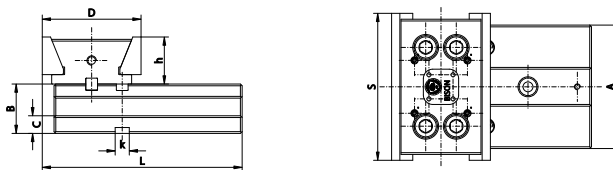


Accessories 19-31  
Technical Data 32-33

| Code No.  | Type     | S    | A   | B  | C  | H   | L1  | L2 | h  | k  | Max. clamping force<br>[daN] | Weight<br>[lbs] |
|-----------|----------|------|-----|----|----|-----|-----|----|----|----|------------------------------|-----------------|
|           |          | [mm] |     |    |    |     |     |    |    |    |                              |                 |
| 7-223-136 | 6623-150 | 150  | 140 | 52 | 18 | 102 | 210 | 86 | 50 | 18 | 4,100                        | 45.3            |
| 7-223-138 | 6623-200 | 200  | 165 | 61 | 20 | 121 | 240 | 78 | 60 | 18 | 4,500                        | 75.5            |

**6624**

- Revised and upgraded successor model of Type 6569-M
- Fixed element



Accessories 19-31  
Technical Data 32-33

| Code No.  | Type     | S    | A   | B  | C  | D   | L     | h  | k  | Max. clamping force<br>[daN] | Weight<br>[lbs] |
|-----------|----------|------|-----|----|----|-----|-------|----|----|------------------------------|-----------------|
|           |          | [mm] |     |    |    |     |       |    |    |                              |                 |
| 7-223-144 | 6624-100 | 100  | 85  | 35 | 13 | 80  | 163,0 | 30 | 12 | 2,000                        | 9.7             |
| 7-223-145 | 6624-125 | 125  | 105 | 42 | 15 | 84  | 170,0 | 40 | 12 | 3,000                        | 14.7            |
| 7-223-146 | 6624-150 | 150  | 140 | 52 | 18 | 110 | 221,5 | 50 | 18 | 4,000                        | 31.9            |
| 7-223-148 | 6624-200 | 200  | 165 | 61 | 20 | 127 | 253,5 | 60 | 18 | 4,500                        | 58.3            |