

6830

PRECISION COMPACT VISE

Features:

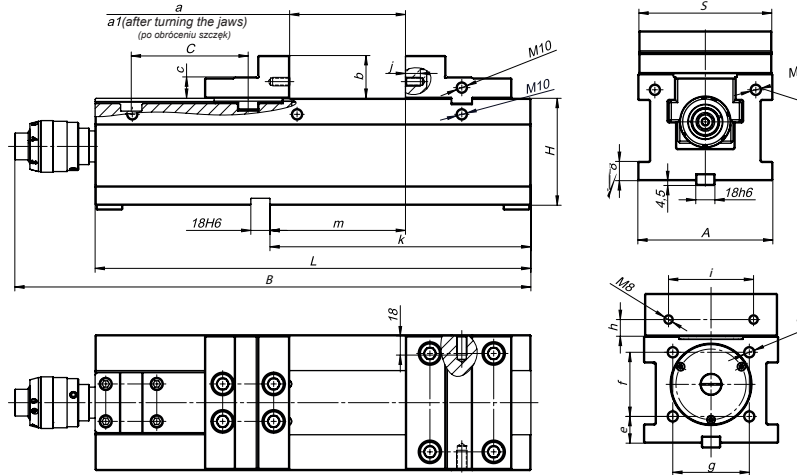
- High body rigidity
- High repeatability of workpiece positioning
- Reversible fixed and movable jaw
- Possibility of using replaceable clamping inserts
- Body and jaws are made of high-quality alloy steel hardened to 58 + 62 HRC
- The ability to work in a vertical position without the need for a pallet
- Possibility of setting the vice on side surfaces of the body

Application:

- Designed for precise milling and grinding work

Standard accessories:

- Wrench
- Slot nuts
- Vise clamps



Code No.	Type	S	L	H -0.01	A	B	C	a	a1	b	c	M	e	f	g	h	i	j	k	m ±0.015	Clamping force [lbf]				Weight [lbs]
																					Position 1	Position 2	Position 3	Position 4	
7-223-406	6830-125-410-336	125	410	100	127	486	110	0±220	116±336	40	20	M10	25	60	72	15.6	80	14	245.5	127.5	2,248	4,496	6,744	8,992	86
7-223-408	6830-160-540-464	160	540	115	162	621	2x110	0±333	131±464	50	25	M12	25	75	110	19.6	100	16	197	70	4,496	8,992	13,488	-	167

6710

PNEUMATICALLY OPERATED

Features:

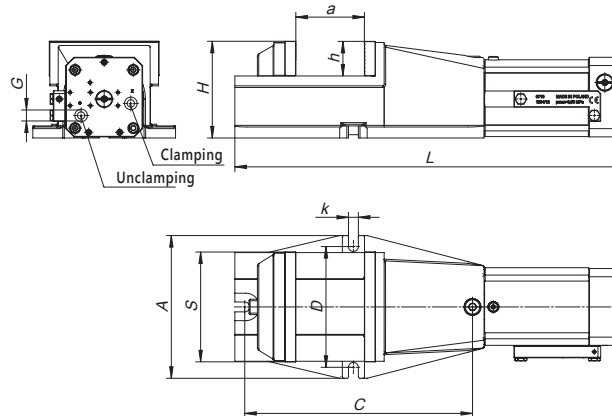
- Pneumatic system makes operation of the vice easy
- Removable grooved jaw inserts are hardened and ground
- Sturdy body
- Wide range of clamping
- Equipped with a safety valve

Application:

- These heavy duty machine vises are used in operations where a large clamping force is required

Standard accessories:

- Slot nuts



Accessories 19-31

Code No.	Type	A	H	L	a max	h	k	C	D	G	Jaw stroke	Air consumption	Clamping force for 0,63 MPa	Weight
		[mm]									[in]	[mm]	[dm³]	
7-265-005	6710-125	180	129	553	100	40	14	274	150	G3/8"	7	1.3	3,000	72.6
7-265-010	6710-160	225	150	621	125	50	18	337	185	G3/8"	8	1.6	3,700	110.4
7-265-015	6710-200	260	176	709	160	63	18	415	220	G3/8"	9	2.5	4,600	162.8