



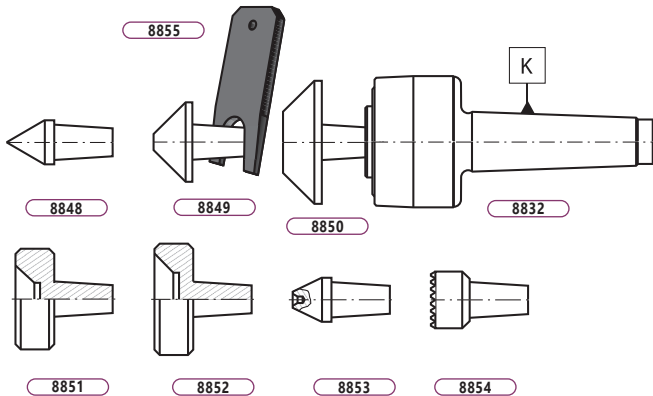
REVOLVING CENTERS WITH INTERCHANGEABLE INSERTS



- SET PROVIDED WITH MAIN BODY AND SEVEN INSERTS, EXTRACTION TOOL, AND PLASTIC CASE

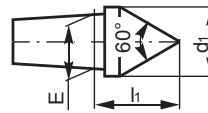
8832-KPL

- Revolving centers with interchangeable inserts
- Set provided with main body and eight different inserts in plastic case



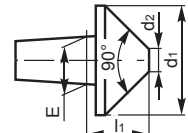
K MT	Max. weight [lbs]	RPM	Max. concentr. error [in]	Code No.	Max. concentr. error [in]	Code No.
			Precision		Standard	
2	154	5,000	0.0004	7-570-002	0.0008	7-570-0020
3	264	4,000	0.0004	7-570-003	0.0008	7-570-0030
4	616	3,000	0.0004	7-570-004	0.0008	7-570-0040
5	1,430	2,500	0.0006	7-570-005	0.0012	7-570-0050
6	2,640	2,000	0.0006	7-570-006	0.0012	7-570-0060

8848



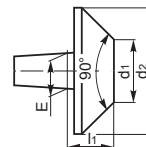
Code No.	W*	d ₁	E	I ₁
7-570-202	2	0.59	0.39	0.75
7-570-203	3	0.79	0.59	0.98
7-570-204	4	0.98	0.79	1.18
7-570-205	5	1.26	0.98	1.38
7-570-206	6	1.42	1.18	1.73

8849



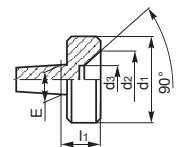
Code No.	W*	d ₁	d ₂	E	I ₁
7-570-302	2	0.87	0.12	0.39	0.59
7-570-303	3	1.42	0.24	0.59	0.87
7-570-304	4	1.77	0.39	0.79	0.98
7-570-305	5	2.20	0.55	0.98	1.18
7-570-306	6	2.76	0.71	1.18	1.42

8850



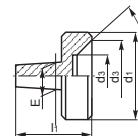
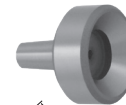
Code No.	W*	d ₁	d ₂	E	I ₁
7-570-402	2	0.71	1.46	0.39	0.59
7-570-403	3	1.30	2.48	0.59	0.87
7-570-404	4	1.38	2.76	0.79	0.98
7-570-405	5	1.50	3.15	0.98	1.18
7-570-406	6	1.97	3.94	1.18	1.42

8851



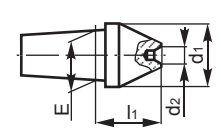
Code No.	W*	d ₁	d ₂	d ₃	E	I ₁
7-570-502	2	0.87	0.71	0.31	0.39	0.59
7-570-503	3	1.42	1.10	0.47	0.59	0.87
7-570-504	4	1.77	1.46	0.67	0.79	0.98
7-570-505	5	2.20	1.73	0.79	0.98	1.18
7-570-506	6	2.76	2.28	0.94	1.18	1.42

8852



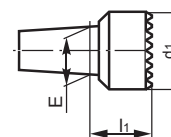
Code No.	W*	d ₁	d ₂	d ₃	E	I ₁
7-570-602	2	1.18	0.98	0.59	0.39	0.59
7-570-603	3	1.77	1.50	0.87	0.59	0.87
7-570-604	4	2.48	2.09	1.18	0.79	0.98
7-570-605	5	2.76	2.36	1.42	0.98	1.18
7-570-606	6	3.94	3.46	2.13	1.18	1.42

8853



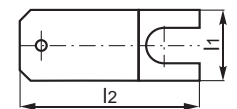
Code No.	W*	d ₁	d ₂	E	I ₁
7-570-702	2	0.59	0.05	0.39	0.59
7-570-703	3	0.79	0.05	0.59	0.87
7-570-704	4	0.98	0.10	0.79	0.98
7-570-705	5	1.26	0.10	0.98	1.18
7-570-706	6	1.42	0.16	1.18	1.42

8854



Code No.	W*	d ₁	E	I ₁
7-570-802	2	0.71	0.39	0.59
7-570-803	3	0.98	0.59	0.87
7-570-804	4	1.26	0.79	0.98
7-570-805	5	1.77	0.98	1.18
7-570-806	6	2.20	1.18	1.42

8855



Code No.	W*	I ₁	I ₂
7-570-902	2	0.79	2.36
7-570-903	3	1.18	3.15
7-570-904	4	1.57	3.94
7-570-905	5	1.97	4.72
7-570-906	6	2.36	6.30