



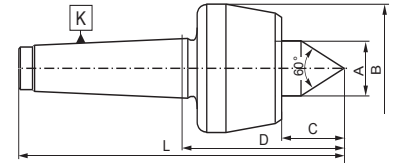
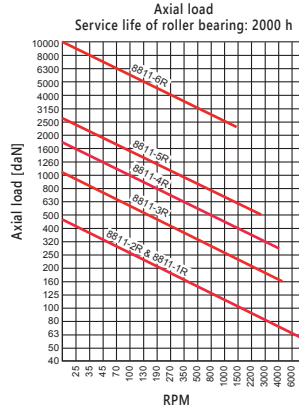
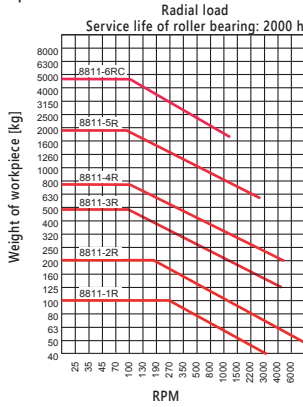
# R-SERIES LIVE CENTERS

- HIGH PRECISION TRIPLE BEARING DESIGN
- SEALED TO PROTECT BEARINGS FROM CONTAMINATION



## 8811 R

- Revolving centers with 60° point

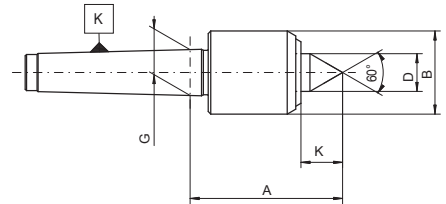
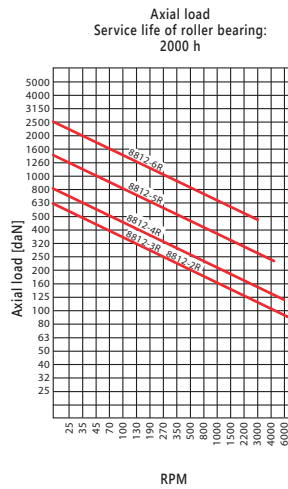
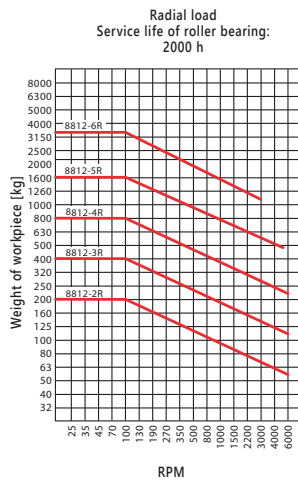


\*Slim body design    \*\*Heavy duty

| K MT  | Max. weight [lbs] | RPM   | Max. concentr. err. | Code No.   | Max. concentr. err. | Code No.   | A [in] | B [in] | C [in] | D [in] | L [in] |
|-------|-------------------|-------|---------------------|------------|---------------------|------------|--------|--------|--------|--------|--------|
|       |                   |       | [in] Precision      |            | [in] Standard       |            |        |        |        |        |        |
| 1     | 220               | 7,000 | -                   | -          | 0.0002              | 7-568-001  | 0.59   | 1.42   | 0.67   | 2.38   | 4.49   |
| 2     | 440               | 7,000 | 0.0001              | 7-568-102  | 0.0002              | 7-568-002  | 0.79   | 1.77   | 0.93   | 2.54   | 5.06   |
| 3RL*  | 880               | 6,300 | 0.0001              | 7-568-103L | 0.0002              | 7-568-003L | 0.87   | 1.97   | 1.08   | 2.76   | 5.94   |
| 3     | 1,100             | 5,000 | 0.0001              | 7-568-103  | 0.0002              | 7-568-003  | 0.98   | 2.36   | 1.20   | 3.11   | 6.30   |
| 4     | 1,760             | 3,800 | 0.0001              | 7-568-104  | 0.0002              | 7-568-004  | 1.26   | 2.76   | 1.57   | 4.00   | 8.03   |
| 5     | 4,400             | 3,000 | 0.0001              | 7-568-105  | 0.0002              | 7-568-005  | 1.57   | 3.54   | 1.95   | 5.04   | 10.14  |
| 6     | 7,700             | 2,600 | -                   | -          | 0.0004              | 7-568-006  | 1.97   | 4.13   | 2.26   | 5.98   | 13.15  |
| 6RC** | 11,000            | 1,500 | -                   | -          | 0.0004              | 7-568-006C | 2.46   | 5.51   | 2.64   | 7.64   | 14.80  |

## 8812 R

- Revolving centers with 60° point and small body diameter



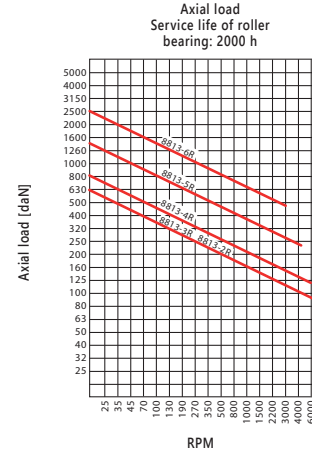
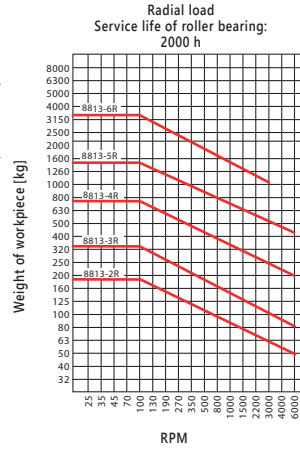
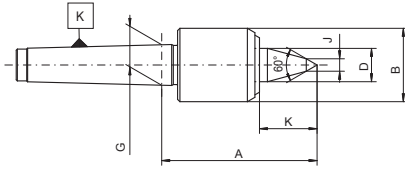
| K MT | Max. weight [lbs] | RPM   | Max. concentr. error [in] | Code No.  | A [in] | B [in] | D [in] | G [in] | K [in] |
|------|-------------------|-------|---------------------------|-----------|--------|--------|--------|--------|--------|
| 2    | 440               | 7,000 | 0.0002                    | 7-563-002 | 2.44   | 1.26   | 0.59   | 0.70   | 0.71   |
| 3    | 880               | 7,000 | 0.0002                    | 7-563-003 | 2.44   | 1.34   | 0.59   | 0.94   | 0.71   |
| 4    | 1,760             | 6,300 | 0.0002                    | 7-563-004 | 2.97   | 1.65   | 0.79   | 1.23   | 0.98   |
| 5    | 3,520             | 4,300 | 0.0004                    | 7-563-005 | 4.09   | 2.28   | 1.18   | 1.75   | 1.34   |
| 6    | 7,700             | 3,000 | 0.0008                    | 7-563-006 | 5.63   | 3.15   | 1.65   | 2.49   | 1.93   |

- HIGH PRECISION TRIPLE BEARING DESIGN
- SEALED TO PROTECT BEARINGS FROM CONTAMINATION



### 8813 R

- Extended revolving centers with 60° point and small body diameter

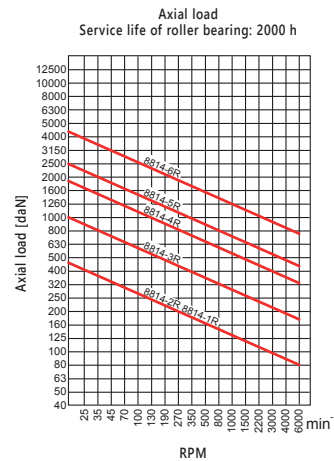
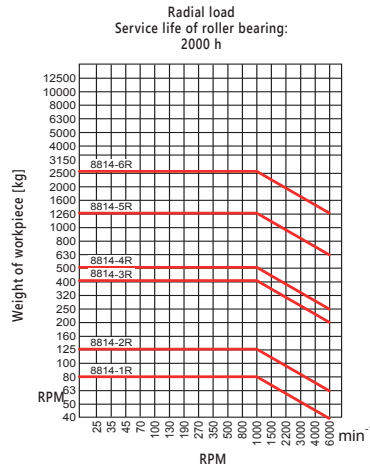
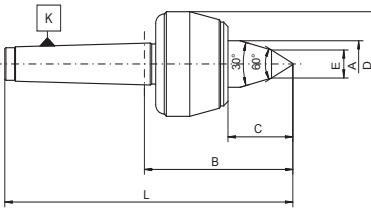


| K MT | Max. weight [lbs] | RPM   | Max. concentr. error [in] | Code No.  | A [in] | B [in] | D [in] | G [in] | K [in] | J [in] |
|------|-------------------|-------|---------------------------|-----------|--------|--------|--------|--------|--------|--------|
| 2    | 374               | 7,000 | 0.0003                    | 7-562-002 | 2.87   | 1.26   | 0.59   | 0.70   | 1.14   | 0.39   |
| 3    | 748               | 7,000 | 0.0003                    | 7-562-003 | 2.91   | 1.34   | 0.59   | 0.94   | 1.18   | 0.43   |
| 4    | 1,540             | 6,300 | 0.0003                    | 7-562-004 | 3.48   | 1.65   | 0.79   | 1.23   | 1.50   | 0.51   |
| 5    | 3,080             | 4,300 | 0.0004                    | 7-562-005 | 4.69   | 2.28   | 1.18   | 1.75   | 1.93   | 0.55   |
| 6    | 6,600             | 3,000 | 0.0008                    | 7-562-006 | 6.46   | 3.15   | 1.65   | 2.49   | 2.76   | 0.71   |



### 8814 R

- Extended revolving centers with 60° point



| K MT | Max. weight [lbs] | RPM   | Max. concentr. error [in] | Code No.  | A [in] | B [in] | C [in] | D [in] | E [in] | L [in] |
|------|-------------------|-------|---------------------------|-----------|--------|--------|--------|--------|--------|--------|
| 1    | 176               | 7,000 | 0.0004                    | 7-560-001 | 0.59   | 2.62   | 0.91   | 1.42   | 0.35   | 4.72   |
| 2    | 308               | 7,000 | 0.0002                    | 7-560-002 | 0.79   | 2.93   | 1.32   | 1.77   | 0.39   | 5.45   |
| 3    | 880               | 5,000 | 0.0002                    | 7-560-003 | 0.98   | 3.62   | 1.71   | 2.36   | 0.47   | 6.81   |
| 4    | 1,100             | 3,800 | 0.0002                    | 7-560-004 | 1.26   | 4.47   | 2.05   | 2.76   | 0.55   | 8.50   |
| 5    | 2,640             | 3,000 | 0.0002                    | 7-560-005 | 1.57   | 5.68   | 2.57   | 3.54   | 0.63   | 10.74  |
| 6    | 5,500             | 2,600 | 0.0004                    | 7-560-006 | 1.97   | 6.71   | 3.05   | 4.13   | 0.71   | 13.88  |