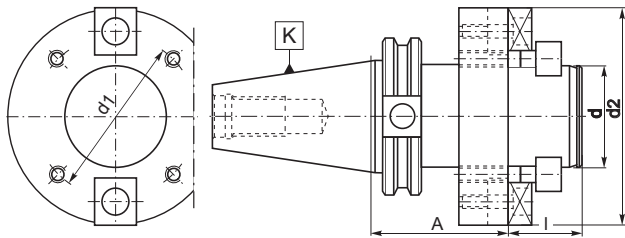


## 7382

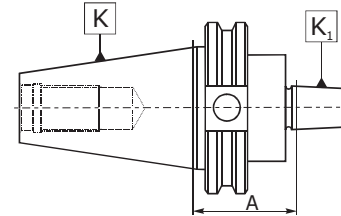
■ Face mill holders for milling cutters



Code No.	K 7:24	d [in]	A [in]	d <sub>1</sub> [in]	d <sub>2</sub> [in]	l [in]		
7-182-502	CAT50	2.00	2.40	4.00	4.85	0.398	7-182-802	7-182-902
7-182-504	CAT50	2.00	4.00	4.00	4.85	0.398	7-182-802	7-182-902
7-182-506	CAT50	2.00	6.00	4.00	4.85	0.398	7-182-802	7-182-902
7-182-512	CAT50	2.50	2.40	4.00	5.00	1.125	7-182-804	7-182-904
7-182-514	CAT50	2.50	4.00	4.00	5.00	1.125	7-182-804	7-182-904
7-182-516	CAT50	2.50	6.00	4.00	5.00	1.125	7-182-804	7-182-904

## 5357

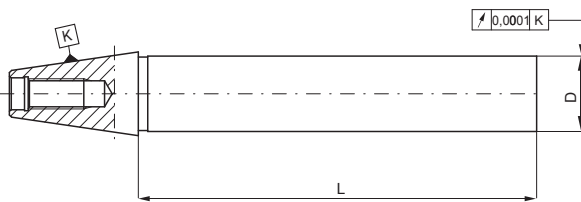
■ ANSI B5.50/CAT drill chuck adapters for Jacobs taper



Code No.	K 7:24	K <sub>1</sub> Jacobs	A [in]
7-181-401	CAT40	J1	1.50
7-181-402	CAT40	J2	1.50
7-181-433	CAT40	J33	1.50
7-181-403	CAT40	J3	1.50
7-181-404	CAT40	J4	1.50
7-181-405	CAT40	J5	1.50
7-181-406	CAT40	J6	1.50
7-181-502	CAT50	J2	1.50
7-181-533	CAT50	J33	1.50
7-181-503	CAT50	J3	1.50
7-181-504	CAT50	J4	1.50
7-181-505	CAT50	J5	1.50
7-181-506	CAT50	J6	1.50

## 2852

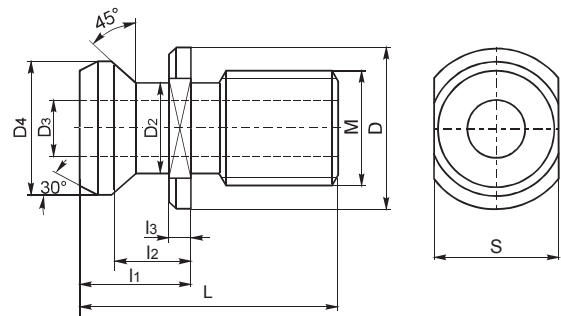
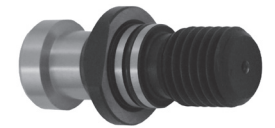
■ Control arbor



Code No.	K 7:24	D [mm]	L [mm]
7-184-202	CAT40	40	300
7-184-204	CAT50	50	300

## 9886

■ Pull studs with through hole



Code No.	Size	M	D [in]	D <sub>2</sub> [in]	D <sub>3</sub> [in]	D <sub>4</sub> [in]	L [in]	l <sub>1</sub> [in]	l <sub>2</sub> [in]	l <sub>3</sub> [in]	S [in]
7-189-905	CAT40	5/8-11	0.898	0.492	0.280	0.744	1.496	0.640	0.437	0.118	0.748
7-189-950	CAT50	1-8	1.400	0.823	0.500	1.146	2.244	1.000	0.700	0.197	1.185
7-189-941	HAAS 40	5/8-11	1.280	0.394	0.118	0.591	2.299	1.260	0.984	0.236	0.748