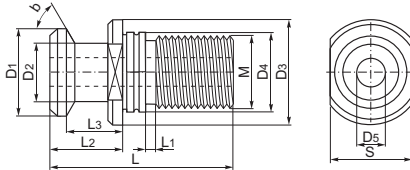
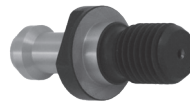


9883 A

■ Pull studs with through hole (MAS 403-BT)

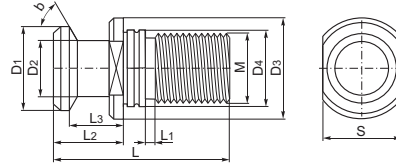


Code No.	Size	L [mm]	b [mm]	M [mm]	L1 [mm]	L2 [mm]	L3 [mm]	D1 [mm]	D2 [mm]	D3 [mm]	D4 [mm]	D5 [mm]	S [mm]
7-080-842	BT40	60	45°	M16	4	35	28	15	10	23	17	4	19
7-080-844	BT40	60	60°	M16	4	35	28	15	10	23	17	4	19
7-080-846	BT40	60	90°	M16	4	35	28	15	10	23	17	4	19
7-080-852	BT50	85	45°	M24	8	45	35	23	17	38	25	6	30
7-080-854	BT50	85	60°	M24	8	45	35	23	17	38	25	6	30
7-080-856	BT50	85	90°	M24	8	45	35	23	17	38	25	6	30



9883 B

■ Pull studs without through hole (MAS 403-BT)



Code No.	Size	L [mm]	b [mm]	M [mm]	L1 [mm]	L2 [mm]	L3 [mm]	D1 [mm]	D2 [mm]	D3 [mm]	D4 [mm]	S [mm]
7-080-932	BT30	43	45°	M12	2	23	18	11	7	16,5	12,5	13
7-080-934	BT30	43	60°	M12	2	23	18	11	7	16,5	12,5	13
7-080-942	BT40	60	45°	M16	4	35	28	15	10	23	17	19
7-080-943	BT40	60	60°	M16	4	35	28	15	10	23	17	19
7-080-944	BT40	60	90°	M16	4	35	28	15	10	23	17	19
7-080-945	BT40	120	45°	M12	64	35	28	15	10	23	17	19
7-080-946	BT40	120	60°	M12	64	35	28	15	10	23	17	19
7-080-947	BT40	120	90°	M12	64	35	28	15	10	23	17	19
7-080-948	BT40	125	45°	M16	69	35	28	15	10	23	17	19
7-080-949	BT40	125	60°	M16	69	35	28	15	10	23	17	19
7-080-950	BT40	125	90°	M16	69	35	28	15	10	23	17	19
7-080-952	BT50	85	45°	M24	8	45	35	23	17	38	25	30
7-080-954	BT50	85	60°	M24	8	45	35	23	17	38	25	30
7-080-956	BT50	85	90°	M24	8	45	35	23	17	38	25	30
7-080-958	BT50	125	45°	M24	48	45	35	23	17	38	25	30
7-080-960	BT50	125	60°	M24	48	45	35	23	17	38	25	30
7-080-962	BT50	125	90°	M24	48	45	35	23	17	38	25	30

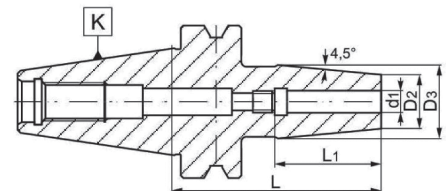
Code No.	K 7:24	d ₁ [mm]	L [mm]	L ₁ [mm]	D ₂ [mm]	D ₃ [mm]
7-177-402	BT40	3	80	36	14	22
7-177-404	BT40	3	120	36	14	22
7-177-406	BT40	3	160	36	14	22
7-177-408	BT40	4	80	36	14	22
7-177-410	BT40	4	120	36	14	22
7-177-412	BT40	4	160	36	14	22
7-177-414	BT40	5	80	36	16	22
7-177-416	BT40	5	120	36	16	22
7-177-418	BT40	5	160	36	16	22
7-177-420	BT40	6	90	36	21	27
7-177-422	BT40	6	120	36	21	27
7-177-424	BT40	6	160	36	21	27
7-177-426	BT40	8	90	36	21	27
7-177-428	BT40	8	120	36	21	27
7-177-430	BT40	8	160	36	21	27
7-177-432	BT40	10	90	42	24	32
7-177-434	BT40	10	120	42	24	32
7-177-436	BT40	10	160	42	24	32
7-177-438	BT40	12	90	47	24	32
7-177-440	BT40	12	120	47	24	32

Code No.	K 7:24	d ₁ [mm]	L [mm]	L ₁ [mm]	D ₂ [mm]	D ₃ [mm]
7-177-442	BT40	12	160	47	24	32
7-177-444	BT40	14	90	47	27	34
7-177-446	BT40	14	120	47	27	34
7-177-448	BT40	14	160	47	27	34
7-177-450	BT40	16	90	50	27	34
7-177-452	BT40	16	120	50	27	34
7-177-454	BT40	16	160	50	27	34
7-177-456	BT40	18	90	50	33	42
7-177-458	BT40	18	120	50	33	42
7-177-460	BT40	18	160	50	33	42
7-177-462	BT40	20	90	52	33	42
7-177-464	BT40	20	120	52	33	42
7-177-466	BT40	20	160	52	33	42
7-177-468	BT40	25	100	58	44	53
7-177-470	BT40	25	120	58	44	53
7-177-472	BT40	25	160	58	44	53
7-177-474	BT40	32	100	58	44	53
7-177-502	BT50	6	100	36	21	27
7-177-504	BT50	8	100	36	21	27
7-177-506	BT50	10	100	42	24	32
7-177-508	BT50	12	100	47	24	32



7632

■ Shrink fit holders for mounting of solid carbide and HSS cutters



Code No.	K 7:24	d ₁ [mm]	L [mm]	L ₁ [mm]	D ₂ [mm]	D ₃ [mm]
7-177-510	BT50	14	100	47	27	34
7-177-512	BT50	16	100	50	27	34
7-177-514	BT50	18	100	50	33	42
7-177-516	BT50	20	100	52	33	42
7-177-518	BT50	25	110	58	44	53
7-177-520	BT50	32	110	58	44	53