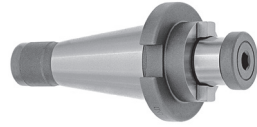
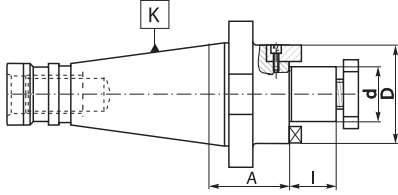


1
2
3
4
5

7311 QC



- Shell mill holders
- Compatible with Ericson Quick Change

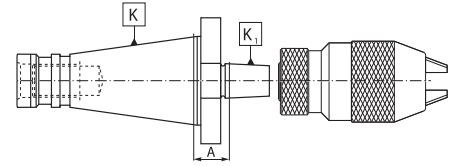


Code No.	K 7:24	d [in]	A [in]	D [in]	I [in]		
7-060-005Q	NMTB 30	0.50	2.000	1.375	0.55	7-080-005	7-080-105
7-060-010Q	NMTB 30	0.75	2.000	1.75	0.68	7-080-010	7-080-110
7-060-015Q	NMTB 30	1.00	2.000	2.25	0.68	7-080-015	7-080-115
7-060-020Q	NMTB 30	1.25	2.000	2.75	0.68	7-080-020	7-080-120
7-060-030Q	NMTB 40	0.75	2.000	1.75	0.68	7-080-010	7-080-110
7-060-035Q	NMTB 40	1.00	2.000	2.25	0.68	7-080-015	7-080-115
7-060-040Q	NMTB 40	1.25	2.000	2.75	0.68	7-080-020	7-080-120
7-060-045Q	NMTB 40	1.50	2.000	3.75	0.93	7-080-025	7-080-125
7-060-050Q	NMTB 40	2.00	2.500	4.875	0.93	7-080-030	7-080-130
7-060-060Q	NMTB 50	0.75	1.250	1.75	0.68	7-080-010	7-080-110
7-060-065Q	NMTB 50	1.00	1.875	2.25	0.68	7-080-015	7-080-115
7-060-070Q	NMTB 50	1.25	1.875	2.75	0.68	7-080-020	7-080-120
7-060-075Q	NMTB 50	1.50	1.875	3.75	0.93	7-080-025	7-080-125
7-060-080Q	NMTB 50	2.00	1.875	4.875	0.93	7-080-030	7-080-130

5370

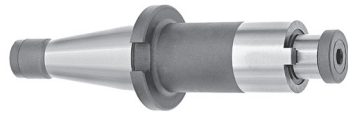


- Jacobs Taper adapters
- Compatible with Ericson Quick Change



Code No.	K 7:24	Jacobs Taper	A [in]
7-052-033Q	NMTB 30	JT3	1.50
7-052-0333Q	NMTB 30	JT33	1.50
7-052-036Q	NMTB 30	JT6	1.50
7-052-041Q	NMTB 40	JT1	1.50
7-052-042Q	NMTB 40	JT2	1.50
7-052-043Q	NMTB 40	JT3	1.50
7-052-0433Q	NMTB 40	JT33	1.50
7-052-046Q	NMTB 40	JT6	1.50
7-052-053Q	NMTB 50	JT3	2.00
7-052-054Q	NMTB 50	JT4	2.00
7-052-055Q	NMTB 50	JT5	2.00

7311 QC L



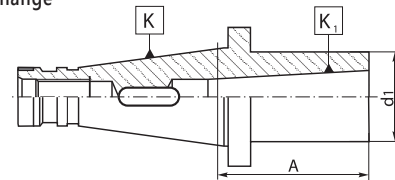
- Shell mill holders with 4" extension
- Compatible with Ericson Quick Change

Code No.	K 7:24	Arbor Dia [in]	Gage Length [in]		
7-075-002Q	NMTB 40	0.75	4.00	7-080-010	7-080-110
7-075-005Q	NMTB 40	1.00	4.00	7-080-015	7-080-115
7-075-010Q	NMTB 50	1.00	4.00	7-080-015	7-080-115
7-075-015Q	NMTB 50	1.25	4.00	7-080-020	7-080-120
7-075-020Q	NMTB 50	1.50	4.00	7-080-025	7-080-125

1657 QC



- Morse taper adapters for tools with tang
- Compatible with Ericson Quick Change



Code No.	K 7:24	K ₁ MT	A [in]	d ₁ [in]
7-100-005Q	NMTB 40	2	1.969	1.260
7-100-010Q	NMTB 40	3	2.559	1.575
7-100-015Q	NMTB 40	4	3.740	1.890
7-100-024Q	NMTB 50	2	0.906	1.260
7-100-025Q	NMTB 50	3	1.299	1.575
7-100-030Q	NMTB 50	4	2.087	1.890
7-100-035Q	NMTB 50	5	3.386	2.480