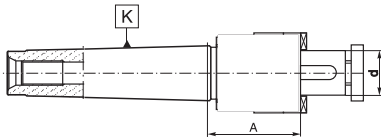


7411

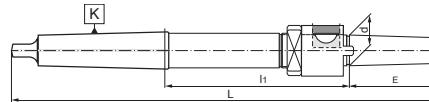
- Shell mill arbors with MT shank



Code No.	K MT	d [in]	A [in]
7-050-010	4	3/4	1.122
7-050-015	4	1	1.122
7-050-020	4	1-1/4	1.122
7-050-025	4	1-1/2	1.122
7-050-030	5	1	1.201
7-050-035	5	1-1/4	1.122
7-050-040	5	1-1/2	1.122
7-050-05	5	2	1.122

5310

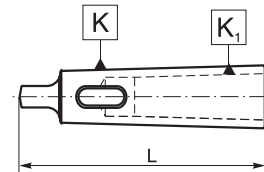
- Driver arbors for reamers



Code No.	K MT	d [in]	L [in]	E [in]	L ₁ [in]			
7-067-004	2	3/8	9	2.25	3.80	7-068-954	7-068-904	7-068-804
7-067-005	2	1/2	9.50	2.50	4.05	7-068-955	7-068-905	7-068-804
7-067-006	3	5/8	10	2.75	3.55	7-068-956	7-068-906	7-068-806
7-067-007	3	3/4	11	3.00	4.30	7-068-957	7-068-907	7-068-807
7-067-008	4	1	12	3.50	3.87	7-068-958	7-068-908	7-068-807
7-067-009	4	1-1/4	13	3.75	4.62	7-068-959	7-068-909	7-068-809
7-067-010	5	1-1/2	15.55	4.50	5.67	7-068-960	7-068-910	7-068-810
7-067-011	5	1-3/4	16.73	4.50	5.35	7-068-961	7-068-911	7-068-811
7-067-012	5	2	17.52	5.00	5.63	7-068-962	7-068-912	7-068-811

1751

- Reduction sleeves for Morse tapers



* completely hardened, grounded internally and externally

Code No.	K MT	K ₁ MT	L [in]
7-450-003	1	0	85
7-450-005	2	1	92
7-450-010	3	1	99
7-450-015	3	2	112
7-450-020	4	1	124
7-450-025	4	2	124
7-450-030	4	3	140
7-450-035	5	1	156
7-450-040	5	2	156
7-450-045	5	3	156
7-450-050	5	4	174
7-450-051	6	2	218
7-450-052	6	3	218
7-450-055	6	4	218
7-450-060	6	5	218

7725-M

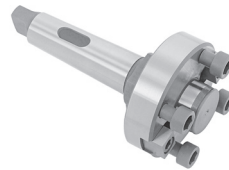
- Annular cutter holders for MT shank



Code No.	MT Shank	Type	Cutter Shank Size [in]	Gage Length [in]
7-981-300	2	HEN-3	3/4	2
7-981-306	2	HEN-3-6	3/4	6
7-981-400	3	HEN-4	3/4	2
7-981-406	3	HEN-4-6	3/4	6
7-981-412	3	HEN-4-12	3/4	12
7-981-800	3	HEN-8	1-1/4	2-3/4

2842

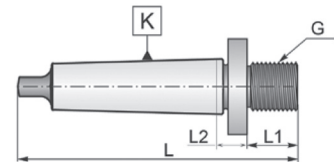
- MT Face mill holders
- Holder have four mounting holes with the thread 5/8-11 on 4" bolt circle to hold 8" or larger milling cutters



Code No.	MT Shank	Arbor dia [in]	Arbor Length [in]	Gage Length [in]
7-170-035	5	2	9.57	2
7-170-045	5	2-1/2	9.57	6
7-170-040	6	2	13.58	2
7-170-050	6	2-1/2	13.58	6

7470

- MT to threaded mount adapter



Code No.	K MT	Thread G	L [in]	L ₁ [in]	L ₂ [in]
7-052-610	2	3/8-24	3.7	0.6	0.197
7-052-613	2	1/2-20	4.0	0.6	0.472
7-052-616	2	5/8-16	4.1	0.7	0.500