

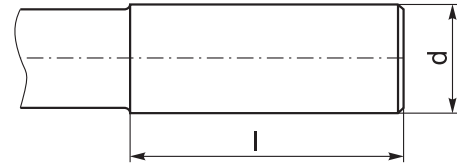
CYLINDRICAL SHANK

Standard features of the tools:

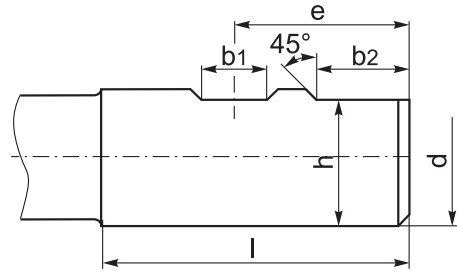
- Manufactured with Chrome Manganese steel
- Carburized with depth of case 0.7 mm
- Hardened and precision ground
- Surface hardness HRC 58±2

d [in]	l [in]	e [in]	b ₁ min [in]	b ₁ max [in]	h [in]	b ₂ [in]
3/8	1-9/16	25/32	0.280	0.282	0.325	-
1/2	1-25/32	57/64	0.330	0.332	0.440	-
5/8	1-29/32	61/64	0.400	0.402	0.560	-
3/4	2-1/32	1-1/64	0.455	0.457	0.685	-
7/8	2-1/32	1-1/64	0.455	0.457	0.810	1/2
1	2-9/32	1-9/64	0.515	0.517	0.925	1/2
1-1/4	2-9/32	1-9/64	0.515	0.517	1.156	1/2
1-1/2	2-11/16	1-3/16	0.515	0.517	1.406	9/16
2	3-1/4	1-27/32	0.700	0.702	1.900	27/32
2-1/2	3-1/2	1-15/16	0.700	0.702	2.400	27/32

Type A

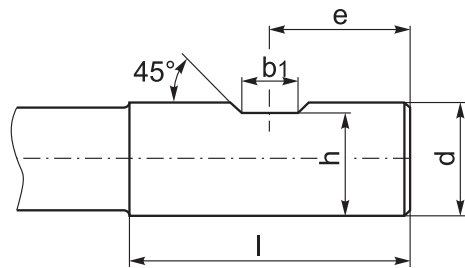


Type B



- Type B - with two clamping flats (Weldon)
- d = 7/8" - 2-1/2"

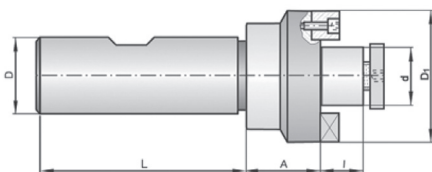
Type B



- Type B - with one clamping flat (Weldon)
- d = 3/8" - 2-1/2"

7567

- Straight shank shell mill arbors



Code No.	D [in]	d [in]	A [in]	I [in]	D1 [in]	L [in]		
7-064-005	3/4	0.75	0.703	0.672	1.750	2.00	7-080-110	7-080-010
7-064-010	1	1.00	0.714	0.672	2.125	2.28	7-080-115	7-080-015
7-064-015	1	1.25	0.845	0.672	2.500	2.28	7-080-120	7-080-020
7-064-025	1-1/4	0.75	1.000	0.690	1.770	2.28	7-080-110	7-080-010
7-064-030	1-1/4	1.00	1.000	0.690	2.280	2.28	7-080-115	7-080-015

7725-S

- Annular cutter holders for straight shank



Code No.	Type	Shank Size [in]	Shank Type	Cutter Shank Size [in]	Gage Length [in]
7-980-100	HEN-1	1/2	3 flats	3/4	2-1/8
7-980-200	HEN-2	3/4	3 flats	3/4	2
7-980-206	HEN-2-6	3/4	3 flats	3/4	3
7-980-212	HEN-2-12	3/4	3 flats	3/4	12
7-983-906	HEN-9-6	3/4	2 flats	3/4	6
7-980-900H	Spare ejecting spring	3/4	-	1-1/4	12