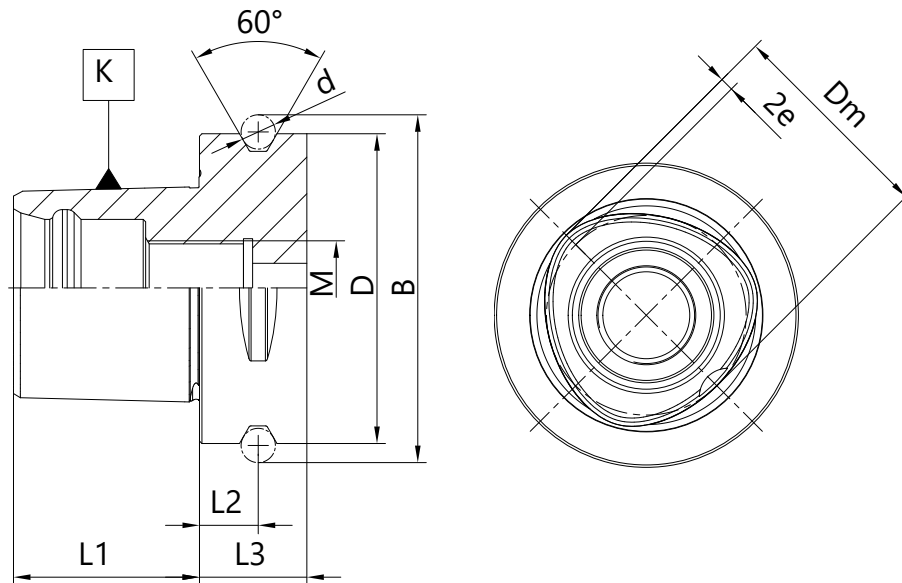


PSC POLYGONAL TAPER

- Manufactured with chrome manganese steel
- Carburized with depth of case 0.7 mm
- Hardened and precision ground
- Surface hardness RC 58±2
- Balanced in grade G2.5/25,000 RPM



K PSC	D [mm]	B [mm]	L1 [mm]	L2 [mm]	L3 [mm]	d [mm]	M	Dm [mm]	e [mm]
32	32	39	19	6	15	5	M12x1.5	22	0.7
40	40	46	24	8	20	5	M14x1.5	28	0.9
50	50	59.3	30	10	20	7	M16x1.5	35	1.12
63	63	70.7	38	12	22	7	M20x2	44	1.4
80	80	86	48	12	30	7	M20x2	55	2
100	100	110	48	16	32	10	M20x2	55	2