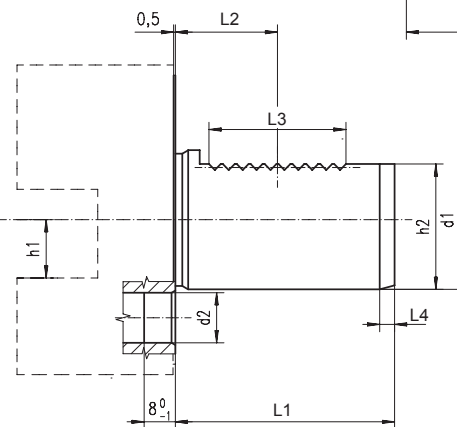
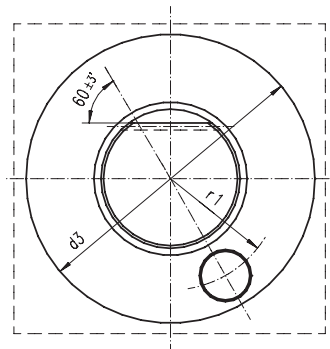
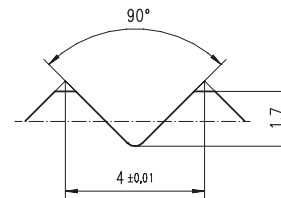


d1 h6	L1 ±0,3	d2	d2	d3	h1 max.	h2 ±0,1	L2 ±0,05	L3 min.	L4 +1	r1 ±0.02
[mm]										
16	32	H6	8	40	12	15.0	12.7	16	2	14.5
20	40	H6	10	50	16	18.0	21.7	24	2	18.0
25	48	H6	10	58	16	23.5	21.7	24	2	21.0
30	55	H8	14	68	20	27.0	29.7	40	2	25.0
40	63	H8	14	83	25	36.0	29.7	40	3	32.0
50	78	H8	16	98	32	45.0	35.7	48	3	37.0

DIN 69880

- Designed for use with CNC turning centers
- Rotary heads for VDI Toolholders according to DIN 69880



USE OF RADIAL TOOLHOLDERS WITH COUNTERCLOCKWISE SPINDLE ROTATION

USE OF RADIAL TOOLHOLDERS WITH CLOCKWISE SPINDLE ROTATION

USE OF RADIAL TOOLHOLDERS WITH COUNTERCLOCKWISE SPINDLE ROTATION

USE OF RADIAL TOOLHOLDERS WITH CLOCKWISE SPINDLE ROTATION

