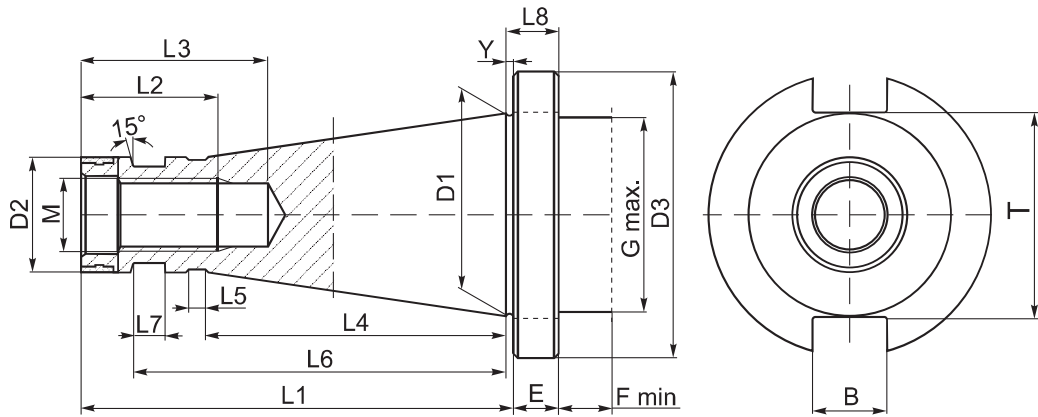
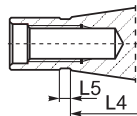


NMTB TAPER

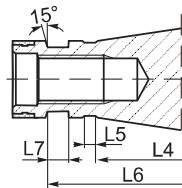
- Standard features of the tools:
- Manufactured with Chrome Manganese steel
- Carburized with depth of case 0.7 mm
- Hardened and precision ground
- Surface hardness HRC 58±2
- Taper angle: tolerance AT3



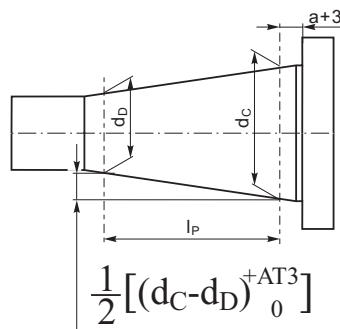
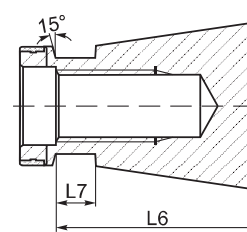
K-30



K-40



K-50



K	d _C -d _D [in]	l _P [in]	a [in]	AT3 [in]
30	0.482	1.654	0.079	0.0001
40	0.677	2.323	0.079	0.0001
50	1.056	3.622	0.118	0.0002

K 7:24	Me- asure	D1	D2	D3	L1	L2	L3	L4	L5	L6	L7	L8	B H12	T	E	M	Y	F	G
30	inches	1.250	0.673	1.811	2.756	0.945	1.378	1.906	0.118	-	-	0.423	0.634	1.276	0.345	1/2"x13 UNC-2B	0.078	0.335	1.181
30	mm	31.75	17.10	46.00	70.00	24.00	35.00	48.40	3.00	-	-	10.74	16.10	32.40	8.76	1/2"x13 UNC-2B	1.98	8.50	30.00
40	inches	1.750	0.984	2.500	3.740	1.181	1.614	2.575	0.197	3.228	0.276	0.392	0.634	1.772	0.314	5/8"x11 UNC-2B	0.078	0.453	1.654
40	mm	44.45	25.00	63.50	95.00	30.00	41.00	65.40	5.00	82.00	7.00	9.96	16.10	45.00	7.98	5/8"x11 UNC-2B	1.98	11.50	42.00
50	inches	2.750	1.559	3.500	5.118	1.772	2.362	-	-	4.528	0.524	0.594	1.012	2.780	0.453	1"x8 UNC-2B	0.142	0.453	2.480
50	mm	69.85	39.60	88.90	130.00	45.00	60.00	-	-	115.00	13.30	15.10	25.70	70.60	11.50	1"x8 UNC-2B	3.60	11.50	63.00