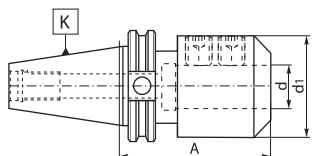


7636 AD



- Weldon type end mill holders
- Through the spindle coolant capacity



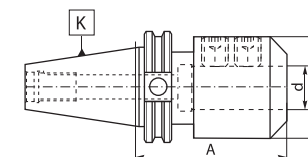
Code No. 15,000 RPM G6.3	Code No. 7000 RPM	K 7:24	d [in]	A [in]	d ₁ [in]	
7-185-002	-	CAT40	1/8	1.375	0.750	7-195-081
7-185-004	7-185-405	CAT40	1/8	2.500	0.750	7-195-081
7-185-006	-	CAT40	3/16	1.375	0.750	7-195-091
7-185-008	7-185-407	CAT40	3/16	2.500	0.750	7-195-091
-	7-185-4074	CAT40	3/16	4.000	0.750	7-195-091
7-185-014	7-185-409	CAT40	1/4	2.500	0.827	7-195-110
-	7-185-4094	CAT40	1/4	4.000	0.827	7-195-110
7-185-012	-	CAT40	1/4	1.375	0.827	7-195-110
7-185-020	7-185-4115	CAT40	5/16	2.500	1.000	7-195-301
7-185-018	-	CAT40	5/16	1.375	1.000	7-195-110
-	7-185-4117	CAT40	5/16	4.000	1.000	7-195-110
7-185-034	-	CAT40	1/2	1.750	1.250	7-195-210
7-185-024	-	CAT40	3/8	1.375	1.000	7-195-210
7-185-026	7-185-412	CAT40	3/8	2.500	1.000	7-195-210
-	7-185-4122	CAT40	3/8	5.000	1.000	7-195-210
7-185-030	7-185-4123	CAT40	7/16	2.500	1.150	7-195-210
-	7-185-4127	CAT40	7/16	4.000	1.150	7-195-210
7-185-036	7-185-413	CAT40	1/2	2.625	1.250	7-195-301
-	7-185-417	CAT40	1/2	5.000	1.250	7-195-301
7-185-042	7-185-431	CAT40	5/8	3.750	1.500	7-195-412
7-185-040	-	CAT40	5/8	1.750	1.250	7-195-412
-	7-185-437	CAT40	5/8	5.500	1.500	7-195-412
7-185-048	-	CAT40	3/4	1.750	1.750	7-195-513
7-185-050	7-185-441	CAT40	3/4	3.750	1.750	7-195-513
-	7-185-447	CAT40	3/4	5.500	1.750	7-195-513
7-185-056	7-185-450	CAT40	7/8	3.500	2.000	7-195-513 x2
-	7-185-451	CAT40	7/8	4.000	2.000	7-195-513 x2
7-185-054	-	CAT40	7/8	1.750	2.000	7-195-513 x2
7-185-060	-	CAT40	1	2.000	2.250	7-195-615 x2
7-185-062	7-185-461	CAT40	1	4.000	2.250	7-195-615 x2
-	7-185-465	CAT40	1	6.000	2.250	7-195-615 x2
-	7-185-470	CAT40	1.1/4	2.000	2.250	7-195-605
7-185-068	7-185-471	CAT40	1.1/4	4.250	2.500	7-195-615 x2
-	7-185-472	CAT40	1.1/4	4.375	2.500	7-195-615 x2
-	7-185-475	CAT40	1.1/4	6.000	2.500	7-195-615 x2
-	7-185-481	CAT40	1.1/2	4.625	2.750	7-195-615 x2
-	7-185-485	CAT40	1.1/2	6.000	2.750	7-195-615 x2

Code No. 15,000 RPM G6.3	Code No. 7000 RPM	K 7:24	d [in]	A [in]	d ₁ [in]	
-	7-185-509	CAT50	1/4	2.500	0.813	7-195-110
7-185-102	-	CAT50	1/4	1.375	0.813	7-195-110
-	7-185-5101	CAT50	1/4	4.000	0.813	7-195-210
7-185-108	-	CAT50	5/16	2.500	0.875	7-195-120
7-185-110	-	CAT50	3/8	1.375	0.375	7-195-210
-	7-185-511	CAT50	3/8	2.500	1.000	7-195-210
-	7-185-512	CAT50	3/8	2.500	1.000	7-195-210
-	7-185-513	CAT50	3/8	6.500	1.000	7-195-210
-	7-185-514	CAT50	3/8	8.000	1.000	7-195-210
7-185-120	7-185-516	CAT50	7/16	2.500	1.150	7-195-210
-	7-185-517	CAT50	7/16	4.500	1.150	7-195-210
7-185-124	-	CAT50	1/2	1.750	1.375	7-195-301
-	7-185-521	CAT50	1/2	2.625	1.250	7-195-301
-	7-185-522	CAT50	1/2	4.625	1.250	7-195-301
-	7-185-523	CAT50	1/2	6.625	1.250	7-195-301
-	7-185-526	CAT50	1/2	8.000	1.250	7-195-301
7-185-134	-	CAT50	5/8	1.750	1.750	7-195-412
-	7-185-531	CAT50	5/8	3.750	1.500	7-195-412
-	7-185-532	CAT50	5/8	5.750	1.500	7-195-412
-	7-185-533	CAT50	5/8	7.750	1.500	7-195-412
7-185-142	-	CAT50	3/4	1.750	1.750	7-195-513
-	7-185-541	CAT50	3/4	3.750	1.750	7-195-513
-	7-185-542	CAT50	3/4	5.375	1.750	7-195-513
-	7-185-543	CAT50	3/4	7.750	1.750	7-195-513
-	7-185-547	CAT50	3/4	12.000	1.190	7-195-508
-	7-185-551	CAT50	7/8	3.750	2.000	7-195-513 x2
-	7-185-552	CAT50	7/8	5.750	2.000	7-195-513 x2
-	7-185-553	CAT50	7/8	7.750	2.000	7-195-513 x2
7-185-152	-	CAT50	7/8	1.750	2.040	7-195-513 x2
7-185-160	-	CAT50	1	2.000	2.375	7-195-615 x2
-	7-185-561	CAT50	1	4.000	2.250	7-195-615 x2
-	7-185-562	CAT50	1	6.000	2.250	7-195-615 x2
-	7-185-563	CAT50	1	8.000	2.250	7-195-615 x2
-	7-185-567	CAT50	1	12.000	1.625	7-195-610
7-185-170	-	CAT50	1-1/4	2.000	2.750	7-195-615
-	7-185-571	CAT50	1-1/4	4.000	2.500	7-195-615 x2
-	7-185-572	CAT50	1-1/4	6.000	2.500	7-195-615 x2
-	7-185-573	CAT50	1-1/4	8.000	2.500	7-195-615 x2
-	7-185-577	CAT50	1-1/4	12.000	1.875	7-195-610 x2
7-185-180	-	CAT50	1-1/2	2.500	2.750	7-195-615
-	7-185-581	CAT50	1-1/2	4.000	2.750	7-195-615 x2
-	7-185-582	CAT50	1-1/2	6.000	2.750	7-195-615 x2
-	7-185-583	CAT50	1-1/2	8.000	2.750	7-195-615 x2
-	7-185-591	CAT50	2	5.625	3.750	7-195-824 x2
-	7-185-592	CAT50	2	7.625	3.750	7-195-824 x2
-	7-185-593	CAT50	2	9.625	3.750	7-195-824 x2
-	7-185-595	CAT50	2-1/2	6.000	4.000	7-195-824 x2

7636 M-AD



- Weldon type metric end mill holders
- Through the spindle coolant capacity
- Balancing on request - 15,000 RPM (G6.3)



Code No. 7000 RPM	K 7:24	d [mm]	A [in]	d ₁ [mm]	
7-185-6400	CAT40	6	2.50	25	7-195-006M
7-185-6402	CAT40	6	4.00	25	7-195-006M
7-185-6404	CAT40	8	2.50	28	7-195-008M
7-185-6406	CAT40	10	2.50	35	7-195-010M
7-185-6408	CAT40	12	2.50	42	7-195-012M
7-185-6410	CAT40	16	3.00	48	7-195-014M
7-185-6412	CAT40	20	3.00	52	7-195-016M
7-185-6414	CAT40	25	4.00	63	7-195-018M x2
7-185-6416	CAT40	25	6.00	63	7-195-018M x2
7-185-6418	CAT40	32	4.00	72	7-195-020M x2
7-185-6420	CAT40	32	6.00	72	7-195-020M x2
7-185-6500	CAT50	10	2.50	35	7-195-010M
7-185-6502	CAT50	10	4.50	35	7-195-010M
7-185-6504	CAT50	20	3.75	52	7-195-016M
7-185-6506	CAT50	16	3.75	48	7-195-014M
7-185-6508	CAT50	16	5.75	48	7-195-014M
7-185-6510	CAT50	12	4.75	42	7-195-012M
7-185-6512	CAT50	12	2.50	42	7-195-012M
7-185-6514	CAT50	20	5.75	52	7-195-016M
7-185-6516	CAT50	25	4.00	63	7-195-018M x2
7-185-6518	CAT50	25	6.00	63	7-195-018M x2
7-185-6520	CAT50	32	4.00	72	7-195-020M x2
7-185-6522	CAT50	32	6.00	72	7-195-020M x2
7-185-6524	CAT50	40	6.00	80	7-195-020M x2
7-185-6526	CAT50	40	4.00	80	7-195-020M x2
7-185-6528	CAT50	40	4.00	80	7-195-020M x2