



## PERMANENT MAGNETIC CHUCKS

- WITH CONTINUOUS TRANSVERSE POLE PITCH P=15MM, WITH NEODYMIUM MAGNETS, AMPLIFIED SYSTEM

243.11



### ■ APPLICATION

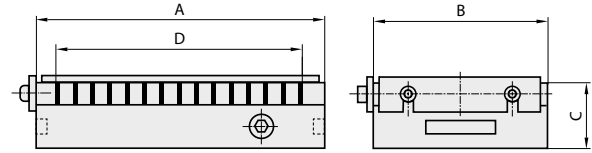
Suitable for heavy and rough machining. The dense magnetic field with maximum concentration opens up areas of application for small, medium and large workpieces, even with rough or uneven surfaces.

### ■ DESIGN

Neodymium magnet system with high holding force. ON/OFF control using a manual lever. In the OFF position, a low-strength opposite field facilitates removing of the workpieces. The magnets are equipped with lengthwise and crosswise stops.

### ■ TECHNICAL DATA

- Rated holding force: 150 N/cm<sup>2</sup>
- Magnetic field height: approx. 12 mm
- Wear layer of the pole plate: 5 mm



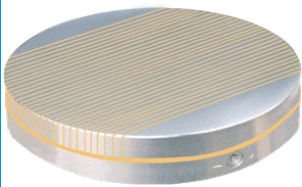
Code No.	A [mm]	B [mm]	C [mm]	D [mm]	Weight [lbs]
243.11-250x150	250	150	56	199	37
243.11-300x150	300	150	56	244	44
243.11-350x150	350	150	56	289	53
243.11-400x200	400	200	59	349	77
243.11-500x200	500	200	59	439	97
243.11-600x200	600	200	59	544	115
243.11-600x300	600	300	62	544	192



## PERMANENT MAGNETIC CIRCULAR CHUCKS

- WITH VERY FINE PARALLEL POLE PITCH P=1.9MM

244.01



### ■ APPLICATION

For chucking small and thin to medium workpieces.

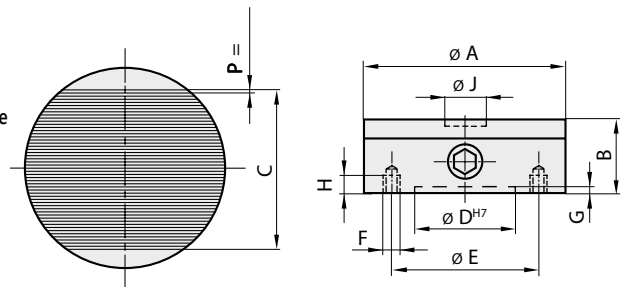
### ■ DESIGN

Powerful magnet system with neodymium magnets and low magnetic field height. Magnetic force continuously adjustable. Available with flange on request (see SAV 248.90 to 248.94). Size J (diameter and depth) machining is possible at the centre of the pole plate. For the other sizes, a 5 mm wearing thickness applies across the entire surface. Concentric lines facilitate visual alignment of the workpieces.

### ■ TECHNICAL DATA

Rated holding force: up to  $\varnothing$  160: 60 N/cm<sup>2</sup>  
from  $\varnothing$  200: 90 N/cm<sup>2</sup>

- Magnetic field height: 8 mm
- Wear thickness of the top surface: 5 mm
- Geometrically balanced: Quality G 6.3



Code No.	A [mm]	B [mm]	C [mm]	D [mm]	E [mm]	F [mm]	G [mm]	H [mm]	J [mm]	Weight [lbs]
244.01-100	100	50	71	60	85	4 x M8	4	10	20x14	7
244.01-130	130	50	99	90	115	4 x M8	4	10	20x14	11
244.01-150	150	50	105	110	132	4 x M8	4	10	24x5	15
244.01-160	160	57	116	125	142	4 x M8	4	16	24x5	20
244.01-200	200	57	153	150	180	4 x M8	4	16	200x5	33
244.01-250	250	57	192	200	232	4 x M8	4	16	250x5	44
244.01-300	300	62	227	250	285	4 x M8	4	16	300x5	68