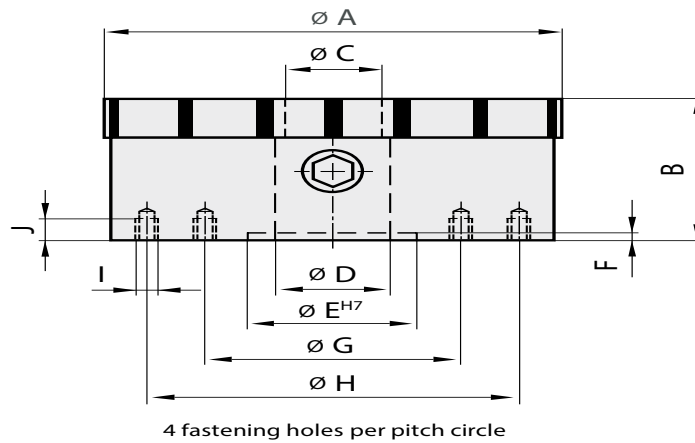


- **APPLICATION**
For round and ring-shaped workpieces.
- **DESIGN**
High magnetic force. Concentric rings allow easy alignment of workpieces. Magnetic field continuously adjustable up to \varnothing 300 mm. Through hole possible up to max. diameter D. Standard version without through hole at the centre. Diameter C is magnetically not active. Available with flange on request (see SAV 248.90 to 248.95). Larger diameters with T-grooves on request. Pole gap with brass pigment.
- **TECHNICAL DATA**
Rated holding force: 80 to 150 N/cm²
- **Wear thickness of the top surface:**
5 mm (for A = 100 to 300 mm)
10 mm (for A = 350 to 400 mm)
- **Geometrically balanced: G 6.3**



Code No.	A [mm]	B [mm]	C [mm]	D [mm]	E [mm]	F [mm]	G [mm]	H [mm]	I [mm]	J [mm]	Poles	Weight [lbs]	Nom. Hold. F.
244.06-100	100	48	14	-	51	6	76	-	M6	8	6	6	80
244.06-130	130	57	16	20	50	5	100	-	M6	10	10	13	90
244.06-150	150	57	20	24	50	5	80	120	M6	8	10	14	90
244.06-200	200	57	28	30	60	5	110	180	M6	8	12	29	115
244.06-250	250	70	30	50	80	5	140	220	M6	8	16	44	135
244.06-300	300	73	40	58	150	6	180	260	M8	10	16	66	150
244.06-350	350	73	40	58	170	6	220	300	M8	12	20	108	150
244.06-400	400	75	40	58	200	8	260	340	M8	12	20	165	150
244.06-500	500	92	60	58	200	8	360	440	M8	12	26	317	150