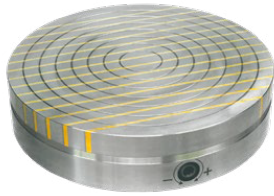


244.11



■ APPLICATION

For chucking small to large workpieces for grinding and turning.

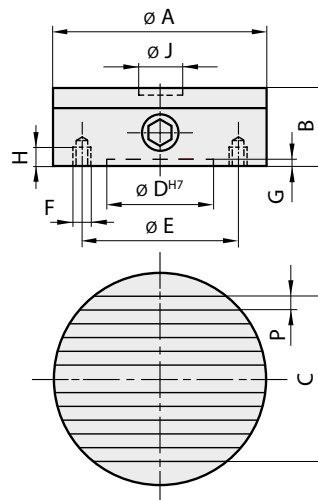
■ DESIGN

Powerful magnet system with neodymium magnets and low magnetic field height. All sizes with 1 con-trol point. Magnetic force continuously adjustable. Option for integrating a central hole "H". Available with flange on request (see SAV 248.90 to 248.94). Concentric rings facilitate visual alignment of the workpieces. Pole gap with solid brass.

■ TECHNICAL DATA

Rated holding force:
Diameter A = 160 and 200 mm: 100 N/cm²
Diameter A = 250 to 500 mm: 150 N/cm²

- Magnetic field height: 10 mm
- Wear layer of the pole plate: 6 mm
- Geometrically balanced: G 6.3



Code No.	A [mm]	B [mm]	C [mm]	D [mm]	E [mm]	F [mm]	G [mm]	H [mm]	J [mm]	P [mm]	Weight [lbs]
244.11-160	160	57	102	125	142	4 x M8	4	12	D15x6	8+3	18
244.11-200	200	57	146	150	180	4 x M8	4	12	D20x6	8+3	29
244.11-250	250	57	198	200	232	4 x M8	4	12	D25x20	12+3	44
244.11-300	300	62	228	250	285	4 x M8	4	12	D25x20	12+3	68
244.11-350	350	62	288	300	334	4 x M8	5	12	D25x20	12+3	95
244.11-400	400	67	318	300	350	6 x M10	5	20	D25x20	12+3	132
244.11-450	450	67	378	350	400	6 x M10	5	20	D25x20	12+3	168